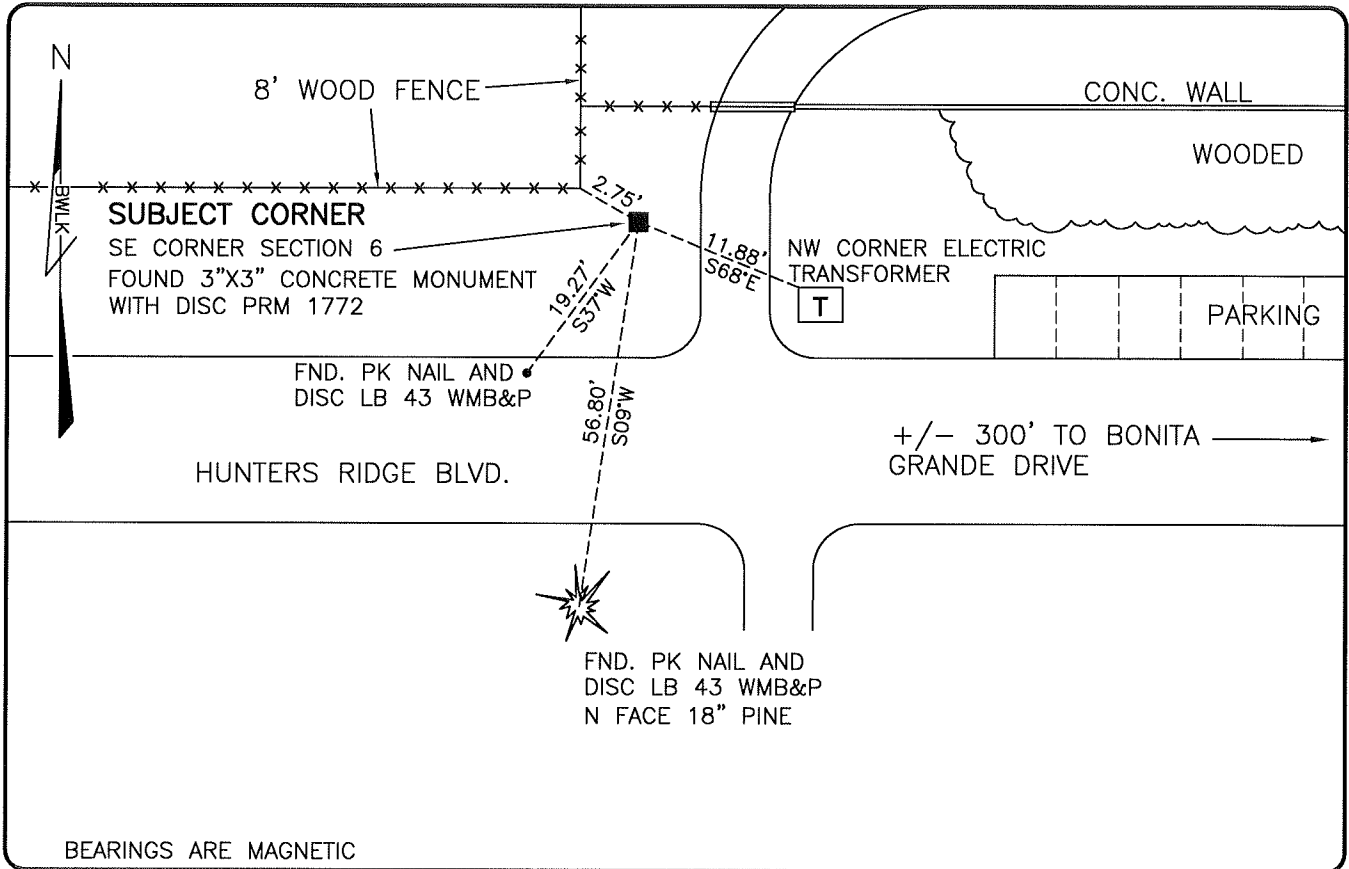


LAND CORNER RECORD

**PUBLIC WORKS
LEE COUNTY, FLORIDA**

Address - 1500 Monroe St., Ft. Myers, Fla. 33901

Phone : (239) 479-8900



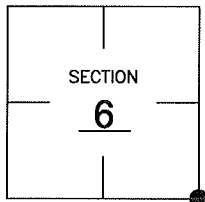
BEARINGS ARE MAGNETIC

COMMENTS:

FOUND SUBJECT CORNER IN HARMONY WITH CCR 81662 AND HISTORICAL RECORDS.

CORNER DESCRIPTION

SE Corner
Section 6
Township 48
Range 26



HORIZONTAL POSITION INFORMATION

Florida West Zone, NAD 1983(2007 Adjustment)

Northing(ft) 720958.93 Easting(ft) 741929.38

Latitude 26°19'00.8392" Longitude 81°44'17.4509"

Scale Factor 0.99995

EXISTING CERTIFIED CORNER RECORDS

Document No.	Date
<u>81662</u>	<u>4-29-04</u>
<u>81633</u>	<u>5-06-04</u>
<u>77449</u>	<u>12-26-01</u>
<u>67675</u>	<u>5-24-00</u>
<u>25040</u>	<u>2-10-87</u>

The above documents are based on FDEP Bureau of Surveying and Mapping Record Information.

I hereby certify the monument and accessories shown above were field located on 1-26-09.

Scott C. Whitaker
SCOTT C. WHITAKER
Professional Surveyor and Mapper
Florida Certificate No. 4324
Date Signed 2-6-09

BEAN, WHITAKER, LUTZ & KAREH, INC. (LB 4919)
13041 McGregor Boulevard
Fort Myers, Florida 33919-5910
Phone: (239) 481-1331

POINT NO. 15034

BLM REFERENCE NO. T48SR26E200600