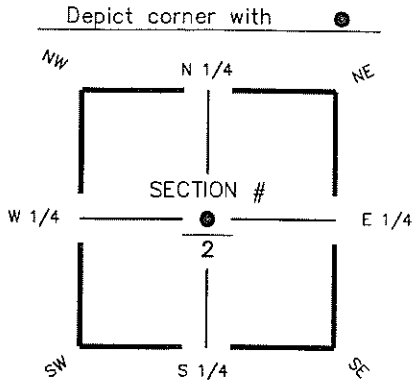


FLORIDA DEPARTMENT OF ENVIRONMENTAL PROTECTION CERTIFIED CORNER RECORD

DOC. # _____

C-19

CORNER DESCRIPTION: MONUMENTATION DESCRIPTION (EVIDENCE FOUND OR METHOD TO SET)

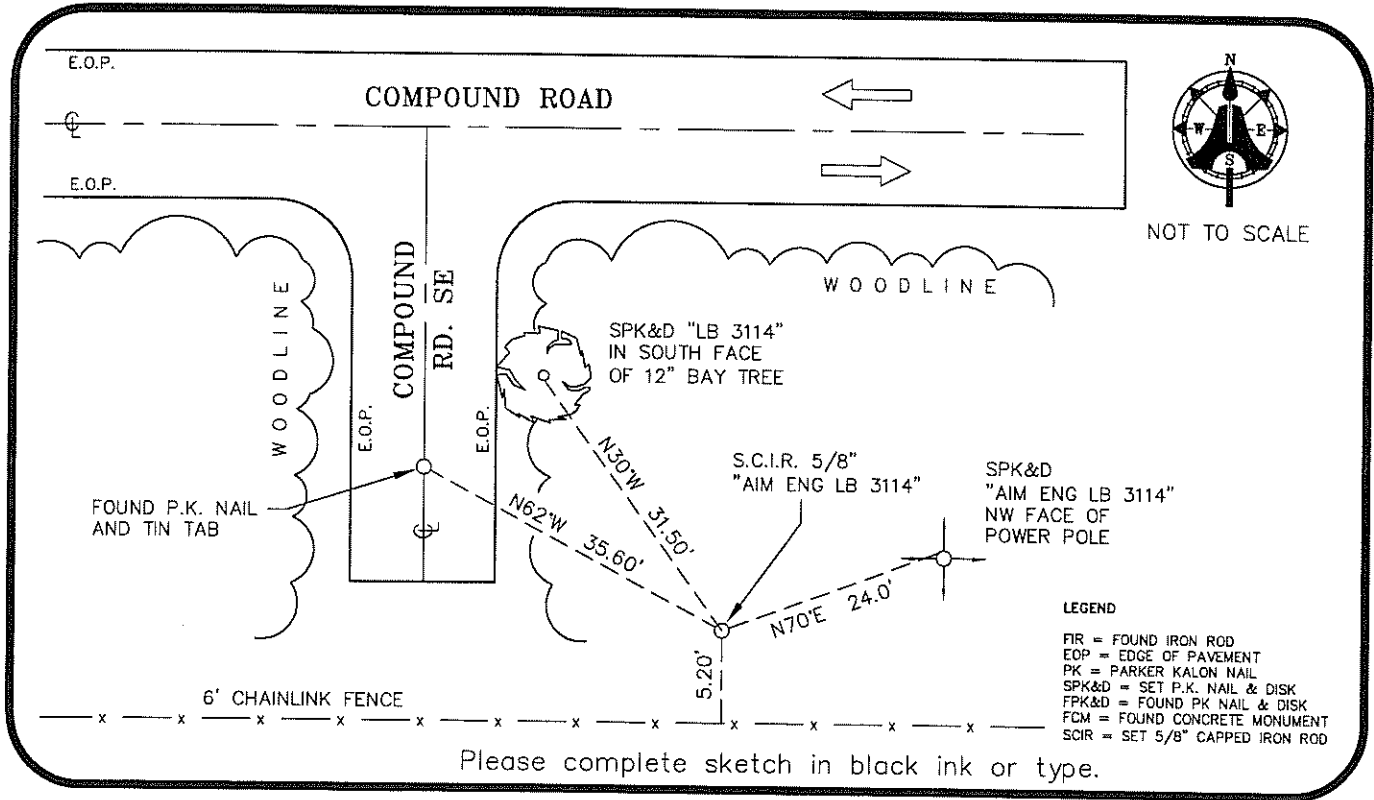


SET 5/8" IRON ROD WITH CAP
"AIM ENG. LB 3114"
USING COORDINATE VALUES
PER CCR DOCUMENT # 084094

HORIZONTAL POSITION INFORMATION (if determined):

Latitude 26° 19' 25.6693" N Longitude 81° 46' 43.1535" W
 Y(NORTHING-Ft.) 723441.11 X(EASTING-Ft.) 728667.54 Zone FL W
 Convergence 00° 05' 53.4" Scale factor 0.99994720
 Coordinate determination (circle one): Field traverse GPS
 Horizontal datum (circle one): NAD27 NAD83(1986) NAD83(1999) other (explain)
 Accuracy (circle one): 1st 2nd 3rd other _____

CENTER corner of Section 2
 Twp 48 S, Rge 25 E
 Tallahassee Base Meridian,
LEE County(s), Florida



SURVEYORS CERTIFICATE:

I certify the monument and accessories indicated above were field located on AUGUST 07, 2008

AIM ENGINEERING & SURVEYING, INC. 5688
SIGNATURE PSM NO.
5300 LEE BOULEVARD LEHIGH ACRES, FLORIDA 33971-1026
FIRM OR AGENCY LB NO.
(239) 332-4569 03-20-09
PHONE NUMBER DATE

SEND ORIGINAL TO:
 Department of Environmental Protection
 Bureau of Surveying and Mapping
 3900 Commonwealth Boulevard
 Mail Station 105
 Tallahassee, Florida 32399

D.E.P. USE ONLY
Processed: _____
B.L.M. - I.D. _____
QUAD - I.D. _____

EMBOSSSED SEAL OVER SIGNATURE