

FLORIDA DEPARTMENT OF ENVIRONMENTAL PROTECTION
CERTIFIED CORNER RECORD

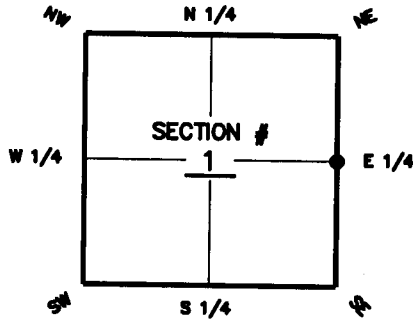
DOC. # 097176

CORNER DESCRIPTION:

MONUMENTATION DESCRIPTION (EVIDENCE FOUND OR METHOD TO SET)

Depict corner with ●

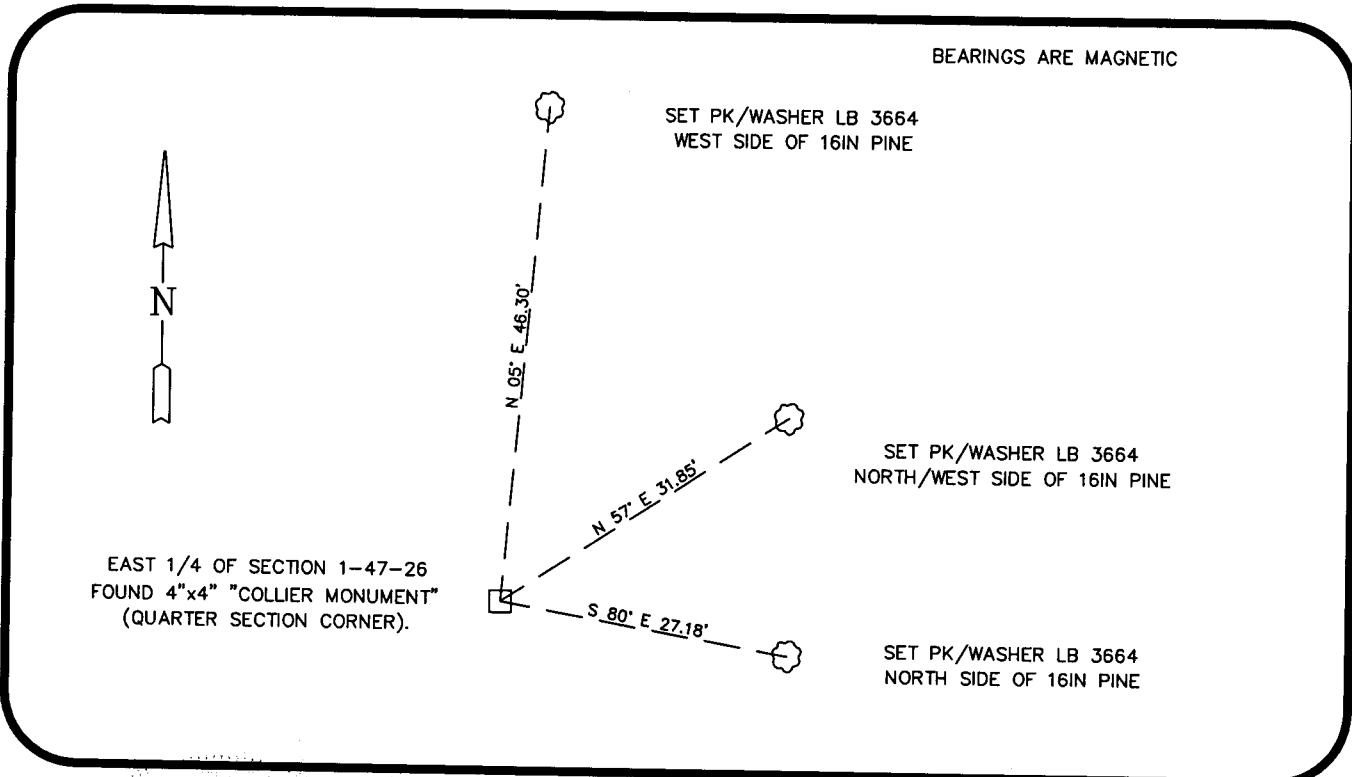
FOUND 4"x4" CONCRETE MONUMENT "COLLIER MONUMENT"



E 1/4 corner of Section 1
Twp 47 S, Rge 26 E
Tallahassee Base Meridian,
Lee County(s), Florida

HORIZONTAL POSITION INFORMATION (if determined):

Latitude 26°24'50.2201" Longitude 81°39'33.5579"
Y(NORTHING-Ft.) 756294.77 X(EASTING-Ft.) 767667.87 Zone FLW
Convergence 0-09-05.5920 Scale factor 0.99995543
Coordinate determination (circle one): Field traverse GPS
Horizontal datum (circle one): NAD27 NAD83(1986) NAD83(1990) other (explain)
Accuracy (circle one): 1st 2nd 3rd other _____



SURVEYORS CERTIFICATE:

I certify the monument and accessories indicated above were field located on 9-30-08

George W. Hackney 5806
SIGNATURE
Agnoll, Barber & Brundage 3664
FIRM OR AGENCY
7400 Tamiami Tr. N., Suite 200
ADDRESS
Naples FL 34108
GTY STATE ZIP
(239) 597-3111 10-1-08
PHONE NUMBER DATE

SEND ORIGINAL TO:
Department of Environmental Protection
Bureau of Surveying and Mapping
3600 Commonwealth Boulevard
Mail Station 105
Tallahassee, Florida 32399

NO. OF STATE OF D.E.P. USE ONLY
Processed: 05-03-09 JH
B.L.M. - I.D. 700640
QUAD - I.D. 2014 CORKSCREW NW

EMBOSSSED SEAL OVER SIGNATURE