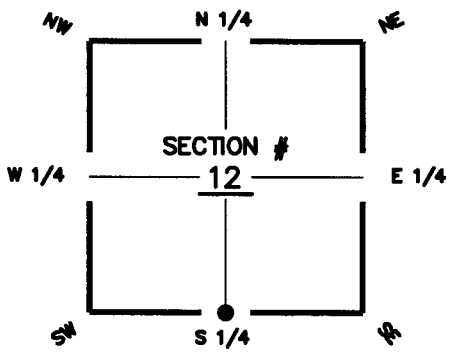


**CORNER DESCRIPTION:**

**MONUMENTATION DESCRIPTION (EVIDENCE FOUND OR METHOD TO SET)**

Depict corner with

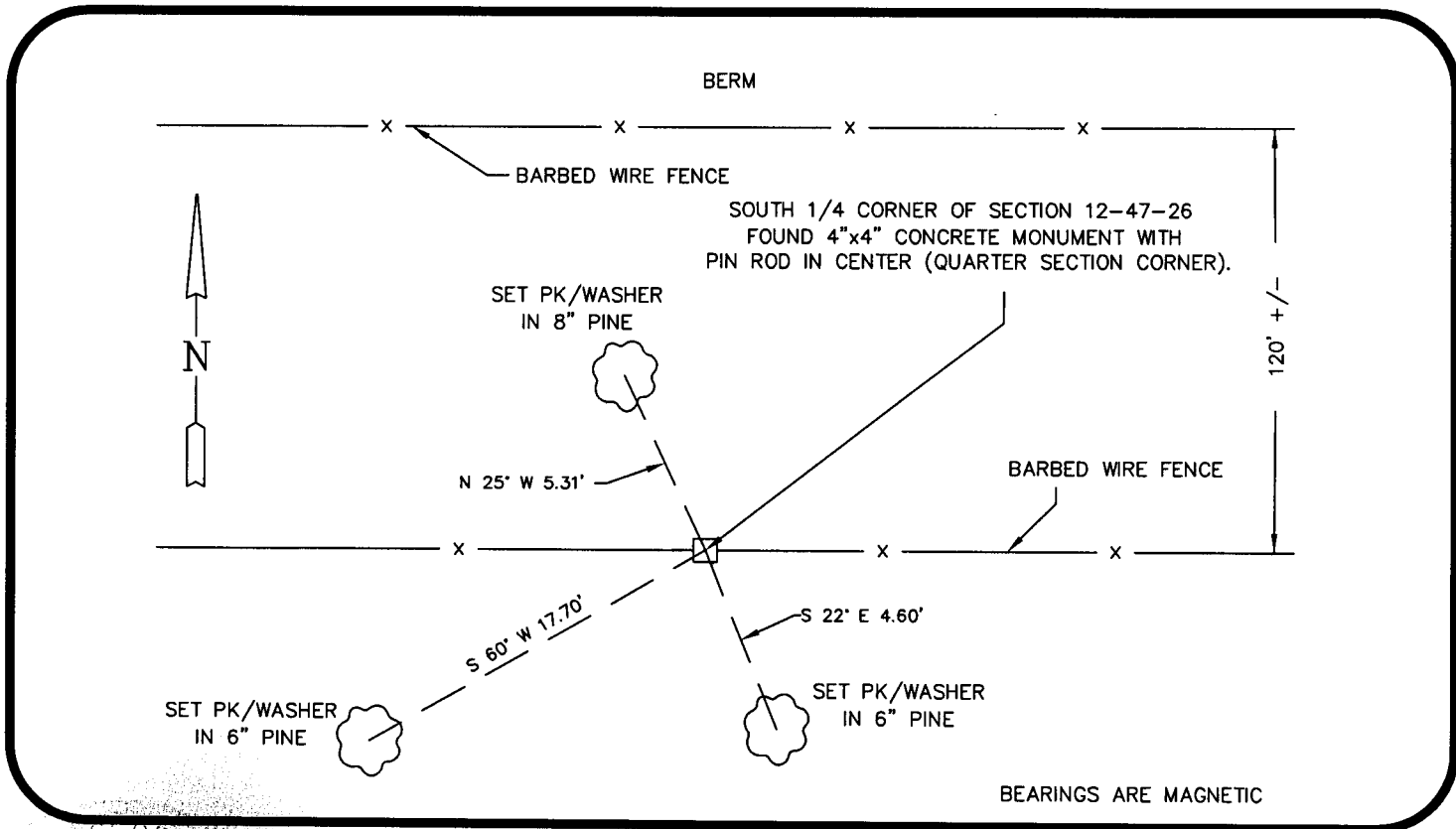
FOUND 4"x4" CONCRETE MONUMENT WITH PIN ROD IN CENTER



**SQ** corner of Section 12  
Twp 47 S, Rge 26 E  
Tallahassee Base Meridian,  
Lee County(s), Florida

**HORIZONTAL POSITION INFORMATION ( if determined ):**

Latitude 26°23'29.8501" Longitude 81°40'02.0367"  
Y(NORTHING-Ft.) 748173.32 X(EASTING-Ft.) 765099.68 Zone FLW  
Convergence 0-08-52.5046 Scale factor 0.9999548  
Coordinate determination (circle one): Field traverse  **GPS**  
Horizontal datum (circle one): NAD27 NAD83(1986)  **NAD83(1990)** other (explain)  
Accuracy (circle one): 1st 2nd 3rd other \_\_\_\_\_



**SURVEYOR'S CERTIFICATE:**

I certify the monument and accessories indicated above were field located on 9-30-08

George W. Hackney 5608  
SIGNATURE  
Agnoll, Barber & Brundage 3664  
FIRM OR AGENCY  
7400 Tamiami Tr. N., Suite 200  
ADDRESS  
Naples FL. 34108  
CITY STATE ZIP  
(239) 597-3111 10-1-08  
PHONE NUMBER DATE

SEND ORIGINAL TO:  
Department of Environmental Protection  
Bureau of Surveying and Mapping  
3900 Commonwealth Boulevard  
Mail Station 105  
Tallahassee, Florida 32399

D.E.P. USE ONLY  
Processed: 05-05-09 JH  
B.L.M. - I.D. 640500  
QUAD - I.D. 2014 CORKSCREW NW

EMBOSSSED SEAL OVER SIGNATURE