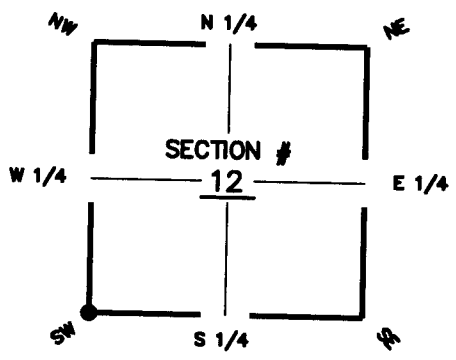


**CORNER DESCRIPTION:**

Depict corner with 



SW corner of Section 12  
Twp 47 S, Rge 26 E  
Tallahassee Base Meridian,  
Lee County(s), Florida

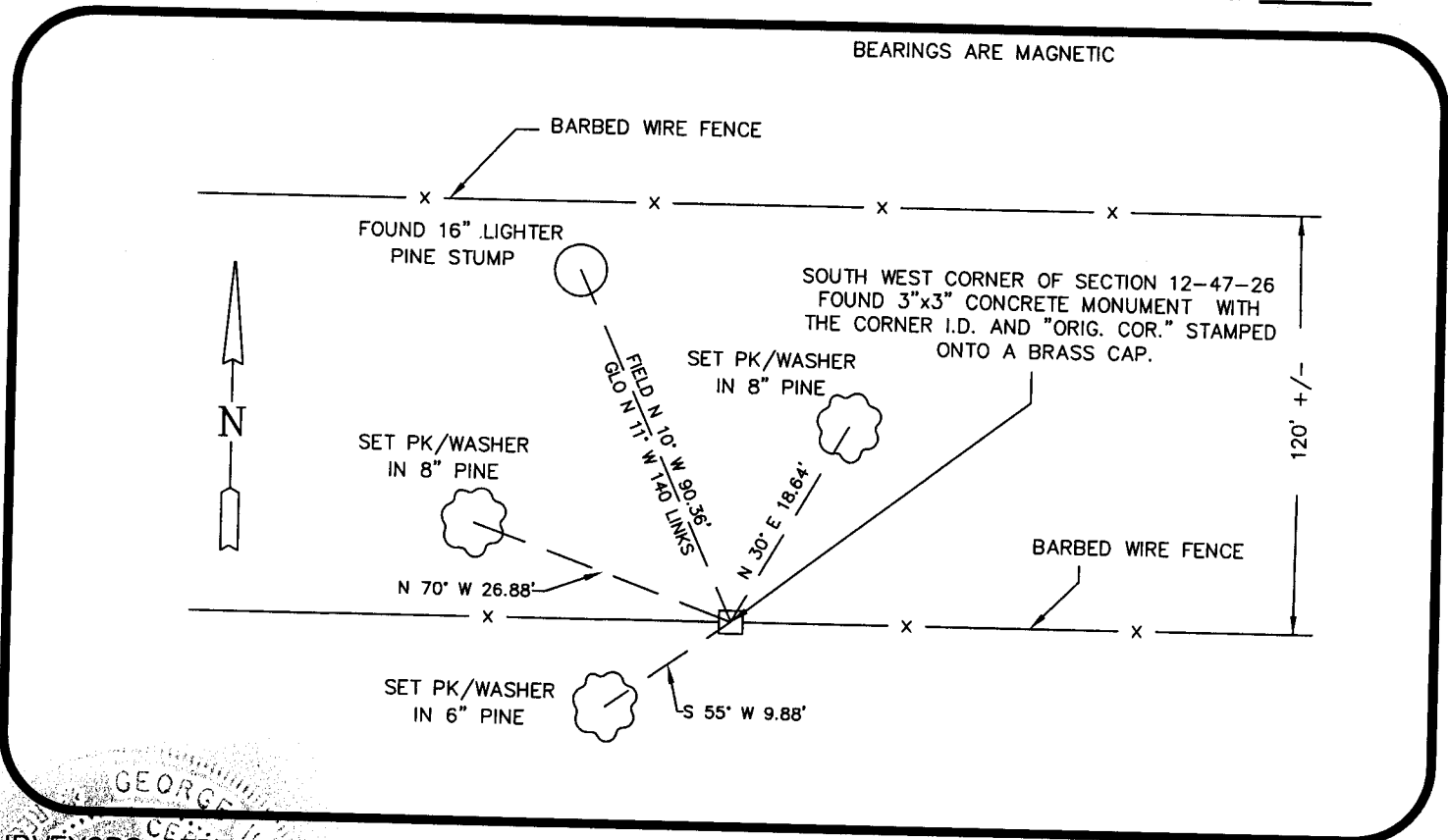
**MONUMENTATION DESCRIPTION (EVIDENCE FOUND OR METHOD TO SET)**

FOUND 3"x3" CONCRETE MONUMENT WITH THE CORNER I.D. AND "ORIG. COR." STAMPED ONTO A BRASS CAP.

**HORIZONTAL POSITION INFORMATION ( if determined ):**

Latitude 26°23'29.2777" Longitude 81°40'31.7037"  
Y(NORTHING-Ft.) 748108.65 X(EASTING-Ft.) 762402.13 Zone FLW  
Convergence 0-08-39.3143 Scale factor 0.9999541  
Coordinate determination (circle one): Field traverse  GPS  
Horizontal datum (circle one): NAD27 NAD83(1986)  NAD83(1990) other (explain)  
Accuracy (circle one): 1st 2nd 3rd other

BEARINGS ARE MAGNETIC



**SURVEYORS CERTIFICATE:**

I certify the monument and accessories indicated above were field located on 9-30-08

*George W. Hackney*  
George W. Hackney 5806  
Agnoli, Barber & Brundage P.M. NO. 3664  
7400 Tamiami Tr. N., Suite 200 L.B. NO.  
Naples ADDRESS FL 34108  
CITY STATE ZIP  
(239) 597-3111 PHONE NUMBER DATE 10-1-08

SEND ORIGINAL TO:  
Department of Environmental Protection  
Bureau of Surveying and Mapping  
3900 Commonwealth Boulevard  
Mail Station 105  
Tallahassee, Florida 32399

Processed: 05-05-09 JH D.E.P. USE ONLY  
B.L.M. - I.D. W00500  
QUAD - I.D. 2014 CORKSCREW NW

EMBOSSSED SEAL OVER SIGNATURE