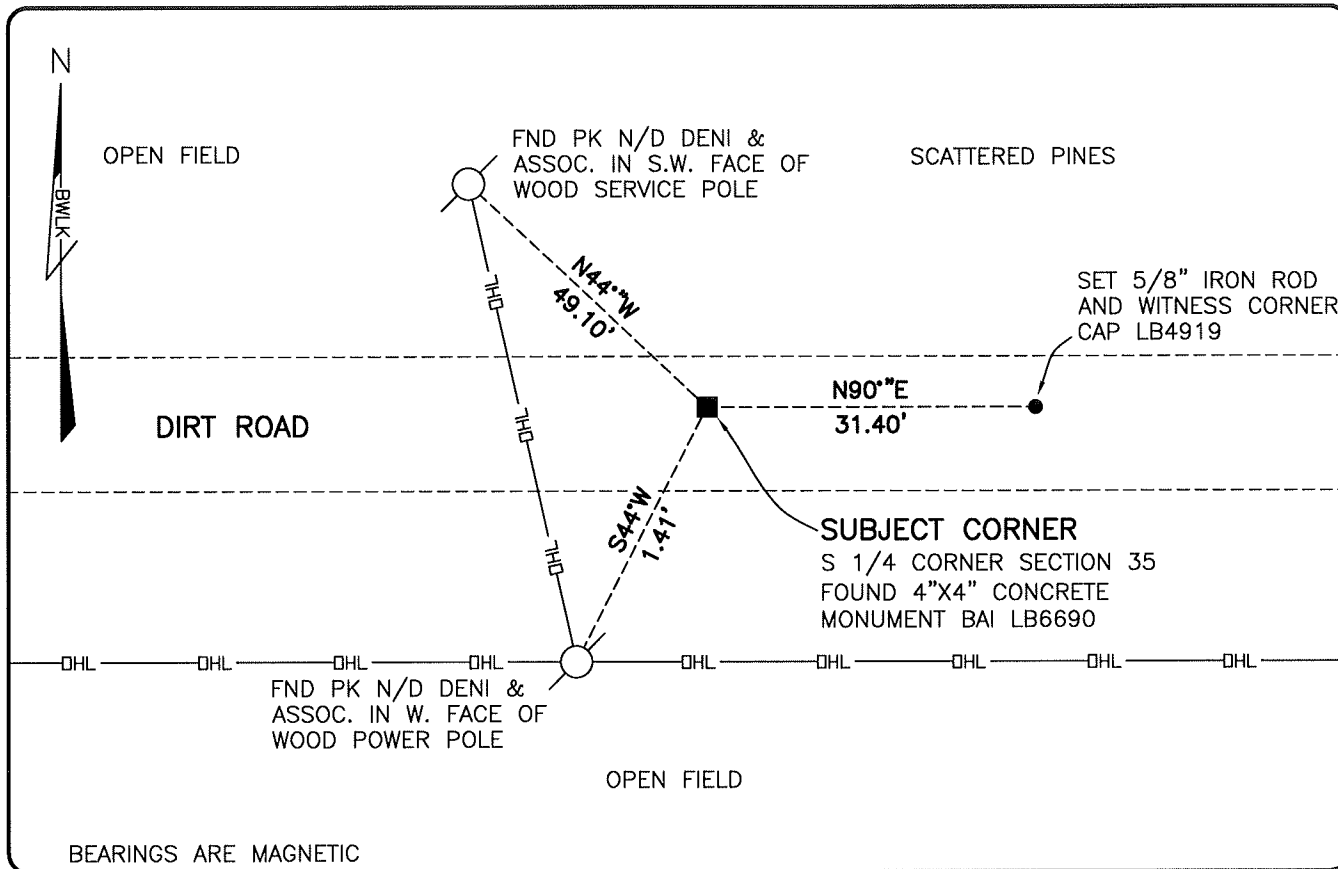


LAND CORNER RECORD

**PUBLIC WORKS
LEE COUNTY, FLORIDA**

Address - 1500 Monroe St., Ft. Myers, Fla. 33901

Phone : (239) 479-8900

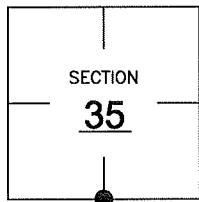


COMMENTS:

FOUND SUBJECT CORNER IN HARMONY WITH HISTORICAL RECORDS. APPEARS TO HAVE BEEN ORIGINALLY SET BY JOHN AMEY IN 1961 AND PERPETUATED SINCE THAT TIME. THIS CORNER WAS NOT SURVEYED BY THE GLO.

CORNER DESCRIPTION

S 1/4 Corner
Section 35
Township 47
Range 26



HORIZONTAL POSITION INFORMATION

Florida West Zone, NAD 1983(2007 Adjustment)
Northing(ft) 726549.27 Easting(ft) 760223.70
Latitude 26°19'55.8015" Longitude 81°40'56.2440"
Scale Factor 0.99995

EXISTING CERTIFIED CORNER RECORDS

Document No.	Date
<u>69240</u>	<u>10-3-00</u>
_____	_____
_____	_____
_____	_____
_____	_____

The above documents are based on FDEP Bureau of Surveying and Mapping Record Information.

I hereby certify the monument and accessories shown above were field located on 1-7-09.

Scott C. Whitaker
SCOTT C. WHITAKER
 Professional Surveyor and Mapper
 Florida Certificate No. 4324
 Date Signed 3/6/09

BEAN, WHITAKER, LUTZ & KAREH, INC. (LB 4919)
 13041 McGregor Boulevard
 Fort Myers, Florida 33919-5910
 Phone: (239) 481-1331

POINT NO. 15003

BLM REFERENCE NO. T47SR26E540100