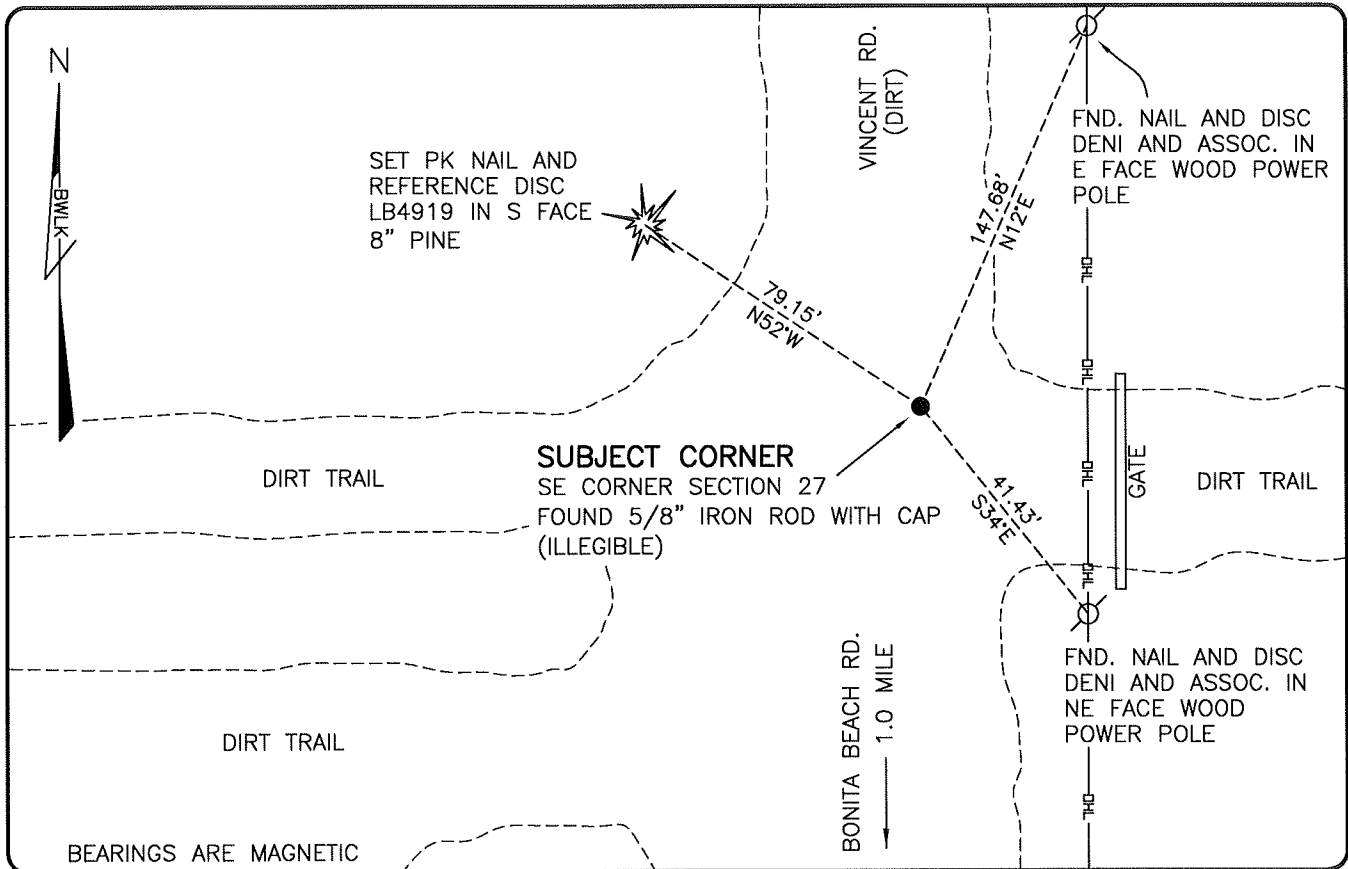


LAND CORNER RECORD

**PUBLIC WORKS
LEE COUNTY, FLORIDA**

Address - 1500 Monroe St., Ft. Myers, Fla. 33901

Phone : (239) 479-8900

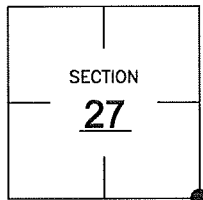


COMMENTS:

FOUND SUBJECT CORNER IN HARMONY WITH HISTORICAL RECORDS. APPEARS TO HAVE BEEN ORIGINALLY SET BY JOHN AMEY IN 1961 AND PERPETUATED SINCE THAT TIME. THIS CORNER WAS NOT SURVEYED BY THE GLO.

CORNER DESCRIPTION

SE Corner
Section 27
Township 47
Range 26



HORIZONTAL POSITION INFORMATION

Florida West Zone, NAD 1983(2007 Adjustment)

Northing(ft) 731864.25 Easting(ft) 757455.52

Latitude 26°20'48.5093" Longitude 81°41'26.5305"

Scale Factor 0.99995

EXISTING CERTIFIED CORNER RECORDS

Document No.	Date
<u>69223</u>	<u>9-28-00</u>
<u>40099</u>	<u>8-23-91</u>

The above documents are based on FDEP Bureau of Surveying and Mapping Record Information.

I hereby certify the monument and accessories shown above were field located on 1-15-09.

Scott C. Whitaker
SCOTT C. WHITAKER
Professional Surveyor and Mapper
Florida Certificate No. 4324
Date Signed 2/6/09

BEAN, WHITAKER, LUTZ & KAREH, INC. (LB 4919)
13041 McGregor Boulevard
Fort Myers, Florida 33919-5910
Phone: (239) 481-1331

POINT NO. 15021

BLM REFERENCE NO. T47SR26E500200