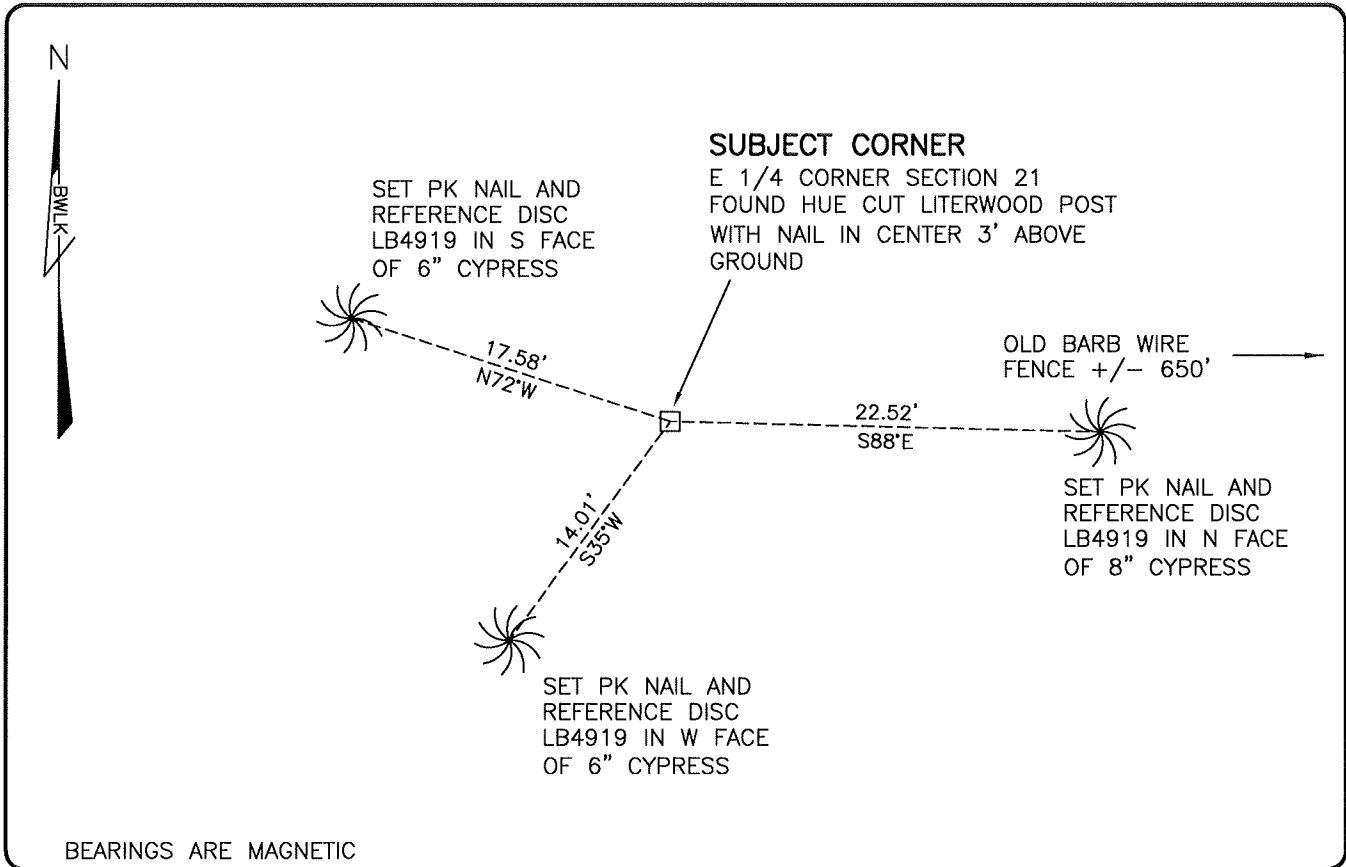


LAND CORNER RECORD

**PUBLIC WORKS
LEE COUNTY, FLORIDA**

Address - 1500 Monroe St., Ft. Myers, Fla. 33901

Phone : (239) 479-8900

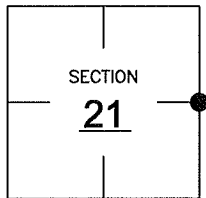


COMMENTS:

FOUND SUBJECT CORNER IN HARMONY WITH HISTORICAL RECORDS. APPEARS TO HAVE BEEN SET BY JOHN AMEY MAY 1961. THIS CORNER WAS NOT SURVEYED BY THE GLO.

CORNER DESCRIPTION

E1/4 Corner
Section 21
Township 47
Range 26



HORIZONTAL POSITION INFORMATION

Florida West Zone, NAD 1983(2007 Adjustment)

Northing(ft) 739757.36 Easting(ft) 751919.64

Latitude 26°22'06.8128" Longitude 81°42'27.1892"

Scale Factor 0.99995

EXISTING CERTIFIED CORNER RECORDS

| Document No. | Date |
|--------------|------|
| | |
| | |
| | |
| | |
| | |

The above documents are based on FDEP Bureau of Surveying and Mapping Record Information.

I hereby certify the monument and accessories shown above were field located on 1-29-09.

Scott C. Whitaker
SCOTT C. WHITAKER
Professional Surveyor and Mapper
Florida Certificate No. 4324
Date Signed 2-6-09

BEAN, WHITAKER, LUTZ & KAREH, INC. (LB 4919)
13041 McGregor Boulevard
Fort Myers, Florida 33919-5910
Phone: (239) 481-1331

POINT NO. 15008

BLM REFERENCE NO. T47SR26E400340