

CERTIFIED CORNER RECORD

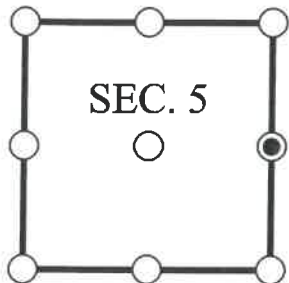
DOC. # _____

E 1/4 Corner of Section 5, Township 47, Range 26, LEE County

- GLO CORNER (PROVEN)
 LAND GRANT CORNER
 HISTORIC CORNER
 OTHER CORNER

CORNER DESCRIPTION: MONUMENT DESCRIPTION (EVIDENCE FOUND OR METHOD USED TO SET)

Depict corner with



FOUND 4"X4" CONCRETE POST WITH DISK STAMPED JOHNSON ENGINEERING, INC. LB 642, CONSISTENT WITH 1/4 SECTION MONUMENT SHOWN ON A SURVEY OF SECTION 5 PREPARED BY JOHNSON ENGINEERING, INC. DATED 8/15/2003.

HORIZONTAL POSITION INFORMATION (if determined):

Latitude: N26° 24' 46.6061" Longitude: W81° 43' 27.9939"

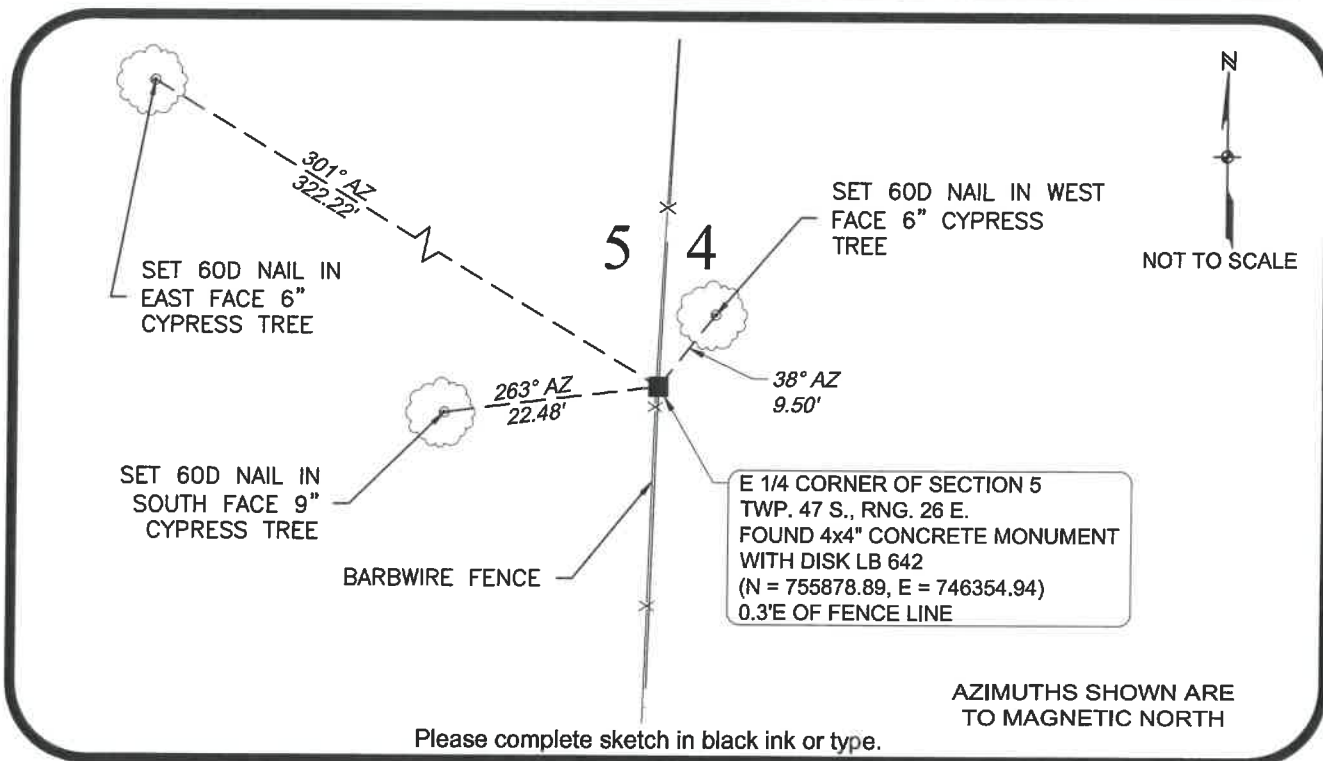
Y(NORTHING-Ft.) 755878.891 X(EASTING-Ft.) 746354.940 Zone FL West

Horizontal datum: NAD83(2011)

Source: _____

Determined by: GPS (VRS)

- EXISTING
 OBLITERATED
 LOST



SURVEYORS CERTIFICATE:

I certify the monument and accessories indicated above were field located on 10/05/2017


 SIGNATURE _____ 4912
 Johnson Engineering, Inc. PSM NO. 642
 FIRM OR AGENCY LB NO. _____
 2122 Johnson Street
 ADDRESS
 Fort Myers Florida 33901
 CITY STATE ZIP
 866-367-4400
 PHONE NUMBER DATE

SEND ORIGINAL TO:
 Department of Environmental Protection
 Bureau of Surveying and Mapping
 3900 Commonwealth Boulevard
 Mail Station 105
 Tallahassee, Florida 32399

NOTE: Do not make changes to this form

D.E.P. USE ONLY

Processed: _____

B.L.M. - I.D. _____

QUAD - I.D. _____

EMBOSSSED SEAL OVER SIGNATURE

CERTIFIED CORNER RECORD

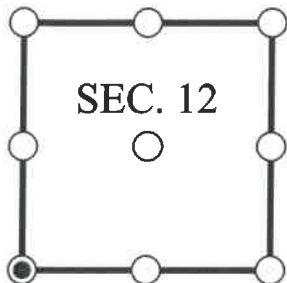
DOC. # _____

SW Corner of Section 12, Township 47, Range 25, LEE County

- GLO CORNER (PROVEN)
 LAND GRANT CORNER
 HISTORIC CORNER
 OTHER CORNER

CORNER DESCRIPTION: MONUMENT DESCRIPTION (EVIDENCE FOUND OR METHOD USED TO SET)

Depict corner with



FOUND 4x4" CONCRETE MONUMENT POST WITH STAMPED DISK CONSISTENT WITH CORNER RECORD 081746, STAMPED FDOT 11/12-14/13.

HORIZONTAL POSITION INFORMATION (if determined):

Latitude: N26° 23' 21.2646" Longitude: W81° 46' 18.3707"

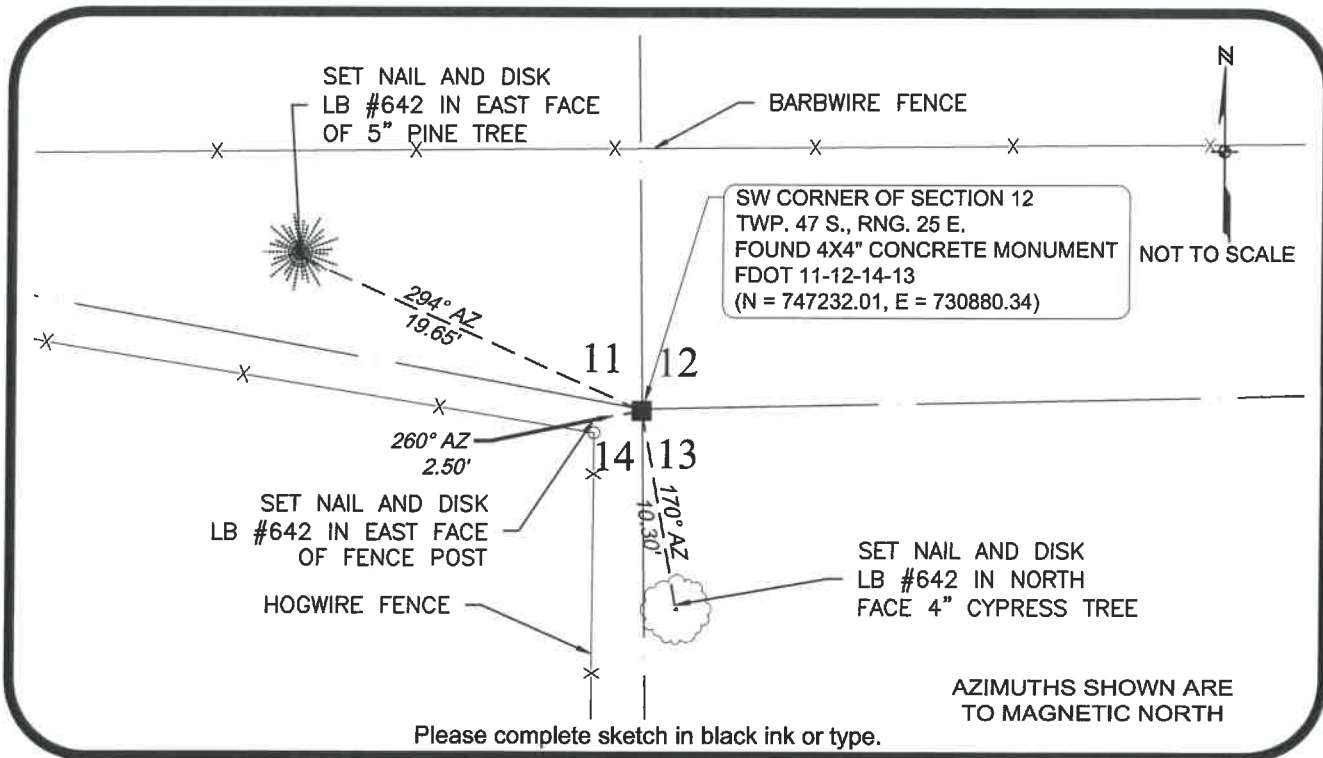
Y(NORTHING-Ft.) 747232.006 X(EASTING-Ft.) 730880.335 Zone FL West

Horizontal datum: NAD83(2011)

Source: _____

Determined by: GPS (VRS)

- EXISTING
 OBLITERATED
 LOST



SURVEYORS CERTIFICATE:

I certify the monument and accessories indicated above were field located on 10/07/2017

 SIGNATURE 4912 PSM NO.
 Johnson Engineering, Inc. 642
 FIRM OR AGENCY LB NO.
 2122 Johnson Street
 ADDRESS
 Fort Myers Florida 33901
 CITY STATE ZIP
 866-367-4400
 PHONE NUMBER DATE

EMBOSSSED SEAL OVER SIGNATURE

SEND ORIGINAL TO:
 Department of Environmental Protection
 Bureau of Surveying and Mapping
 3900 Commonwealth Boulevard
 Mail Station 105
 Tallahassee, Florida 32399

NOTE: Do not make changes to this form

D.E.P. USE ONLY	
Processed:	_____
B.L.M. - I.D.	_____
QUAD - I.D.	_____

CERTIFIED CORNER RECORD

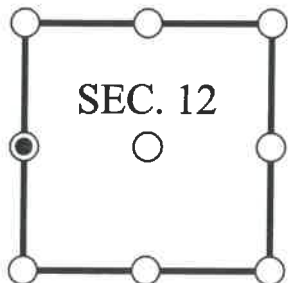
DOC. # _____

W 1/4 Corner of Section 12, Township 47, Range 25, LEE County

- GLO CORNER (PROVEN)
 LAND GRANT CORNER
 HISTORIC CORNER
 OTHER CORNER

CORNER DESCRIPTION: MONUMENT DESCRIPTION (EVIDENCE FOUND OR METHOD USED TO SET)

Depict corner with



FOUND 4x4" CONCRETE MONUMENT POST WITH STAMPED DISK CONSISTENT WITH CORNER RECORD 081744, STAMPED DENI LS3950 11/12.

HORIZONTAL POSITION INFORMATION (if determined):

Latitude: N26° 23' 51.1524" Longitude: W81° 46' 18.8480"

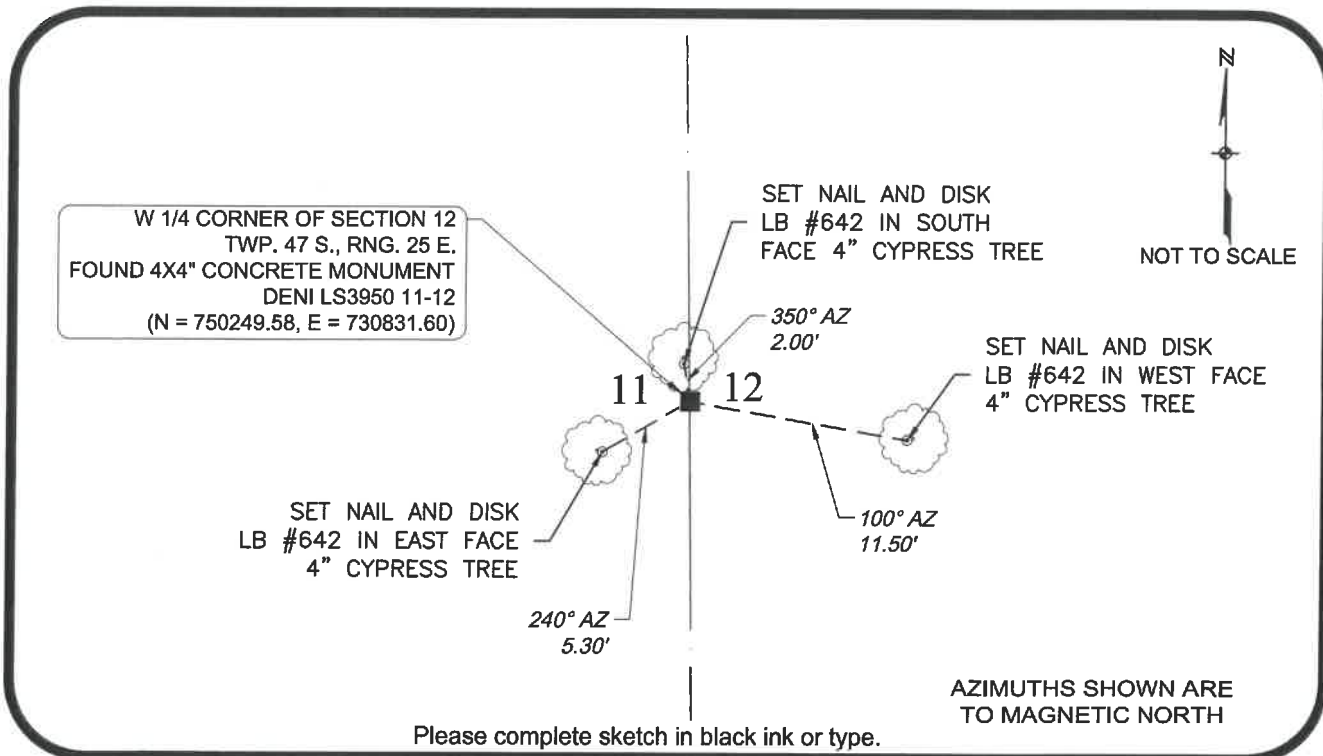
Y(NORTHING-Ft.) 750249.579 X(EASTING-Ft.) 730831.597 Zone FL West

Horizontal datum: NAD83(2011)

Source: _____

Determined by: GPS (VRS)

- EXISTING
 OBLITERATED
 LOST



SURVEYORS CERTIFICATE:

I certify the monument and accessories indicated above were field located on 10/07/2017

SIGNATURE _____ 4912
 Johnson Engineering, Inc. PSM NO. 642
 FIRM OR AGENCY LB NO. _____
 2122 Johnson Street
 ADDRESS
 Fort Myers Florida 33901
 CITY STATE ZIP
 866-367-4400
 PHONE NUMBER DATE

SEND ORIGINAL TO:
 Department of Environmental Protection
 Bureau of Surveying and Mapping
 3900 Commonwealth Boulevard
 Mail Station 105
 Tallahassee, Florida 32399

NOTE: Do not make changes to this form

D.E.P. USE ONLY

Processed: _____

B.L.M. - I.D. _____

QUAD - I.D. _____

EMBOSSSED SEAL OVER SIGNATURE

CERTIFIED CORNER RECORD

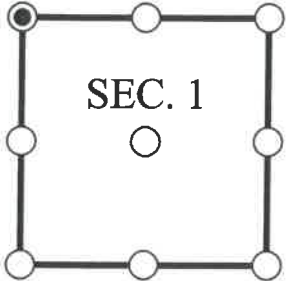
DOC. # _____

NW Corner of Section 1, Township 47, Range 25, LEE County

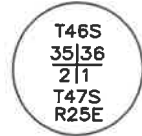
- GLO CORNER (PROVEN)
 LAND GRANT CORNER
 HISTORIC CORNER
 OTHER CORNER

CORNER DESCRIPTION: MONUMENT DESCRIPTION (EVIDENCE FOUND OR METHOD USED TO SET)

Depict corner with



FOUND 4x4" CONCRETE MONUMENT POST WITH STAMPED DISK CONSISTENT WITH CORNER RECORD 079091, STAMPED AS SHOWN.



HORIZONTAL POSITION INFORMATION (if determined):

Latitude: N26° 25' 13.8571" Longitude: W81° 46' 20.4735"

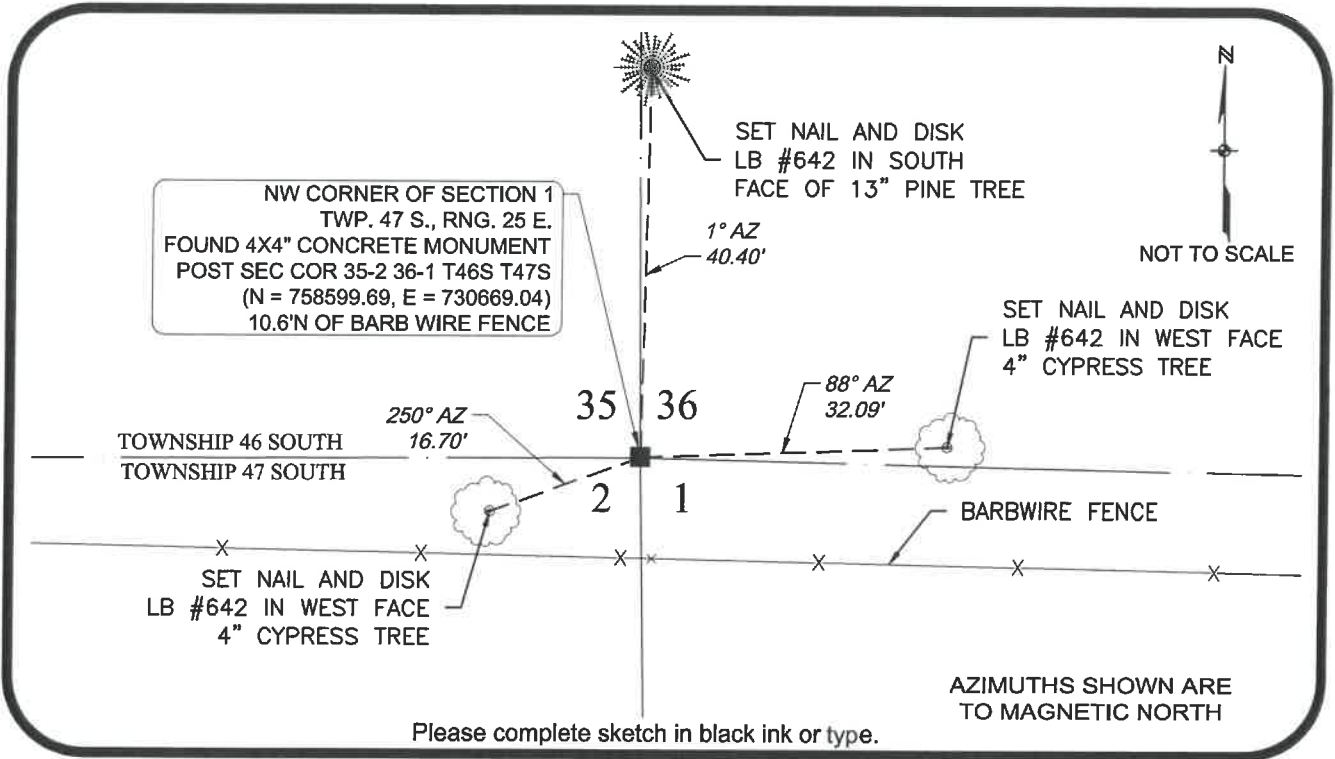
Y(NORTHING-Ft.) 758599.687 X(EASTING-Ft.) 730669.036 Zone FL West

Horizontal datum: NAD83(2011)

Source: _____

Determined by: GPS (VRS)

- EXISTING
 OBLITERATED
 LOST



SURVEYORS CERTIFICATE:

I certify the monument and accessories indicated above were field located on 10/06/2017

SIGNATURE _____ 4912 PSM NO.
 Johnson Engineering, Inc. 642
 FIRM OR AGENCY LB NO.
 2122 Johnson Street
 ADDRESS
 Fort Myers Florida 33901
 CITY STATE ZIP
 866-367-4400
 PHONE NUMBER DATE

SEND ORIGINAL TO:
 Department of Environmental Protection
 Bureau of Surveying and Mapping
 3900 Commonwealth Boulevard
 Mail Station 105
 Tallahassee, Florida 32399

NOTE: Do not make changes to this form

D.E.P. USE ONLY

Processed: _____

B.L.M. - I.D. _____

QUAD - I.D. _____

EMBOSSSED SEAL OVER SIGNATURE

CERTIFIED CORNER RECORD

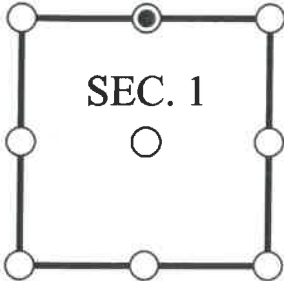
DOC. # _____

N 1/4 Corner of Section 1, Township 47, Range 25, LEE County

- GLO CORNER (PROVEN)
 LAND GRANT CORNER
 HISTORIC CORNER
 OTHER CORNER

CORNER DESCRIPTION: MONUMENT DESCRIPTION (EVIDENCE FOUND OR METHOD USED TO SET)

Depict corner with



FOUND 4x4" CONCRETE MONUMENT POST WITH DISK CONSISTENT WITH CORNER RECORD 081647, STAMPED AS SHOWN.



HORIZONTAL POSITION INFORMATION (if determined):

Latitude: N26° 25' 13.1993" Longitude: W81° 45' 51.5339"

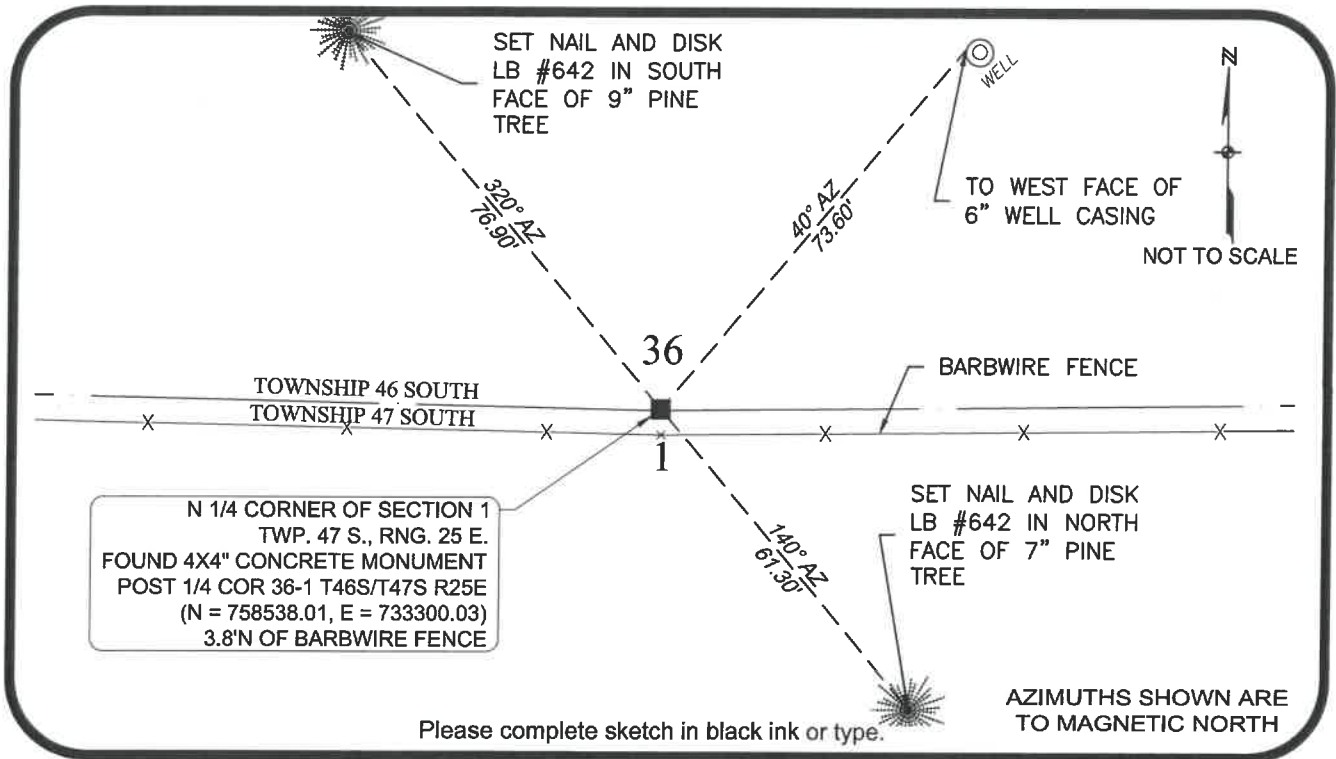
Y(NORTHING-Ft.) 758538.007 X(EASTING-Ft.) 733300.033 Zone FL West

- EXISTING
 OBLITERATED
 LOST

Horizontal datum: NAD83(2011)

Source: _____

Determined by: GPS (VRS)



SURVEYORS CERTIFICATE:

I certify the monument and accessories indicated above were field located on 10/06/2017

SIGNATURE _____ 4912 PSM NO.
 Johnson Engineering, Inc. 642
 FIRM OR AGENCY LB NO.
 2122 Johnson Street
 ADDRESS
 Fort Myers Florida 33901
 CITY STATE ZIP
 866-367-4400
 PHONE NUMBER DATE

SEND ORIGINAL TO:
 Department of Environmental Protection
 Bureau of Surveying and Mapping
 3900 Commonwealth Boulevard
 Mail Station 105
 Tallahassee, Florida 32399

NOTE: Do not make changes to this form

D.E.P. USE ONLY	
Processed: _____	_____
B.L.M. - I.D. _____	_____
QUAD - I.D. _____	_____

EMBOSSSED SEAL OVER SIGNATURE

CERTIFIED CORNER RECORD

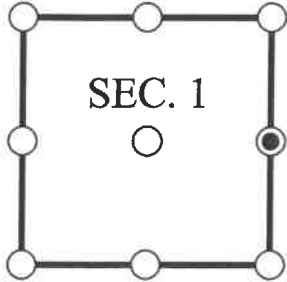
DOC. # _____

E 1/4 Corner of Section 1, Township 47, Range 25, LEE County

- GLO CORNER (PROVEN)
 LAND GRANT CORNER
 HISTORIC CORNER
 OTHER CORNER

CORNER DESCRIPTION: MONUMENT DESCRIPTION (EVIDENCE FOUND OR METHOD USED TO SET)

Depict corner with



FOUND 4x4" CONCRETE MONUMENT POST WITH BROKEN TOP, LOCATION CONSISTENT WITH CORNER RECORD 081649.

HORIZONTAL POSITION INFORMATION (if determined):

Latitude: N26° 24' 47.2760" Longitude: W81° 45' 21.9058"

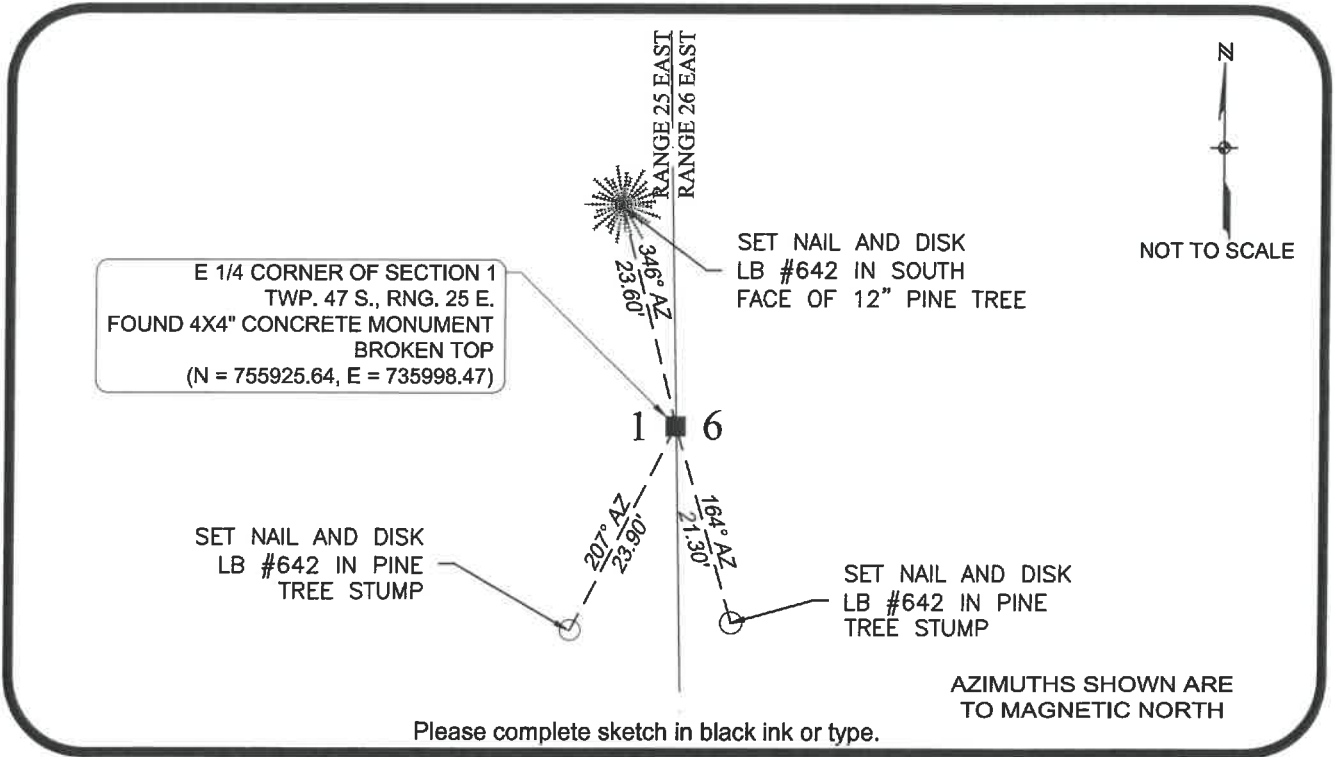
Y(NORTHING-Ft.) 755925.643 X(EASTING-Ft.) 735998.467 Zone FL West

Horizontal datum: NAD83(2011)

Source: _____

Determined by: GPS (VRS)

- EXISTING
 OBLITERATED
 LOST



SURVEYORS CERTIFICATE:

I certify the monument and accessories indicated above were field located on 10/05/2017

SIGNATURE _____ PSM NO. 4912
 Johnson Engineering, Inc. _____ FIRM OR AGENCY PSM NO. 642
 2122 Johnson Street _____ ADDRESS LB NO. _____
 Fort Myers _____ Florida _____ 33901 CITY STATE ZIP
 866-367-4400 _____ PHONE NUMBER DATE _____

SEND ORIGINAL TO:
 Department of Environmental Protection
 Bureau of Surveying and Mapping
 3900 Commonwealth Boulevard
 Mail Station 105
 Tallahassee, Florida 32399

NOTE: Do not make changes to this form

D.E.P. USE ONLY

Processed: _____

B.L.M. - I.D. _____

QUAD - I.D. _____

EMBOSSSED SEAL OVER SIGNATURE

CERTIFIED CORNER RECORD

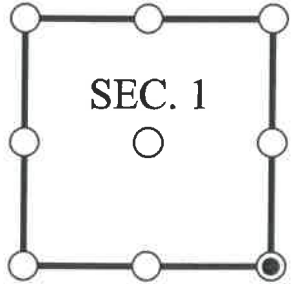
DOC. # _____

SE Corner of Section 1, Township 47, Range 25, LEE County

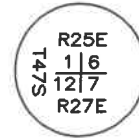
- GLO CORNER (PROVEN)
 LAND GRANT CORNER
 HISTORIC CORNER
 OTHER CORNER

CORNER DESCRIPTION: MONUMENT DESCRIPTION (EVIDENCE FOUND OR METHOD USED TO SET)

Depict corner with



FOUND 4x4" CONCRETE MONUMENT POST WITH STAMPED DISK CONSISTENT WITH CORNER RECORD 081650, STAMPED AS SHOWN.



HORIZONTAL POSITION INFORMATION (if determined):

Latitude: N26° 24' 21.0991" Longitude: W81° 45' 21.3323"

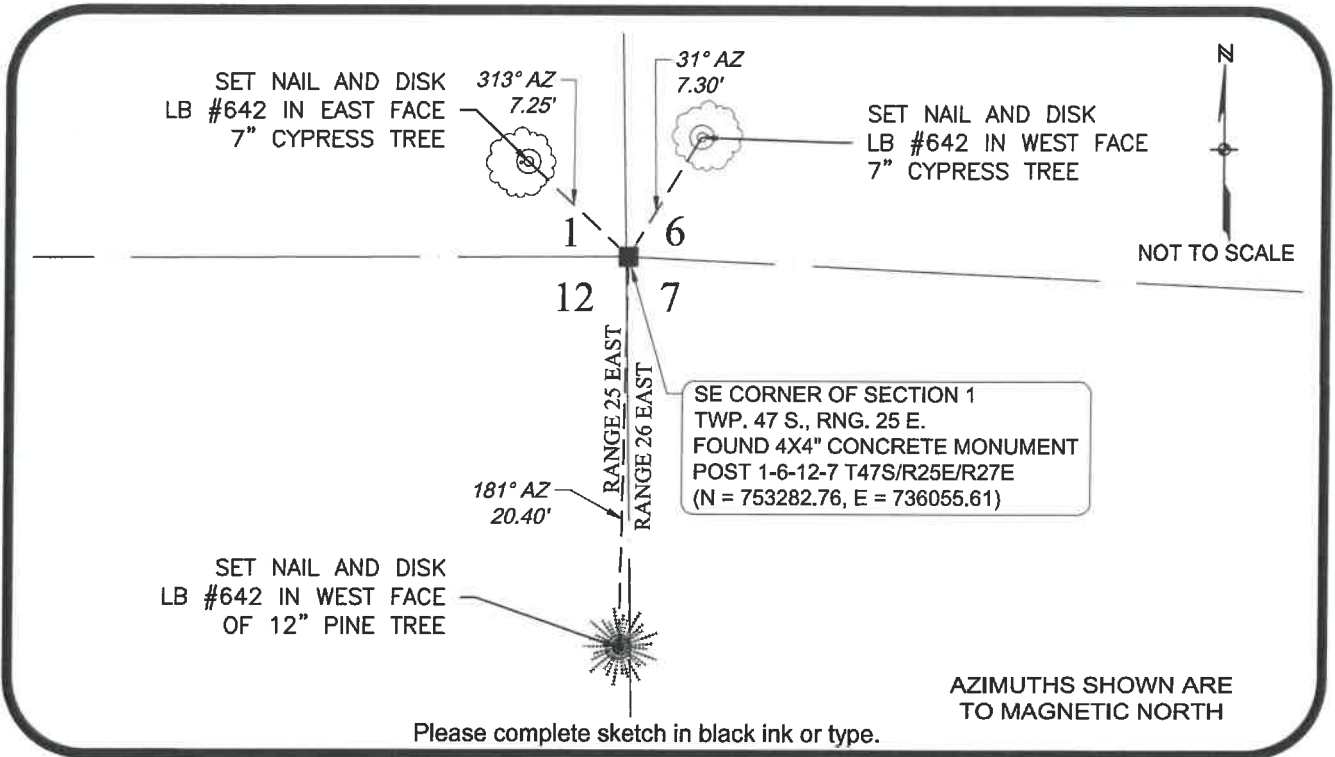
Y(NORTHING-Ft.) 753282.761 X(EASTING-Ft.) 736055.613 Zone FL West

Horizontal datum: NAD83(2011)

Source: _____

Determined by: GPS (VRS)

- EXISTING
 OBLITERATED
 LOST



SURVEYORS CERTIFICATE:

I certify the monument and accessories indicated above were field located on 10/05/2017

 SIGNATURE 4912
 Johnson Engineering, Inc. PSM NO.
 FIRM OR AGENCY 642
 2122 Johnson Street LB NO.
 ADDRESS
 Fort Myers Florida 33901
 CITY STATE ZIP
 866-367-4400
 PHONE NUMBER DATE

SEND ORIGINAL TO:
 Department of Environmental Protection
 Bureau of Surveying and Mapping
 3900 Commonwealth Boulevard
 Mail Station 105
 Tallahassee, Florida 32399

NOTE: Do not make changes to this form

D.E.P. USE ONLY

Processed: _____

B.L.M. - I.D. _____

QUAD - I.D. _____

EMBOSSSED SEAL OVER SIGNATURE

CERTIFIED CORNER RECORD

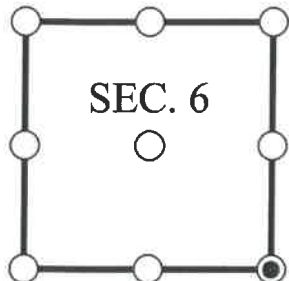
DOC. # _____

SE Corner of Section 6, Township 47, Range 26, LEE County

- GLO CORNER (PROVEN)
 LAND GRANT CORNER
 HISTORIC CORNER
 OTHER CORNER

CORNER DESCRIPTION: MONUMENT DESCRIPTION (EVIDENCE FOUND OR METHOD USED TO SET)

Depict corner with 



FOUND 5/8" IRON ROD (NO I.D.) AT LOCATION SHOWN ON PREVIOUS SURVEY OF SECTIONS 5,6,7, AND 8 BY JOHNSON ENGINEERING, INC, DATED 08/15/2003.

HORIZONTAL POSITION INFORMATION (if determined):

Latitude: N26° 24' 18.5254" Longitude: W81° 44' 25.3055"

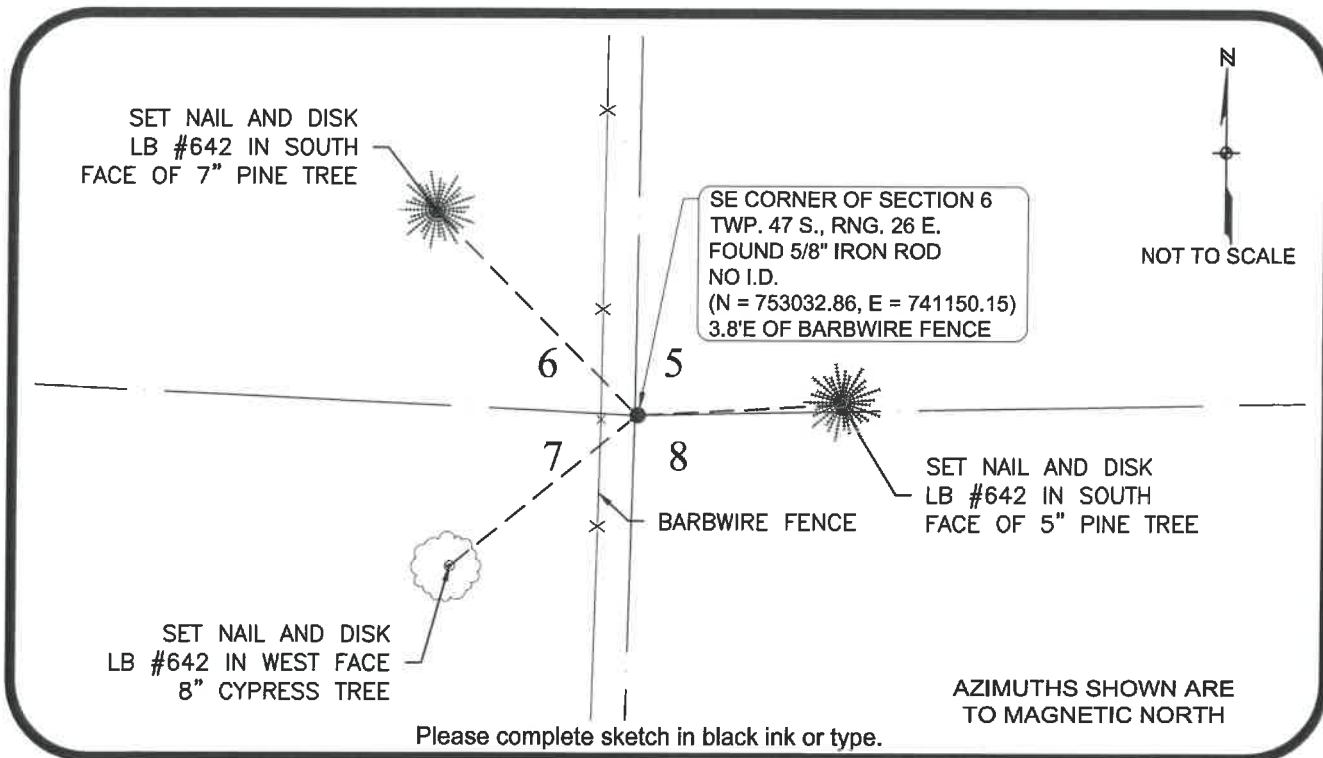
Y(NORTHING-Ft.) 753032.864 X(EASTING-Ft.) 741150.149 Zone FL West

Horizontal datum: NAD83(2011)

Source: _____

Determined by: GPS (VRS)

- EXISTING
 OBLITERATED
 LOST



SURVEYORS CERTIFICATE:

I certify the monument and accessories indicated above were field located on 10/05/2017


 SIGNATURE _____
 Johnson Engineering, Inc.
 FIRM OR AGENCY _____
 2122 Johnson Street
 ADDRESS _____
 Fort Myers Florida 33901
 CITY STATE ZIP _____
 866-367-4400
 PHONE NUMBER DATE _____

4912
 PSM NO.
 642
 LB NO.

SEND ORIGINAL TO:
 Department of Environmental Protection
 Bureau of Surveying and Mapping
 3900 Commonwealth Boulevard
 Mail Station 105
 Tallahassee, Florida 32399

NOTE: Do not make changes to this form

D.E.P. USE ONLY

Processed: _____

B.L.M. - I.D. _____

QUAD - I.D. _____

EMBOSSSED SEAL OVER SIGNATURE

CERTIFIED CORNER RECORD

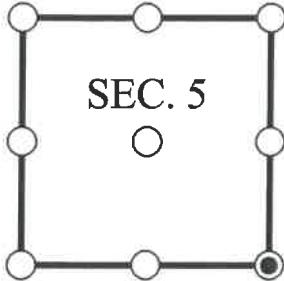
DOC. # _____

SE Corner of Section 5, Township 47, Range 26, LEE County

- GLO CORNER (PROVEN)
 LAND GRANT CORNER
 HISTORIC CORNER
 OTHER CORNER

CORNER DESCRIPTION: MONUMENT DESCRIPTION (EVIDENCE FOUND OR METHOD USED TO SET)

Depict corner with



FOUND 4x4" CONCRETE MONUMENT POST WITH "X" TOP AT LOCATION SHOWN ON PREVIOUS SURVEY OF SECTIONS 5 AND 8 BY JOHNSON ENGINEERING, INC, DATED 08/15/2003.

HORIZONTAL POSITION INFORMATION (if determined):

Latitude: N26° 24' 19.3529" Longitude: W81° 43' 28.9903"

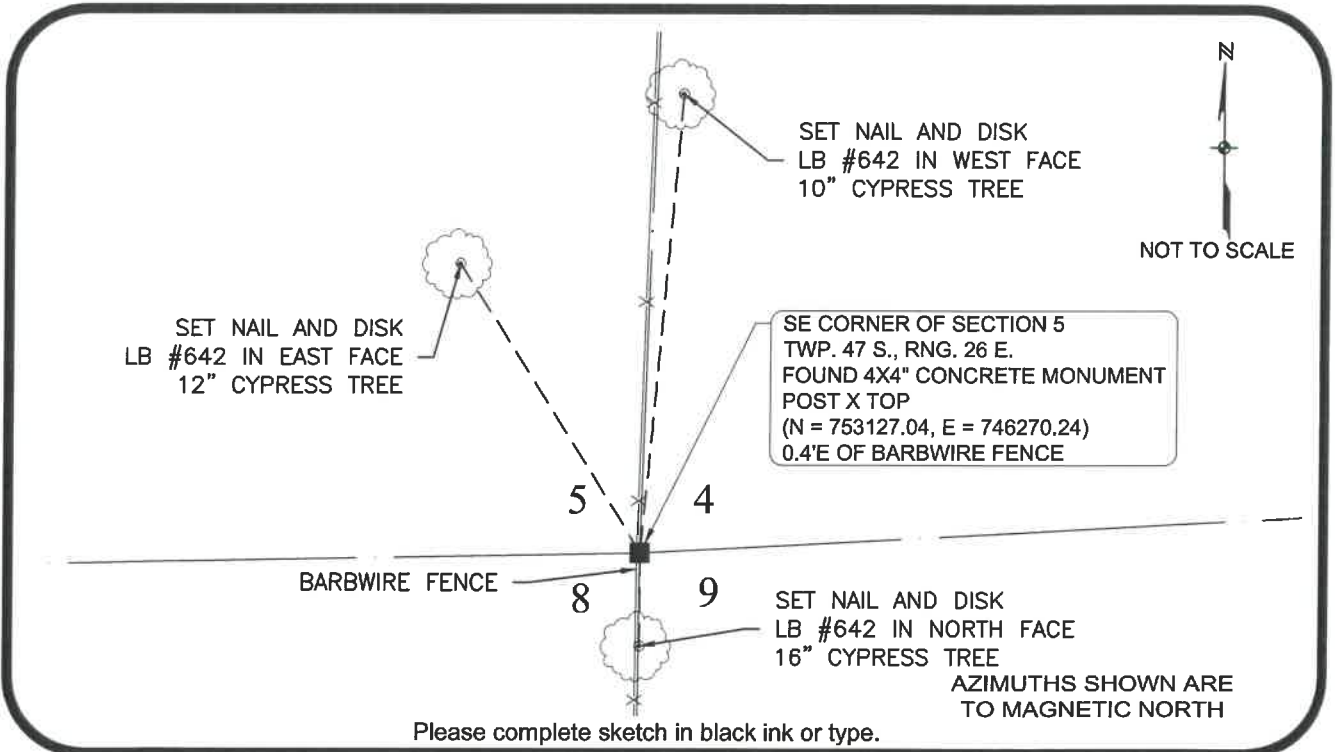
Y(NORTHING-Ft.) 753127.039 X(EASTING-Ft.) 746270.239 Zone FL West

Horizontal datum: NAD83(2011)

Source: _____

Determined by: GPS (VRS)

- EXISTING
 OBLITERATED
 LOST



SURVEYORS CERTIFICATE:

I certify the monument and accessories indicated above were field located on 10/05/2017

SIGNATURE _____ 4912 PSM NO. _____
 Johnson Engineering, Inc. 642 LB NO. _____
 FIRM OR AGENCY
 2122 Johnson Street
 ADDRESS
 Fort Myers Florida 33901
 CITY STATE ZIP
 866-367-4400
 PHONE NUMBER DATE

SEND ORIGINAL TO:
 Department of Environmental Protection
 Bureau of Surveying and Mapping
 3900 Commonwealth Boulevard
 Mail Station 105
 Tallahassee, Florida 32399

NOTE: Do not make changes to this form

D.E.P. USE ONLY

Processed: _____

B.L.M. - I.D. _____

QUAD - I.D. _____

EMBOSSSED SEAL OVER SIGNATURE

CERTIFIED CORNER RECORD

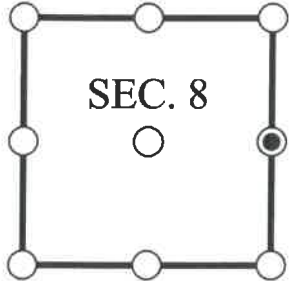
DOC. # _____

E 1/4 Corner of Section 8, Township 47, Range 26, LEE County

- GLO CORNER (PROVEN)
 LAND GRANT CORNER
 HISTORIC CORNER
 OTHER CORNER

CORNER DESCRIPTION: MONUMENT DESCRIPTION (EVIDENCE FOUND OR METHOD USED TO SET)

Depict corner with



FOUND 4x4" CONCRETE MONUMENT POST WITH "X" MARK CONSISTENT WITH CORNER RECORD 099785.

HORIZONTAL POSITION INFORMATION (if determined):

Latitude: N26° 23' 52.2411" Longitude: W81° 43' 29.3057"

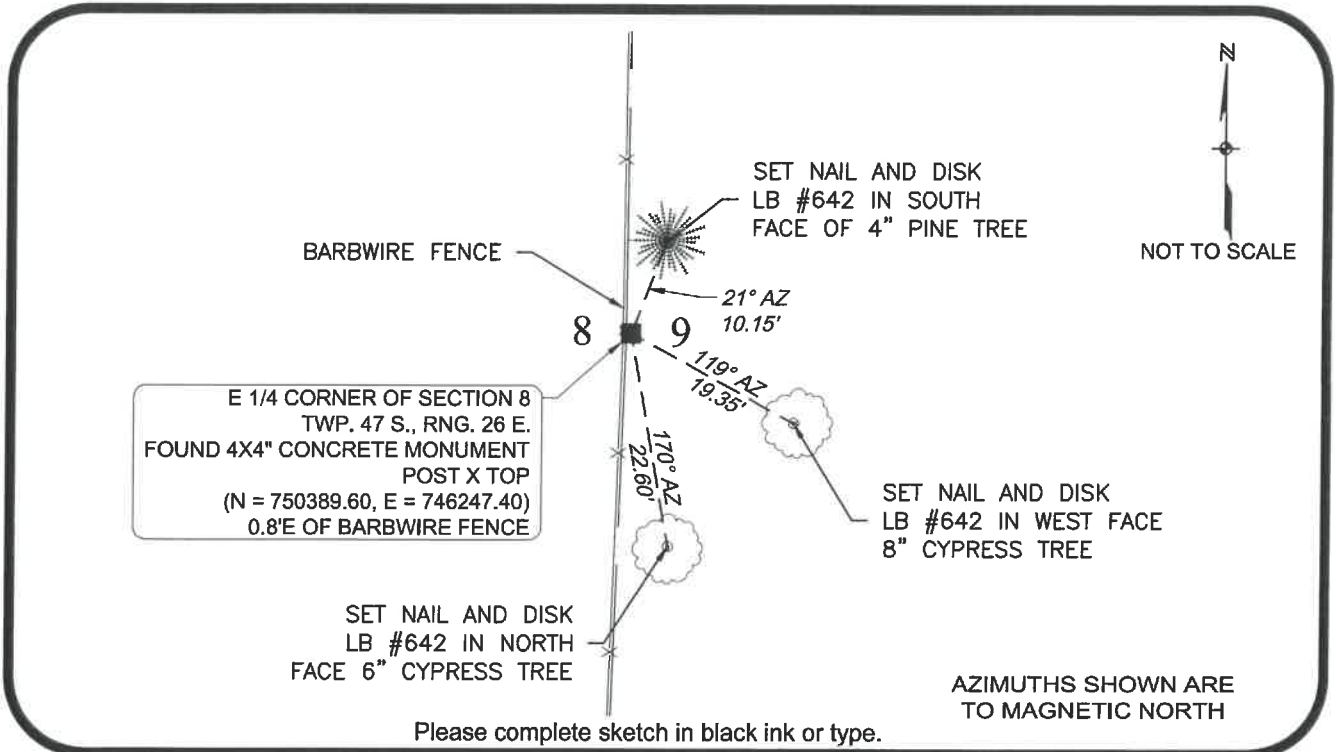
Y(NORTHING-Ft.) 750389.601 X(EASTING-Ft.) 746247.403 Zone FL West

Horizontal datum: NAD83(2011)

Source: _____

Determined by: GPS (VRS)

- EXISTING
 OBLITERATED
 LOST



SURVEYORS CERTIFICATE:

I certify the monument and accessories indicated above were field located on 10/05/2017

SIGNATURE _____ 4912
 Johnson Engineering, Inc. PSM NO.
 FIRM OR AGENCY _____ 642
 2122 Johnson Street LB NO.
 ADDRESS _____
 Fort Myers Florida 33901
 CITY STATE ZIP
 866-367-4400
 PHONE NUMBER DATE

SEND ORIGINAL TO:
 Department of Environmental Protection
 Bureau of Surveying and Mapping
 3900 Commonwealth Boulevard
 Mail Station 105
 Tallahassee, Florida 32399

NOTE: Do not make changes to this form

D.E.P. USE ONLY

Processed: _____

B.L.M. - I.D. _____

QUAD - I.D. _____

EMBOSSSED SEAL OVER SIGNATURE

CERTIFIED CORNER RECORD

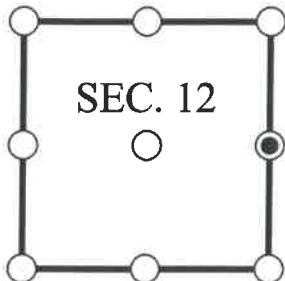
DOC. # _____

E 1/4 Corner of Section 12, Township 47, Range 25, LEE County

- GLO CORNER (PROVEN)
 LAND GRANT CORNER
 HISTORIC CORNER
 OTHER CORNER

CORNER DESCRIPTION: MONUMENT DESCRIPTION (EVIDENCE FOUND OR METHOD USED TO SET)

Depict corner with



FOUND FOUND 5/8" IRON AND CAP, I.D. NOT LEGIBLE,
CONSISTENT WITH CORNER RECORD 081743.

HORIZONTAL POSITION INFORMATION (if determined):

Latitude: N26° 23' 51.6825" Longitude: W81° 45' 20.7800"

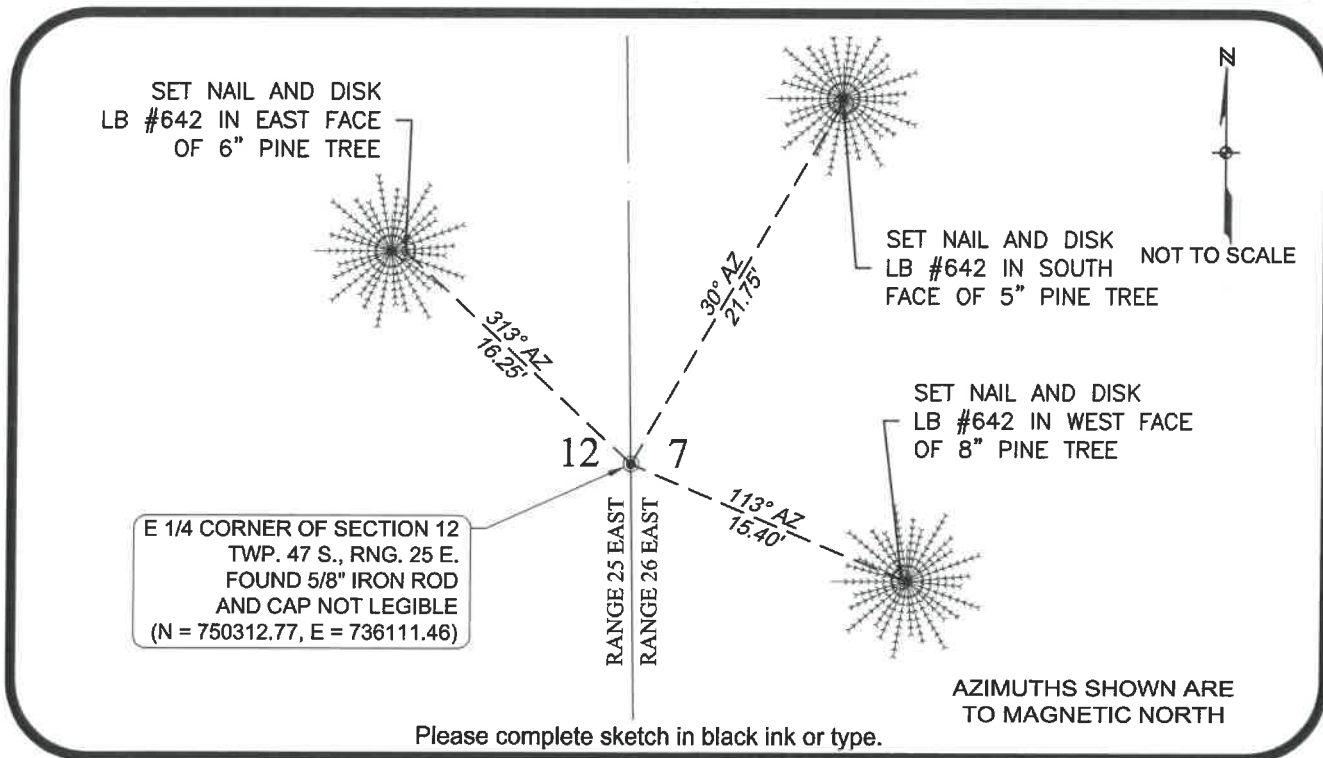
Y(NORTHING-Ft.) 750312.773 X(EASTING-Ft.) 736111.462 Zone FL West

Horizontal datum: NAD83(2011)

Source: _____

Determined by: GPS (VRS)

- EXISTING
 OBLITERATED
 LOST



SURVEYORS CERTIFICATE:

I certify the monument and accessories indicated above were field located on 10/06/2017

SIGNATURE _____ 4912 PSM NO.
 Johnson Engineering, Inc. 642
 FIRM OR AGENCY LB NO.
 2122 Johnson Street
 ADDRESS
 Fort Myers Florida 33901
 CITY STATE ZIP
 866-367-4400
 PHONE NUMBER DATE

SEND ORIGINAL TO:
 Department of Environmental Protection
 Bureau of Surveying and Mapping
 3900 Commonwealth Boulevard
 Mail Station 105
 Tallahassee, Florida 32399

NOTE: Do not make changes to this form

D.E.P. USE ONLY	
Processed:	_____
B.L.M. - I.D.	_____
QUAD - I.D.	_____

EMBOSSSED SEAL OVER SIGNATURE

CERTIFIED CORNER RECORD

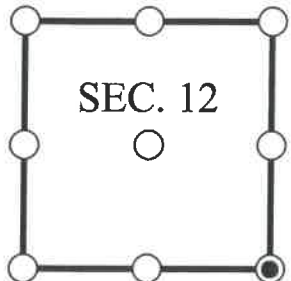
DOC. # _____

SE Corner of Section 12, Township 47, Range 25, LEE County

- GLO CORNER (PROVEN) LAND GRANT CORNER HISTORIC CORNER OTHER CORNER

CORNER DESCRIPTION: MONUMENT DESCRIPTION (EVIDENCE FOUND OR METHOD USED TO SET)

Depict corner with



FOUND LIGHT WOOD POST WITH NAIL CONSISTENT WITH CERTIFIED CORNER RECORD 081748 AND PREVIOUS SURVEY OF SECTIONS 12 AND 7 BY JOHNSON ENGINEERING, INC, DATED 08/15/2003..

HORIZONTAL POSITION INFORMATION (if determined):

Latitude: N26° 23' 22.2640" Longitude: W81° 45' 20.2263"

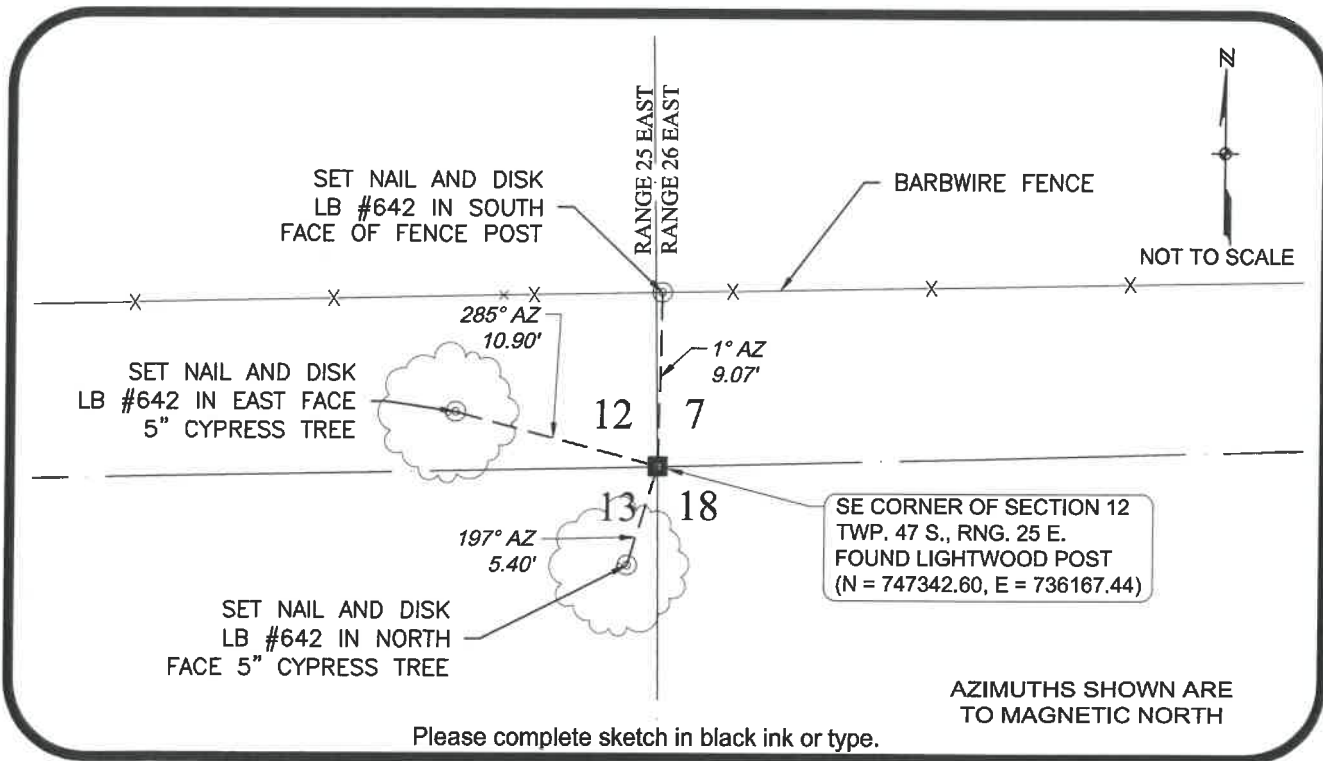
Y(NORTHING-Ft.) 747342.600 X(EASTING-Ft.) 736167.443 Zone FL West

Horizontal datum: NAD83(2011)

Source: _____

Determined by: GPS (VRS)

- EXISTING
 OBLITERATED
 LOST



SURVEYORS CERTIFICATE:

I certify the monument and accessories indicated above were field located on 10/06/2017

SIGNATURE _____ 4912 PSM NO. _____
 Johnson Engineering, Inc. 642
 FIRM OR AGENCY LB NO. _____
 2122 Johnson Street
 ADDRESS
 Fort Myers Florida 33901
 CITY STATE ZIP
 866-367-4400
 PHONE NUMBER DATE

SEND ORIGINAL TO:
 Department of Environmental Protection
 Bureau of Surveying and Mapping
 3900 Commonwealth Boulevard
 Mail Station 105
 Tallahassee, Florida 32399

NOTE: Do not make changes to this form

D.E.P. USE ONLY

Processed: _____
 B.L.M. - I.D. _____
 QUAD - I.D. _____

EMBOSSSED SEAL OVER SIGNATURE

CERTIFIED CORNER RECORD

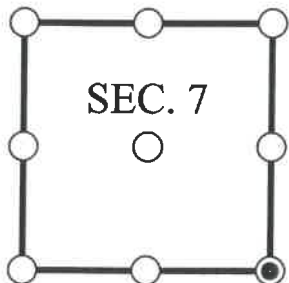
DOC. # _____

SE Corner of Section 7, Township 47, Range 26, LEE County

- GLO CORNER (PROVEN) LAND GRANT CORNER HISTORIC CORNER OTHER CORNER

CORNER DESCRIPTION: MONUMENT DESCRIPTION (EVIDENCE FOUND OR METHOD USED TO SET)

Depict corner with



FOUND 3x3" CONCRETE MONUMENT POST WITH ALUMINUM CAP STAMPED LB 642 CONSISTENT WITH CORNER RECORD 099786.

HORIZONTAL POSITION INFORMATION (if determined):

Latitude: N26° 23' 23.4634" Longitude: W81° 44' 26.9700"

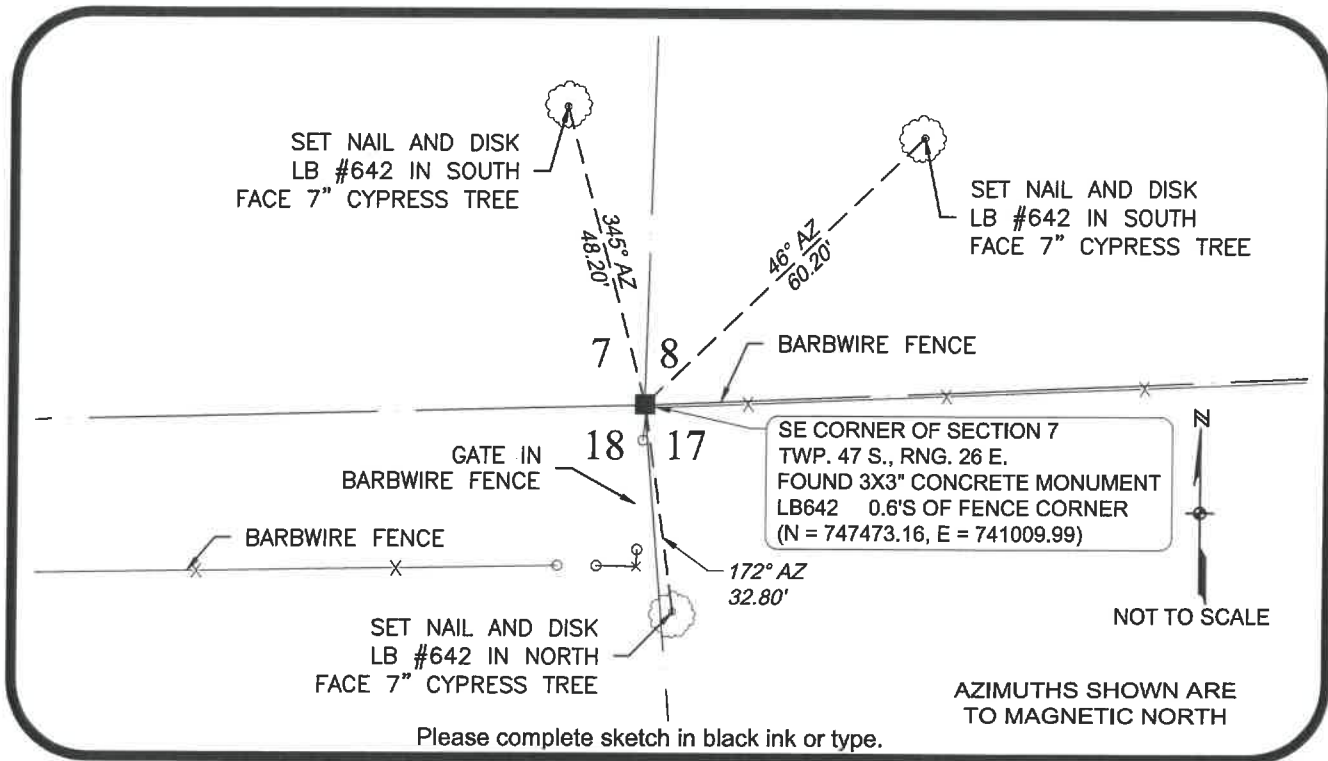
Y(NORTHING-Ft.) 747473.161 X(EASTING-Ft.) 741009.987 Zone FL West

Horizontal datum: NAD83(2011)

Source: _____

Determined by: GPS (VRS)

- EXISTING
 OBLITERATED
 LOST



SURVEYORS CERTIFICATE:

I certify the monument and accessories indicated above were field located on 10/06/2017

SIGNATURE _____ 4912 PSM NO.
 Johnson Engineering, Inc. 642
 FIRM OR AGENCY LB NO.
 2122 Johnson Street
 ADDRESS
 Fort Myers Florida 33901
 CITY STATE ZIP
 866-367-4400
 PHONE NUMBER DATE

EMBOSSSED SEAL OVER SIGNATURE

SEND ORIGINAL TO:
 Department of Environmental Protection
 Bureau of Surveying and Mapping
 3900 Commonwealth Boulevard
 Mail Station 105
 Tallahassee, Florida 32399

NOTE: Do not make changes to this form

D.E.P. USE ONLY

Processed: _____

B.L.M. - I.D. _____

QUAD - I.D. _____

CERTIFIED CORNER RECORD

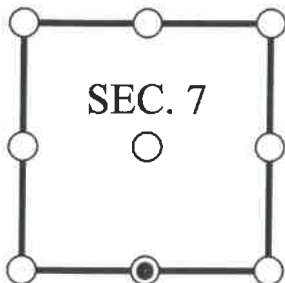
DOC. # _____

S 1/4 Corner of Section 7, Township 47, Range 26, LEE County

- GLO CORNER (PROVEN)
 LAND GRANT CORNER
 HISTORIC CORNER
 OTHER CORNER

CORNER DESCRIPTION: MONUMENT DESCRIPTION (EVIDENCE FOUND OR METHOD USED TO SET)

Depict corner with



FOUND 5/8" IRON ROD AND CAP, NOT LEGIBLE, CONSISTENT WITH CORNER RECORD 099794.

HORIZONTAL POSITION INFORMATION (if determined):

Latitude: N26° 23' 22.8622" Longitude: W81° 44' 53.6166"

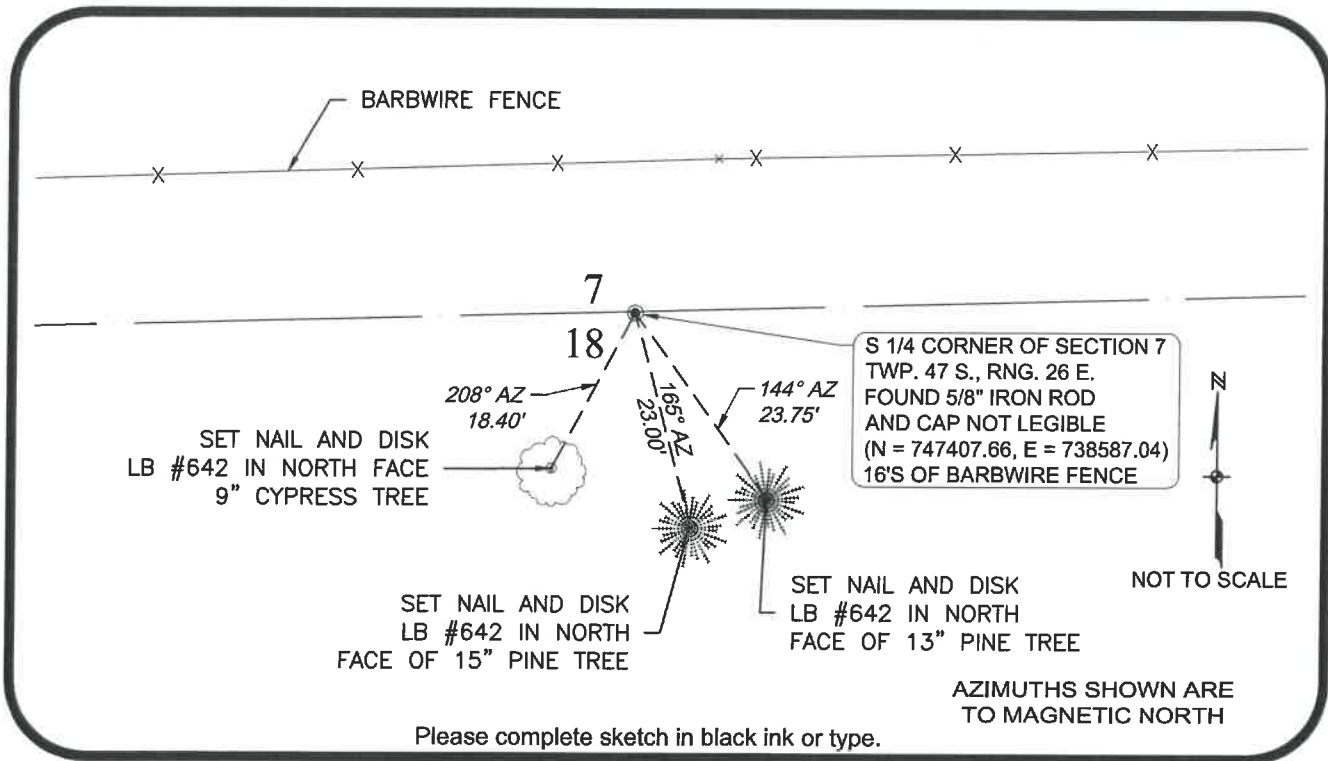
Y(NORTHING-Ft.) 747407.659 X(EASTING-Ft.) 738587.037 Zone FL West

Horizontal datum: NAD83(2011)

Source: _____

Determined by: GPS (VRS)

- EXISTING
 OBLITERATED
 LOST



Please complete sketch in black ink or type.

SURVEYORS CERTIFICATE:

I certify the monument and accessories indicated above were field located on 10/06/2017

 SIGNATURE 4912
 Johnson Engineering, Inc. PSM NO.
 FIRM OR AGENCY 642
 2122 Johnson Street LB NO.
 ADDRESS
 Fort Myers Florida 33901
 CITY STATE ZIP
 866-367-4400
 PHONE NUMBER DATE

EMBOSSSED SEAL OVER SIGNATURE

SEND ORIGINAL TO:
 Department of Environmental Protection
 Bureau of Surveying and Mapping
 3900 Commonwealth Boulevard
 Mail Station 105
 Tallahassee, Florida 32399

NOTE: Do not make changes to this form

D.E.P. USE ONLY

Processed: _____

B.L.M. - I.D. _____

QUAD - I.D. _____

CERTIFIED CORNER RECORD

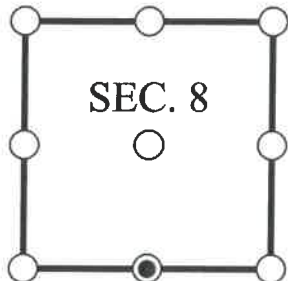
DOC. # _____

S 1/4 Corner of Section 8, Township 47, Range 26, LEE County

- GLO CORNER (PROVEN) LAND GRANT CORNER HISTORIC CORNER OTHER CORNER

CORNER DESCRIPTION: MONUMENT DESCRIPTION (EVIDENCE FOUND OR METHOD USED TO SET)

Depict corner with



FOUND 3/4" IRON PIPE AND CAP, LB 642, CONSISTENT WITH CORNER RECORD 099787.

HORIZONTAL POSITION INFORMATION (if determined):

Latitude: N26° 23' 24.5121" Longitude: W81° 43' 58.6717"

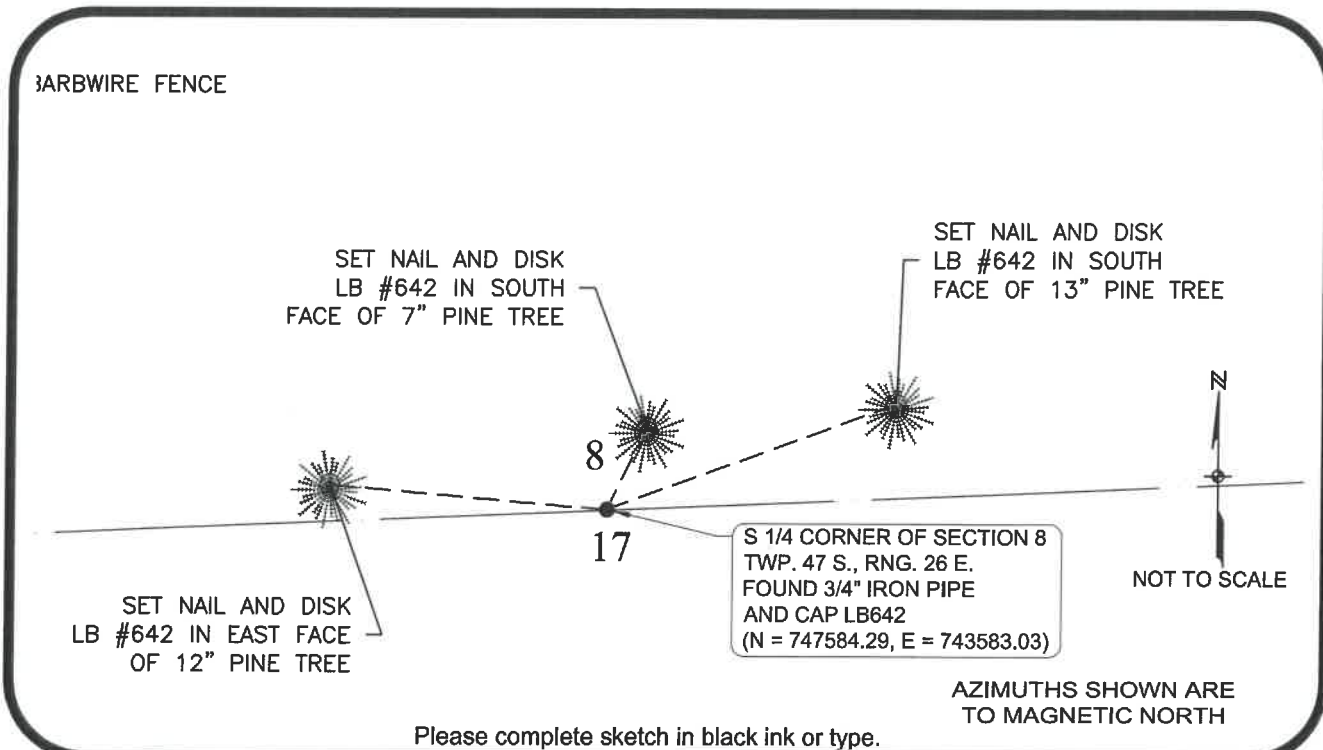
Y(NORTHING-Ft.) 747584.292 X(EASTING-Ft.) 743583.031 Zone FL West

Horizontal datum: NAD83(2011)

Source: _____

Determined by: GPS (VRS)

- EXISTING
 OBLITERATED
 LOST



SURVEYORS CERTIFICATE:

I certify the monument and accessories indicated above were field located on 10/06/2017

[Signature]
 SIGNATURE _____ 4912 PSM NO.
 Johnson Engineering, Inc. 642
 FIRM OR AGENCY LB NO.
 2122 Johnson Street
 ADDRESS
 Fort Myers Florida 33901
 CITY STATE ZIP
 866-367-4400
 PHONE NUMBER DATE

SEND ORIGINAL TO:
 Department of Environmental Protection
 Bureau of Surveying and Mapping
 3900 Commonwealth Boulevard
 Mail Station 105
 Tallahassee, Florida 32399

NOTE: Do not make changes to this form

D.E.P. USE ONLY

Processed: _____
 B.L.M. - I.D. _____
 QUAD - I.D. _____

EMBOSSSED SEAL OVER SIGNATURE

CERTIFIED CORNER RECORD

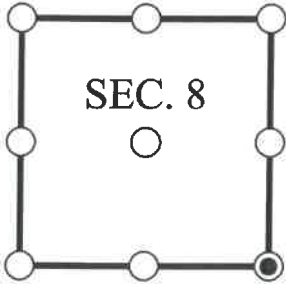
DOC. # _____

SE Corner of Section 8, Township 47, Range 26, LEE County

- GLO CORNER (PROVEN)
 LAND GRANT CORNER
 HISTORIC CORNER
 OTHER CORNER

CORNER DESCRIPTION: MONUMENT DESCRIPTION (EVIDENCE FOUND OR METHOD USED TO SET)

Depict corner with

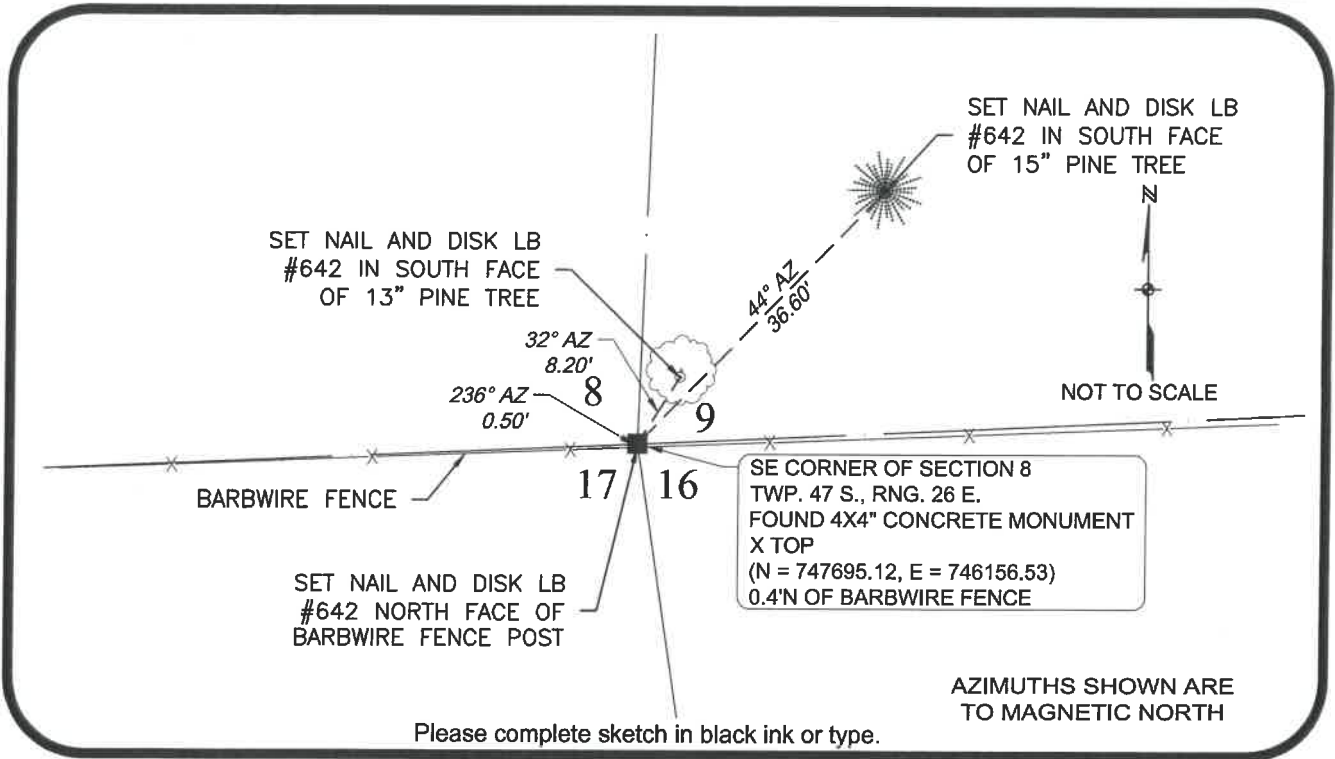


- EXISTING
 OBLITERATED
 LOST

FOUND 4x4" CONCRETE MONUMENT POST WITH "X" TOP, CONSISTENT WITH CORNER RECORD 099788.

HORIZONTAL POSITION INFORMATION (if determined):

Latitude: N26° 23' 25.5561" Longitude: W81° 43' 30.3683"
 Y(NORTHING-Ft.) 747695.116 X(EASTING-Ft.) 746156.530 Zone FL West
 Horizontal datum: NAD83(2011)
 Source: _____
 Determined by: GPS (VRS)



Please complete sketch in black ink or type.

SURVEYORS CERTIFICATE:

I certify the monument and accessories indicated above were field located on 10/06/2017

Walter Gumbert 4912
 SIGNATURE PSM NO.
Johnson Engineering, Inc. 642
 FIRM OR AGENCY LB NO.
2122 Johnson Street
 ADDRESS
Fort Myers Florida 33901
 CITY STATE ZIP
866-367-4400
 PHONE NUMBER DATE

EMBOSSSED SEAL OVER SIGNATURE

SEND ORIGINAL TO:
 Department of Environmental Protection
 Bureau of Surveying and Mapping
 3900 Commonwealth Boulevard
 Mail Station 105
 Tallahassee, Florida 32399

NOTE: Do not make changes to this form

D.E.P. USE ONLY

Processed: _____

B.L.M. - I.D. _____

QUAD - I.D. _____

CERTIFIED CORNER RECORD

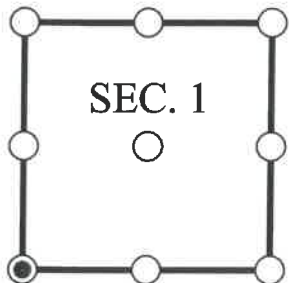
DOC. # _____

SW Corner of Section 1, Township 47, Range 25, LEE County

- GLO CORNER (PROVEN)
 LAND GRANT CORNER
 HISTORIC CORNER
 OTHER CORNER

CORNER DESCRIPTION: MONUMENT DESCRIPTION (EVIDENCE FOUND OR METHOD USED TO SET)

Depict corner with



FOUND 4x4" CONCRETE MONUMENT POST WITH STAMPED DISK CONSISTENT WITH CORNER RECORD 081742, STAMPED AS SHOWN.



HORIZONTAL POSITION INFORMATION (if determined):

Latitude: N26° 24' 21.0397" Longitude: W81° 46' 19.3237"

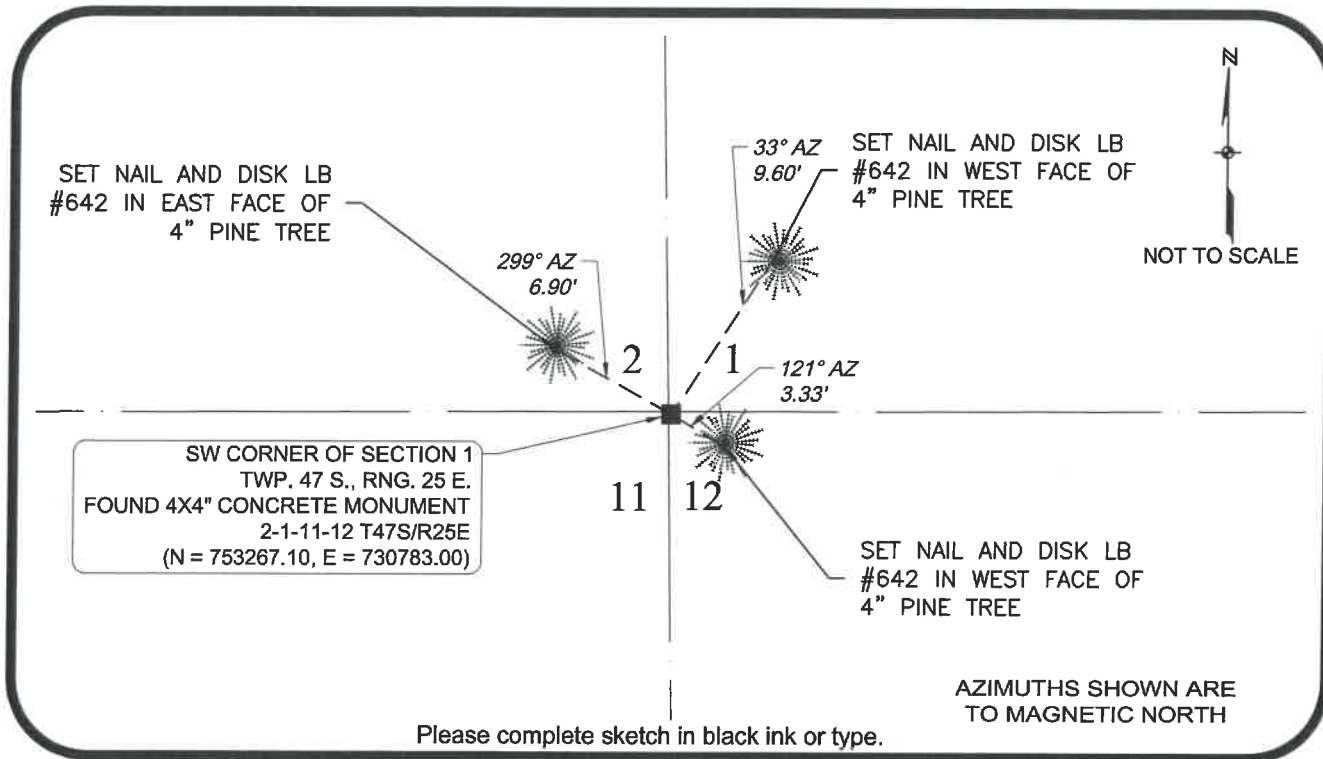
Y(NORTHING-Ft.) 753267.099 X(EASTING-Ft.) 730783.003 Zone FL West

Horizontal datum: NAD83(2011)

Source: _____

Determined by: GPS (VRS)

- EXISTING
 OBLITERATED
 LOST



SURVEYORS CERTIFICATE:

I certify the monument and accessories indicated above were field located on 10/06/2017

SIGNATURE _____ 4912 PSM NO.
 Johnson Engineering, Inc. 642
 FIRM OR AGENCY LB NO.
 2122 Johnson Street ADDRESS
 Fort Myers Florida 33901
 CITY STATE ZIP
 866-367-4400 PHONE NUMBER DATE

SEND ORIGINAL TO:
 Department of Environmental Protection
 Bureau of Surveying and Mapping
 3900 Commonwealth Boulevard
 Mail Station 105
 Tallahassee, Florida 32399

NOTE: Do not make changes to this form

D.E.P. USE ONLY

Processed: _____

B.L.M. - I.D. _____

QUAD - I.D. _____

EMBOSSSED SEAL OVER SIGNATURE

CERTIFIED CORNER RECORD

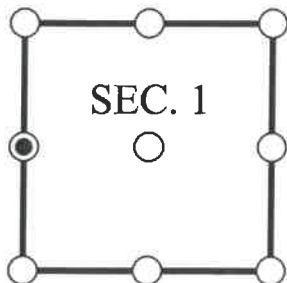
DOC. # _____

W 1/4 Corner of Section 1, Township 47, Range 25, LEE County

- GLO CORNER (PROVEN)
 LAND GRANT CORNER
 HISTORIC CORNER
 OTHER CORNER

CORNER DESCRIPTION: MONUMENT DESCRIPTION (EVIDENCE FOUND OR METHOD USED TO SET)

Depict corner with



FOUND 4x4" CONCRETE MONUMENT POST WITH DISK CONSISTENT WITH CORNER RECORD 081652, DISK NOT LEGIBLE AS IT WAS UNDER WATER AT TIME OF RECOVERY, STAMPING PER PREVIOUS RECORD SHOWN FOR REFERENCE.

DENI
ASSOCIATES
T47S
211 LS 3950
R25E

HORIZONTAL POSITION INFORMATION (if determined):

Latitude: N26° 24' 47.3358" Longitude: W81° 46' 19.8973"

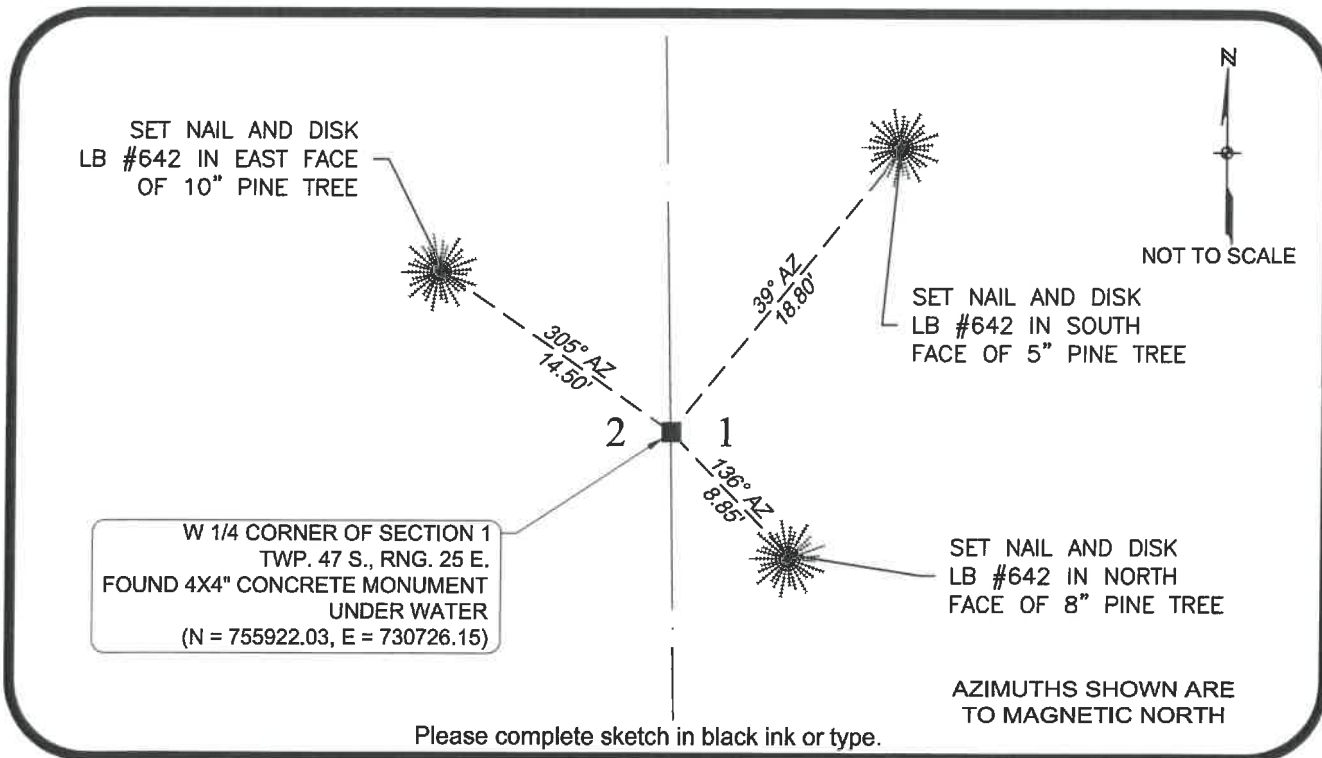
Y(NORTHING-Ft.) 755922.028 X(EASTING-Ft.) 730726.152 Zone FL West

Horizontal datum: NAD83(2011)

Source: _____

Determined by: GPS (VRS)

- EXISTING
 OBLITERATED
 LOST



SURVEYORS CERTIFICATE:

I certify the monument and accessories indicated above were field located on 10/07/2017


 SIGNATURE _____ 4912 PSM NO.
 Johnson Engineering, Inc. 642
 FIRM OR AGENCY LB NO.
 2122 Johnson Street
 ADDRESS
 Fort Myers Florida 33901
 CITY STATE ZIP
 866-367-4400
 PHONE NUMBER DATE

SEND ORIGINAL TO:
 Department of Environmental Protection
 Bureau of Surveying and Mapping
 3900 Commonwealth Boulevard
 Mail Station 105
 Tallahassee, Florida 32399

NOTE: Do not make changes to this form

D.E.P. USE ONLY	
Processed:	_____
B.L.M. - I.D.	_____
QUAD - I.D.	_____

EMBOSSSED SEAL OVER SIGNATURE

CERTIFIED CORNER RECORD

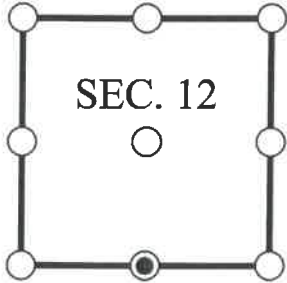
DOC. # _____

S 1/4 Corner of Section 12, Township 47, Range 25, LEE County

- GLO CORNER (PROVEN)
 LAND GRANT CORNER
 HISTORIC CORNER
 OTHER CORNER

CORNER DESCRIPTION: MONUMENT DESCRIPTION (EVIDENCE FOUND OR METHOD USED TO SET)

Depict corner with



FOUND 4x4" CONCRETE MONUMENT POST WITH
BROKEN TOP, CONSISTENT WITH CORNER RECORD
081747.

HORIZONTAL POSITION INFORMATION (if determined):

Latitude: N26° 23' 21.7615" Longitude: W81° 45' 49.2920"

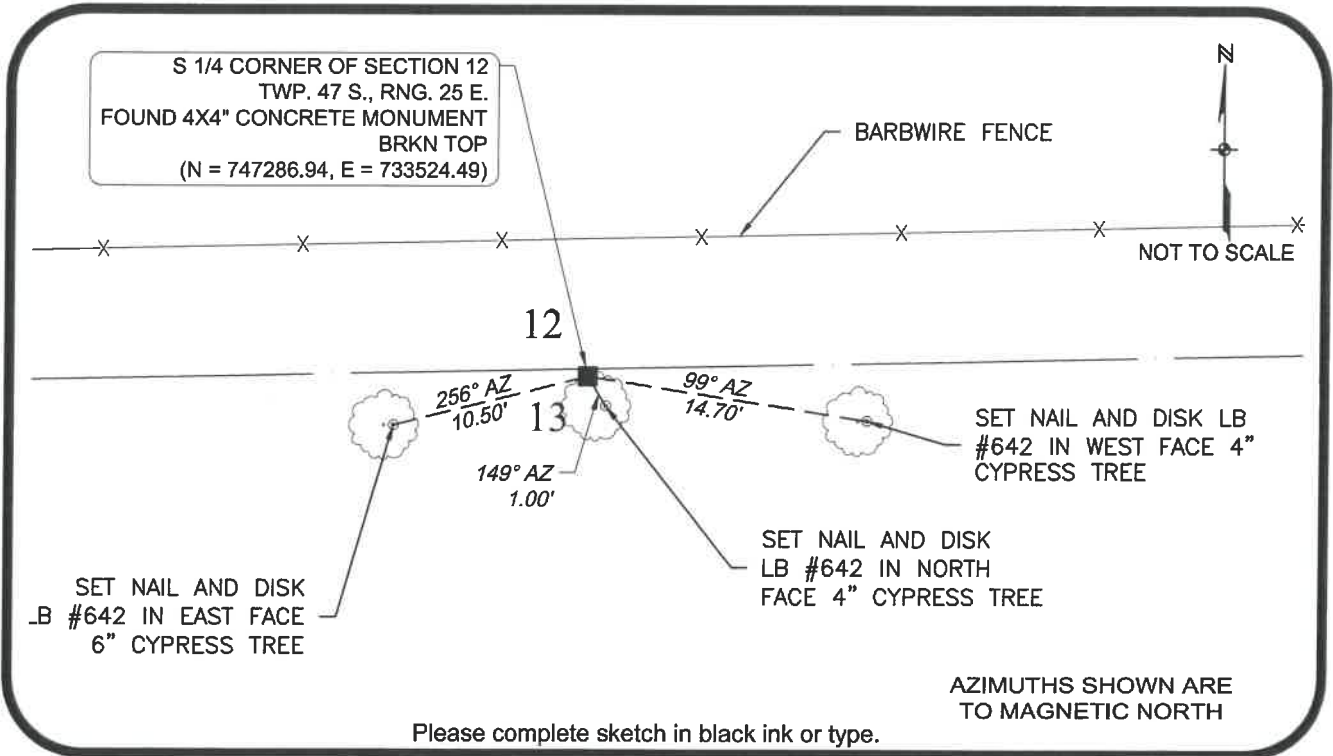
Y(NORTHING-Ft.) 747286.937 X(EASTING-Ft.) 733524.486 Zone FL West

Horizontal datum: NAD83(2011)

Source: _____

Determined by: GPS (VRS)

- EXISTING
 OBLITERATED
 LOST



SURVEYORS CERTIFICATE:

I certify the monument and accessories indicated above were field located on 10/07/2017

_____ 4912
SIGNATURE PSM NO.
 Johnson Engineering, Inc. 642
FIRM OR AGENCY LB NO.
 2122 Johnson Street
ADDRESS
 Fort Myers Florida 33901
CITY STATE ZIP
 866-367-4400
PHONE NUMBER DATE

SEND ORIGINAL TO:
 Department of Environmental Protection
 Bureau of Surveying and Mapping
 3900 Commonwealth Boulevard
 Mail Station 105
 Tallahassee, Florida 32399

NOTE: Do not make changes to this form

D.E.P. USE ONLY

Processed: _____

B.L.M. - I.D. _____

QUAD - I.D. _____

EMBOSSSED SEAL OVER SIGNATURE