

# CERTIFIED CORNER RECORD

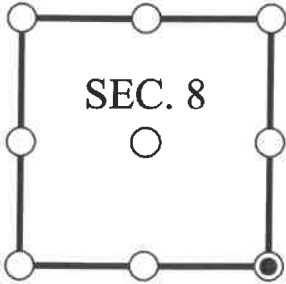
DOC. # \_\_\_\_\_

SE Corner of Section 8, Township 47, Range 26, LEE County

- GLO CORNER (PROVEN)  
  LAND GRANT CORNER  
  HISTORIC CORNER  
  OTHER CORNER

CORNER DESCRIPTION:      MONUMENT DESCRIPTION (EVIDENCE FOUND OR METHOD USED TO SET)

Depict corner with



FOUND 4x4" CONCRETE MONUMENT POST WITH "X" TOP, CONSISTENT WITH CORNER RECORD 099788.

HORIZONTAL POSITION INFORMATION ( if determined ):

Latitude: N26° 23' 25.5561"      Longitude: W81° 43' 30.3683"

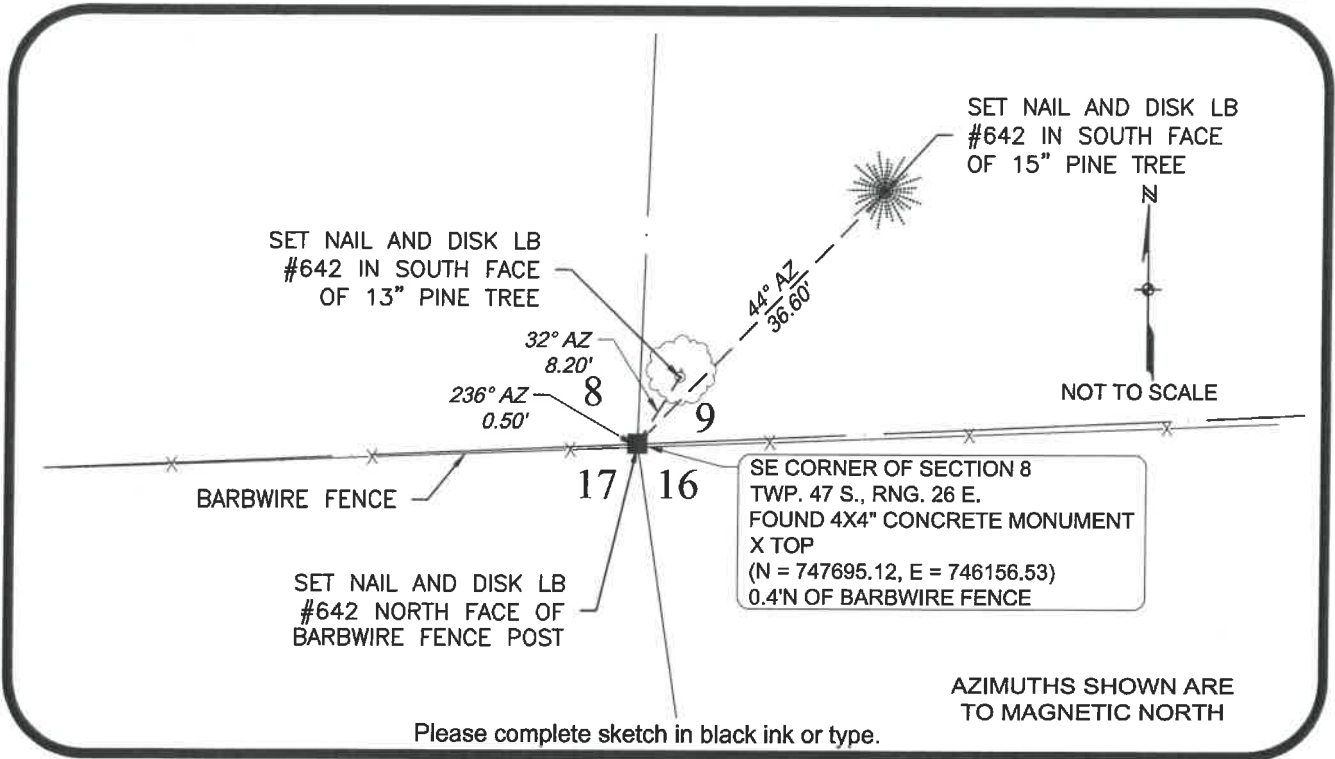
Y(NORTHING-Ft.) 747695.116    X(EASTING-Ft.) 746156.530    Zone FL West

Horizontal datum: NAD83(2011)

Source: \_\_\_\_\_

Determined by: GPS (VRS)

- EXISTING  
 OBLITERATED  
 LOST



Please complete sketch in black ink or type.

**SURVEYORS CERTIFICATE:**

I certify the monument and accessories indicated above were field located on 10/06/2017

\_\_\_\_\_  
 SIGNATURE      4912  
 \_\_\_\_\_  
 PSM NO.  
 Johnson Engineering, Inc.      642  
 FIRM OR AGENCY      LB NO.  
 2122 Johnson Street  
 ADDRESS  
 Fort Myers      Florida      33901  
 CITY      STATE      ZIP  
 866-367-4400  
 PHONE NUMBER      DATE

EMBOSSSED SEAL OVER SIGNATURE

SEND ORIGINAL TO:  
 Department of Environmental Protection  
 Bureau of Surveying and Mapping  
 3900 Commonwealth Boulevard  
 Mail Station 105  
 Tallahassee, Florida 32399

**NOTE: Do not make changes to this form**

D.E.P. USE ONLY

Processed: \_\_\_\_\_

B.L.M. - I.D. \_\_\_\_\_

QUAD - I.D. \_\_\_\_\_