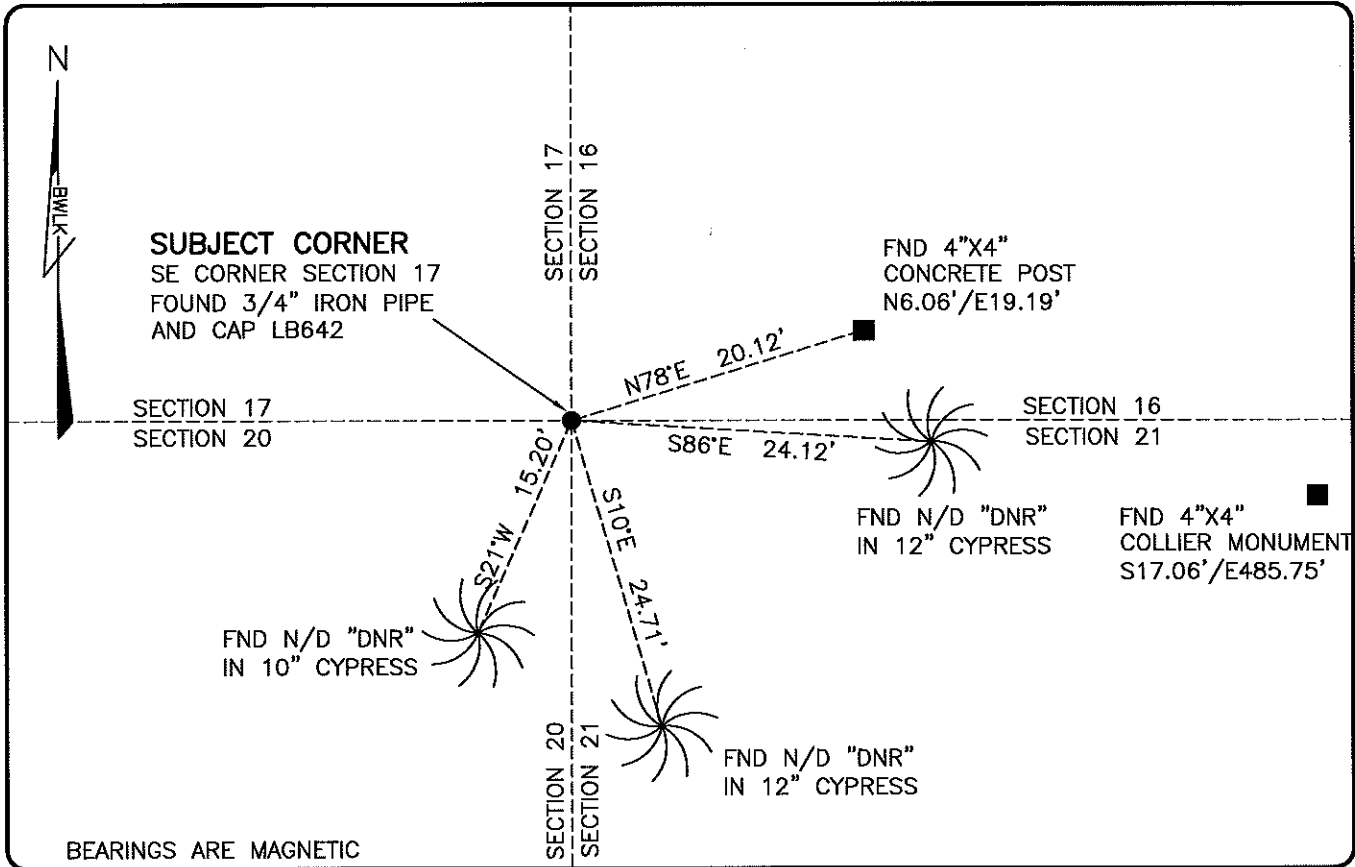


**LAND CORNER RECORD**

**PUBLIC WORKS  
LEE COUNTY, FLORIDA**

Address - 1500 Monroe St., Ft. Myers, Fla. 33901

Phone : (239) 479-8900



BEARINGS ARE MAGNETIC

**COMMENTS:**

FOUND SUBJECT CORNER IN HARMONY WITH HISTORICAL RECORDS. A MULTIPLE SECTION SURVEY PREPARED BY JOHNSON ENGINEERING 1974 AND 1987 SHOWS THIS CORNER AS BEING LOST AND RESET BY DOUBLE PROPORTION. FIELD LOCATED CORNER WAS FOUND TO BE IN HARMONY WITH CALCULATED DIMENSIONS SHOWN ON SAID 1974 AND 1987 SURVEY. CONFORMS WITH ANNEXATION DESCRIPTION IN CITY OF BONITA SPRINGS ORDINANCE 03-09. MULTIPLE MONUMENTS AT THIS CORNER.

**HORIZONTAL POSITION INFORMATION**

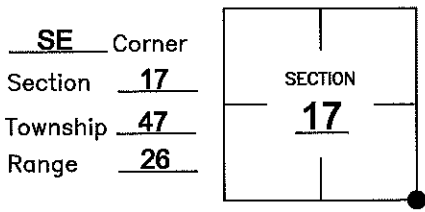
Florida West Zone, NAD 1983(2007 Adjustment)

Northing(ft) 742337.75 Easting(ft) 746622.99

Latitude 26°22'32.4853" Longitude 81°43'25.3649"

Scale Factor 0.99995

**CORNER DESCRIPTION**



**EXISTING CERTIFIED CORNER RECORDS**

| Document No. | Date           |
|--------------|----------------|
| <u>26266</u> | <u>7-20-87</u> |
|              |                |
|              |                |
|              |                |
|              |                |

The above documents are based on FDEP Bureau of Surveying and Mapping Record Information.

I hereby certify the monument and accessories shown above were field located on 3-1-10.

*Scott C. Whitaker*  
**SCOTT C. WHITAKER**  
 Professional Surveyor and Mapper  
 Florida Certificate No. 4324  
 Date Signed 4/26/10

BEAN, WHITAKER, LUTZ & KAREH, INC. (LB 4919)  
 13041 McGregor Boulevard  
 Fort Myers, Florida 33919-5910  
 Phone: (239) 481-1331

POINT NO. 15046

BLM REFERENCE NO. T47SR26E300400