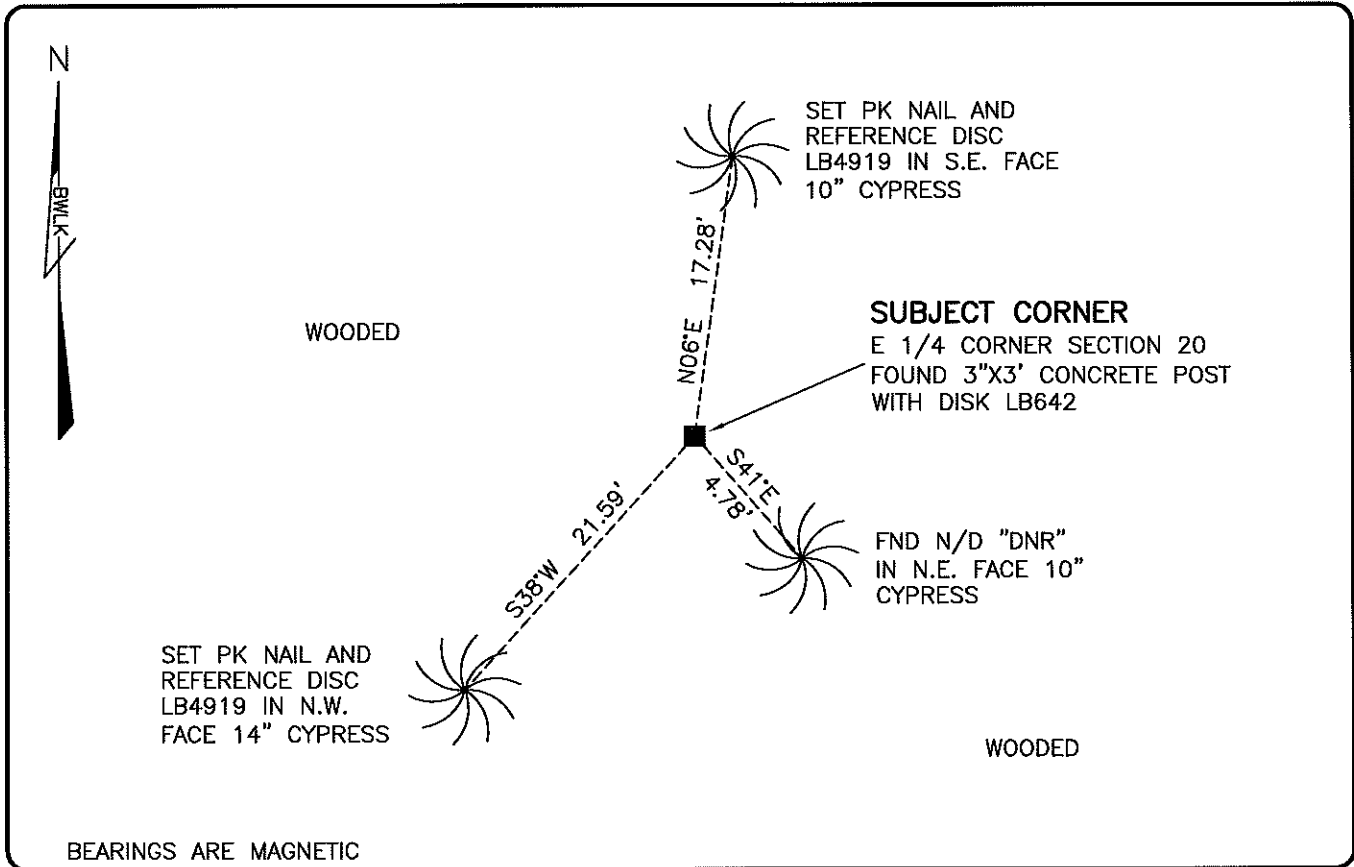


LAND CORNER RECORD

**PUBLIC WORKS
LEE COUNTY, FLORIDA**

Address - 1500 Monroe St., Ft. Myers, Fla. 33901

Phone : (239) 479-8900



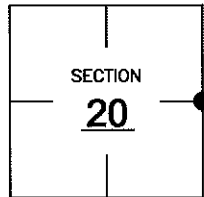
BEARINGS ARE MAGNETIC

COMMENTS:

FOUND SUBJECT CORNER IN HARMONY WITH HISTORICAL RECORDS. A MULTIPLE SECTION SURVEY PREPARED BY JOHNSON ENGINEERING IN 1987 SHOWS THIS CORNER BEING SET ON A SPLIT. FIELD LOCATED CORNER WAS FOUND TO BE IN HARMONY WITH DIMENSIONS SHOWN ON SAID SURVEY. CONFORMS WITH ANNEXATION DESCRIPTION IN CITY OF BONITA SPRINGS ORDINANCE 03-09.

CORNER DESCRIPTION

E 1/4 Corner
Section 20
Township 47
Range 26



HORIZONTAL POSITION INFORMATION

Florida West Zone, NAD 1983(2007 Adjustment)
Northing(ft) 739659.26 Easting(ft) 746800.42
Latitude 26°22'05.9531" Longitude 81°43'23.4771"
Scale Factor 0.99995

EXISTING CERTIFIED CORNER RECORDS

Document No.	Date
<u>26258</u>	<u>7-20-87</u>

The above documents are based on FDEP Bureau of Surveying and Mapping Record Information.

I hereby certify the monument and accessories shown above were field located on 3-1-10.

Scott C. Whitaker
SCOTT C. WHITAKER
Professional Surveyor and Mapper
Florida Certificate No. 4324
Date Signed 4/26/10

BEAN, WHITAKER, LUTZ & KAREH, INC. (LB 4919)
13041 McGregor Boulevard
Fort Myers, Florida 33919-5910
Phone: (239) 481-1331

POINT NO. 15047

BLM REFERENCE NO. T47SR26E300340