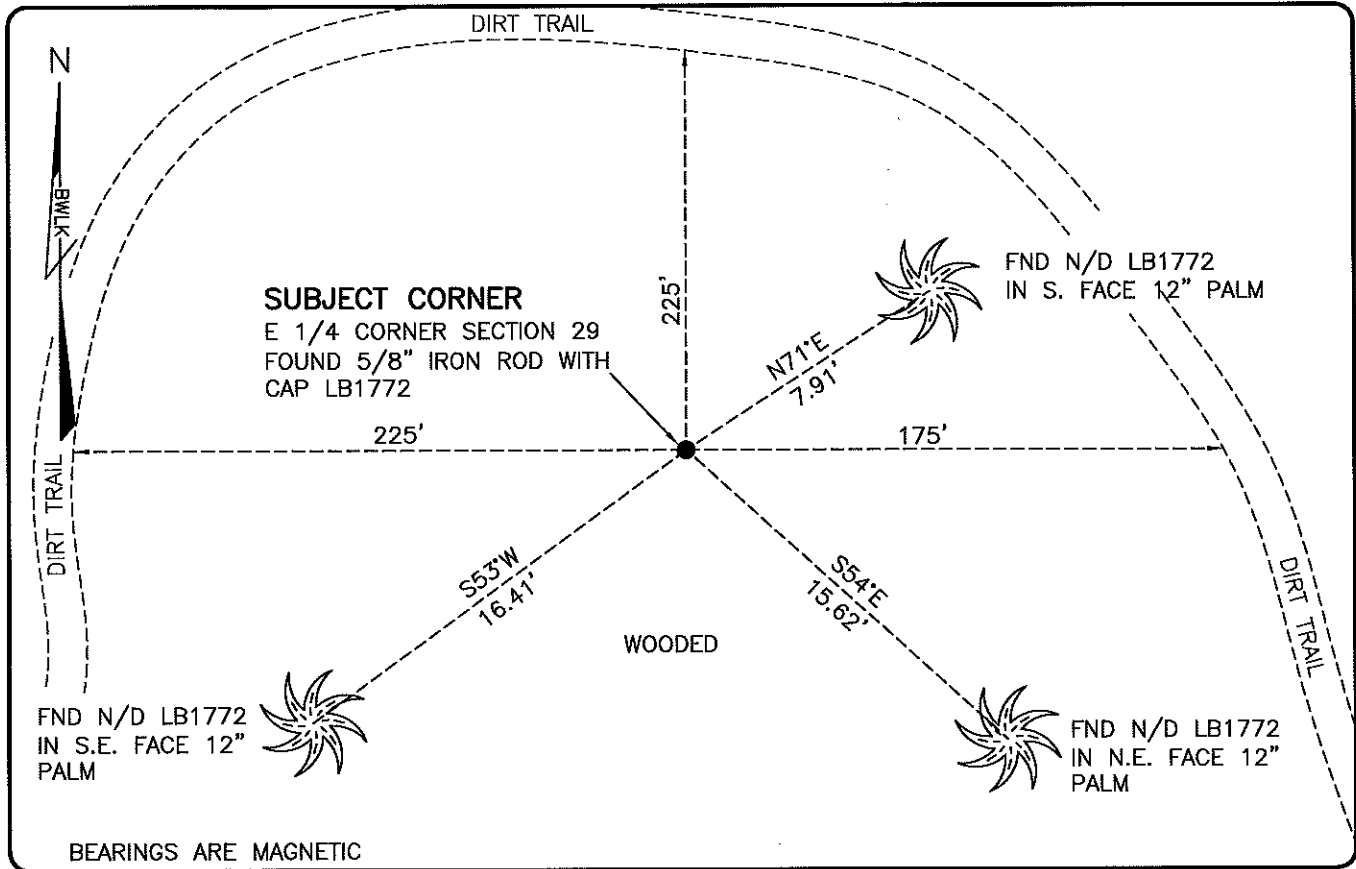


**LAND CORNER RECORD**

**PUBLIC WORKS  
LEE COUNTY, FLORIDA**

Address - 1500 Monroe St., Ft. Myers, Fla. 33901

Phone : (239) 479-8900



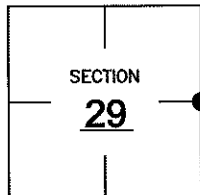
BEARINGS ARE MAGNETIC

**COMMENTS:**

FOUND SUBJECT CORNER IN HARMONY WITH HISTORICAL RECORDS INCLUDING A MULTIPLE SECTION SURVEY PREPARED BY AMEY, INC DATED 1961. FIELD LOCATED CORNER WAS FOUND TO AGREE WITH DIMENSIONS TO SECTION CORNERS SHOWN ON 1961 SURVEY. ALSO IN HARMONY WITH THE DESCRIPTION IN ANNEXATION ORDINANCE 07-16 AND REFERENCE TIES IN CCR 88819.

**CORNER DESCRIPTION**

**E 1/4** Corner  
Section 29  
Township 47  
Range 26



**HORIZONTAL POSITION INFORMATION**

Florida West Zone, NAD 1983(2007 Adjustment)

Northing(ft) 734324.40 Easting(ft) 746879.44

Latitude 26°21'13.1132" Longitude 81°43'22.7343"

Scale Factor 0.99995

**EXISTING CERTIFIED CORNER RECORDS**

Document No.	Date
<u>88819</u>	<u>8-31-06</u>

The above documents are based on FDEP Bureau of Surveying and Mapping Record Information.

I hereby certify the monument and accessories shown above were field located on 3-18-10.

*Scott C. Whitaker*

**SCOTT C. WHITAKER**  
Professional Surveyor and Mapper  
Florida Certificate No. 4324  
Date Signed 4-26-10

BEAN, WHITAKER, LUTZ & KAREH, INC. (LB 4919)  
13041 McGregor Boulevard  
Fort Myers, Florida 33919-5910  
Phone: (239) 481-1331

POINT NO. 15041

BLM REFERENCE NO. T47SR26E300240