

CERTIFIED CORNER RECORD

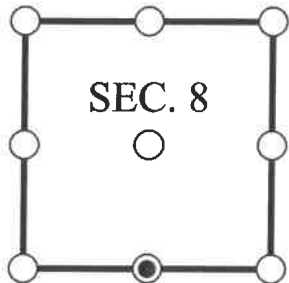
DOC. # _____

S 1/4 Corner of Section 8, Township 47, Range 26, LEE County

- GLO CORNER (PROVEN)
 LAND GRANT CORNER
 HISTORIC CORNER
 OTHER CORNER

CORNER DESCRIPTION: MONUMENT DESCRIPTION (EVIDENCE FOUND OR METHOD USED TO SET)

Depict corner with



FOUND 3/4" IRON PIPE AND CAP, LB 642, CONSISTENT WITH CORNER RECORD 099787.

HORIZONTAL POSITION INFORMATION (if determined):

Latitude: N26° 23' 24.5121" Longitude: W81° 43' 58.6717"

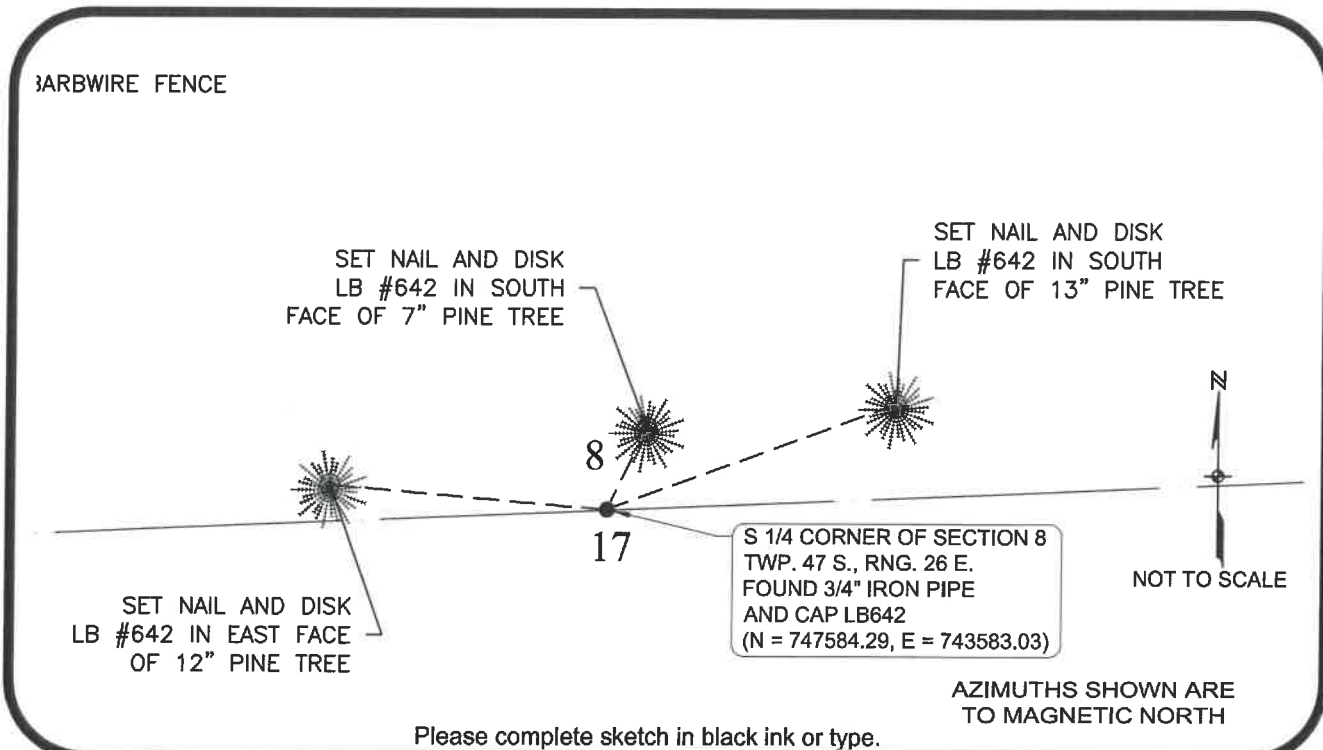
Y(NORTHING-Ft.) 747584.292 X(EASTING-Ft.) 743583.031 Zone FL West

Horizontal datum: NAD83(2011)

Source: _____

Determined by: GPS (VRS)

- EXISTING
 OBLITERATED
 LOST



Please complete sketch in black ink or type.

SURVEYORS CERTIFICATE:

I certify the monument and accessories indicated above were field located on 10/06/2017

SIGNATURE _____ 4912 PSM NO. _____
 Johnson Engineering, Inc. 642 LB NO. _____
 FIRM OR AGENCY
 2122 Johnson Street _____
 ADDRESS
 Fort Myers Florida 33901
 CITY STATE ZIP
 866-367-4400 _____
 PHONE NUMBER DATE

SEND ORIGINAL TO:
 Department of Environmental Protection
 Bureau of Surveying and Mapping
 3900 Commonwealth Boulevard
 Mail Station 105
 Tallahassee, Florida 32399

NOTE: Do not make changes to this form

D.E.P. USE ONLY

Processed: _____

B.L.M. - I.D. _____

QUAD - I.D. _____

EMBOSSSED SEAL OVER SIGNATURE