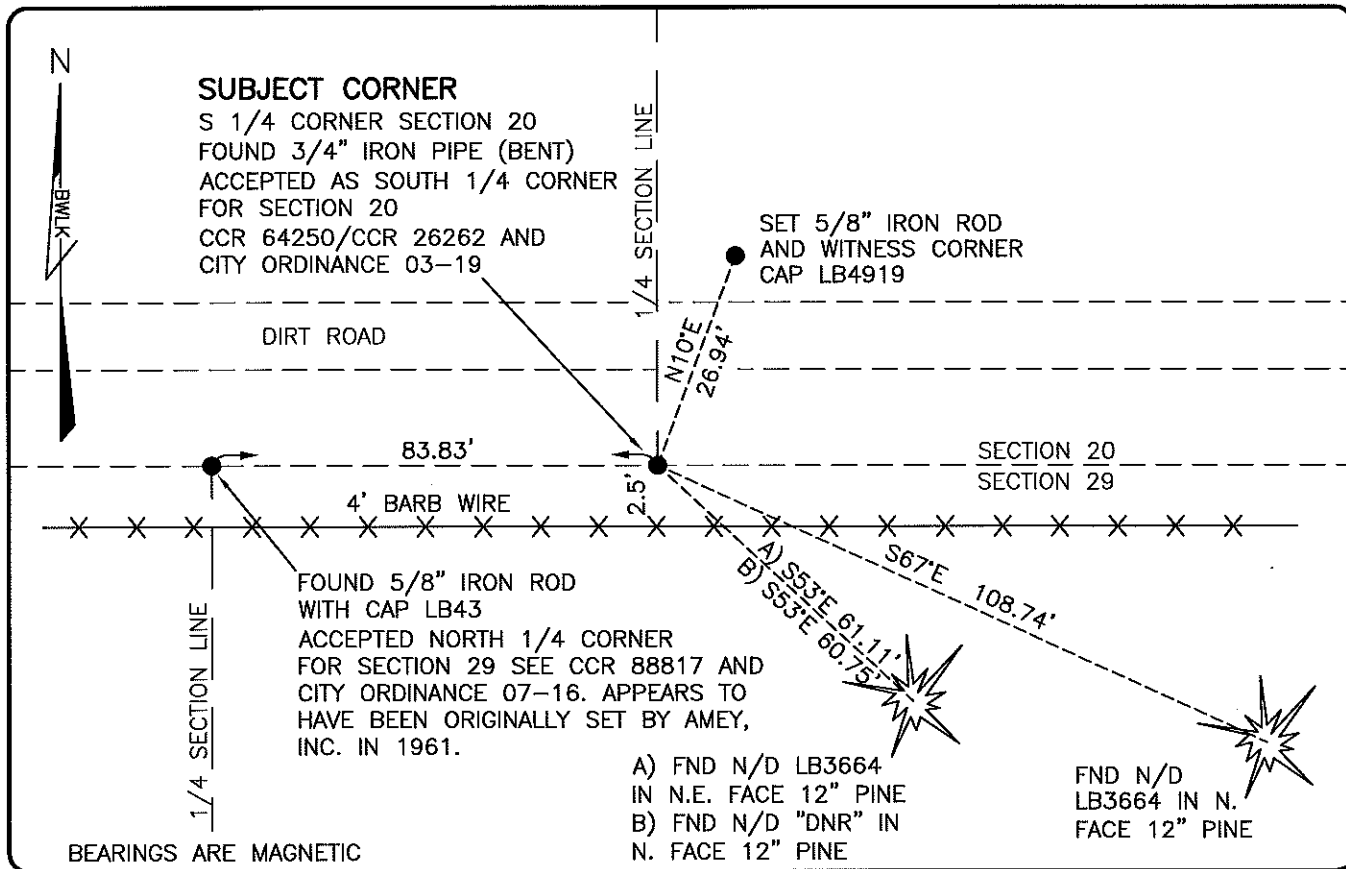


LAND CORNER RECORD

**PUBLIC WORKS
LEE COUNTY, FLORIDA**

Address - 1500 Monroe St., Ft. Myers, Fla. 33901

Phone : (239) 479-8900

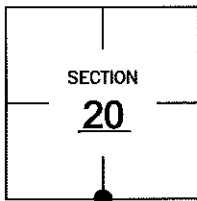


COMMENTS:

A MULTIPLE SECTION SURVEY PREPARED BY JOHNSON ENGINEERING IN 1987 SHOWS THIS CORNER BEING SET ON A SPLIT BETWEEN TWO SECTION CORNERS WHICH SPLIT FALLS 84'+/- EAST OF THE AMEY CORNER. SEE DESCRIPTION IN O.R. 4284 PG. 1 AND CITY OF BONITA SPRINGS ANNEXATION DESCRIPTION IN ORDINANCE 03-09. IT APPEARS DIFFERENT 1/4 CORNERS HAVE BEEN HELD WITHIN EACH SECTION (20 AND 29). THIS CORNER HAS THE POTENTIAL OF BEING DISPUTED.

CORNER DESCRIPTION

S 1/4 Corner
Section 20
Township 47
Range 26



HORIZONTAL POSITION INFORMATION

Florida West Zone, NAD 1983(2007 Adjustment)
Northing(ft) 736916.42 Easting(ft) 744314.25
Latitude 26°21'38.8392" Longitude 81°43'50.8754"
Scale Factor 0.99995

EXISTING CERTIFIED CORNER RECORDS

Document No.	Date
<u>88817</u>	<u>8-29-06</u>
<u>64250</u>	<u>4-9-99</u>
<u>26262</u>	<u>7-20-87</u>

The above documents are based on FDEP Bureau of Surveying and Mapping Record Information.

I hereby certify the monument and accessories shown above were field located on 3-3-10.

Scott C. Whitaker

SCOTT C. WHITAKER
Professional Surveyor and Mapper
Florida Certificate No. 4324
Date Signed 4-26-10
BEAN, WHITAKER, LUTZ & KAREH, INC. (LB 4919)
13041 McGregor Boulevard
Fort Myers, Florida 33919-5910
Phone: (239) 481-1331

POINT NO. 15051

BLM REFERENCE NO. T47SR26E240300