

CERTIFIED CORNER RECORD

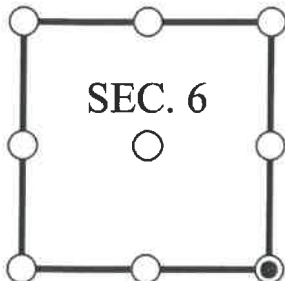
DOC. # _____

SE Corner of Section 6, Township 47, Range 26, LEE County

- GLO CORNER (PROVEN)
 LAND GRANT CORNER
 HISTORIC CORNER
 OTHER CORNER

CORNER DESCRIPTION: MONUMENT DESCRIPTION (EVIDENCE FOUND OR METHOD USED TO SET)

Depict corner with



FOUND 5/8" IRON ROD (NO I.D.) AT LOCATION SHOWN ON PREVIOUS SURVEY OF SECTIONS 5,6,7, AND 8 BY JOHNSON ENGINEERING, INC, DATED 08/15/2003.

HORIZONTAL POSITION INFORMATION (if determined):

Latitude: N26° 24' 18.5254" Longitude: W81° 44' 25.3055"

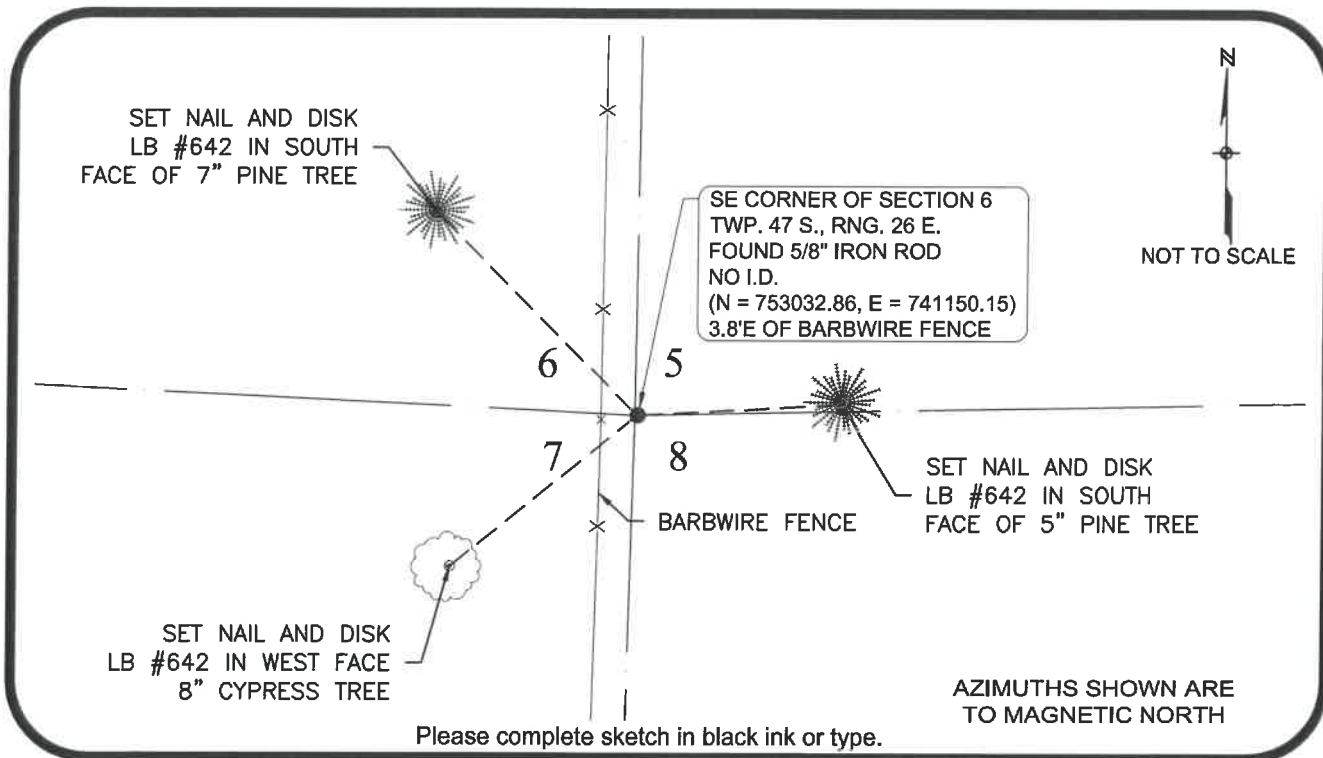
Y(NORTHING-Ft.) 753032.864 X(EASTING-Ft.) 741150.149 Zone FL West

Horizontal datum: NAD83(2011)

Source: _____

Determined by: GPS (VRS)

- EXISTING
 OBLITERATED
 LOST



SURVEYORS CERTIFICATE:

I certify the monument and accessories indicated above were field located on 10/05/2017

 SIGNATURE 4912
 Johnson Engineering, Inc. PSM NO.
 FIRM OR AGENCY 642
 2122 Johnson Street LB NO.
 ADDRESS
 Fort Myers Florida 33901
 CITY STATE ZIP
 866-367-4400
 PHONE NUMBER DATE

SEND ORIGINAL TO:
 Department of Environmental Protection
 Bureau of Surveying and Mapping
 3900 Commonwealth Boulevard
 Mail Station 105
 Tallahassee, Florida 32399

NOTE: Do not make changes to this form

D.E.P. USE ONLY

Processed: _____

B.L.M. - I.D. _____

QUAD - I.D. _____

EMBOSSSED SEAL OVER SIGNATURE