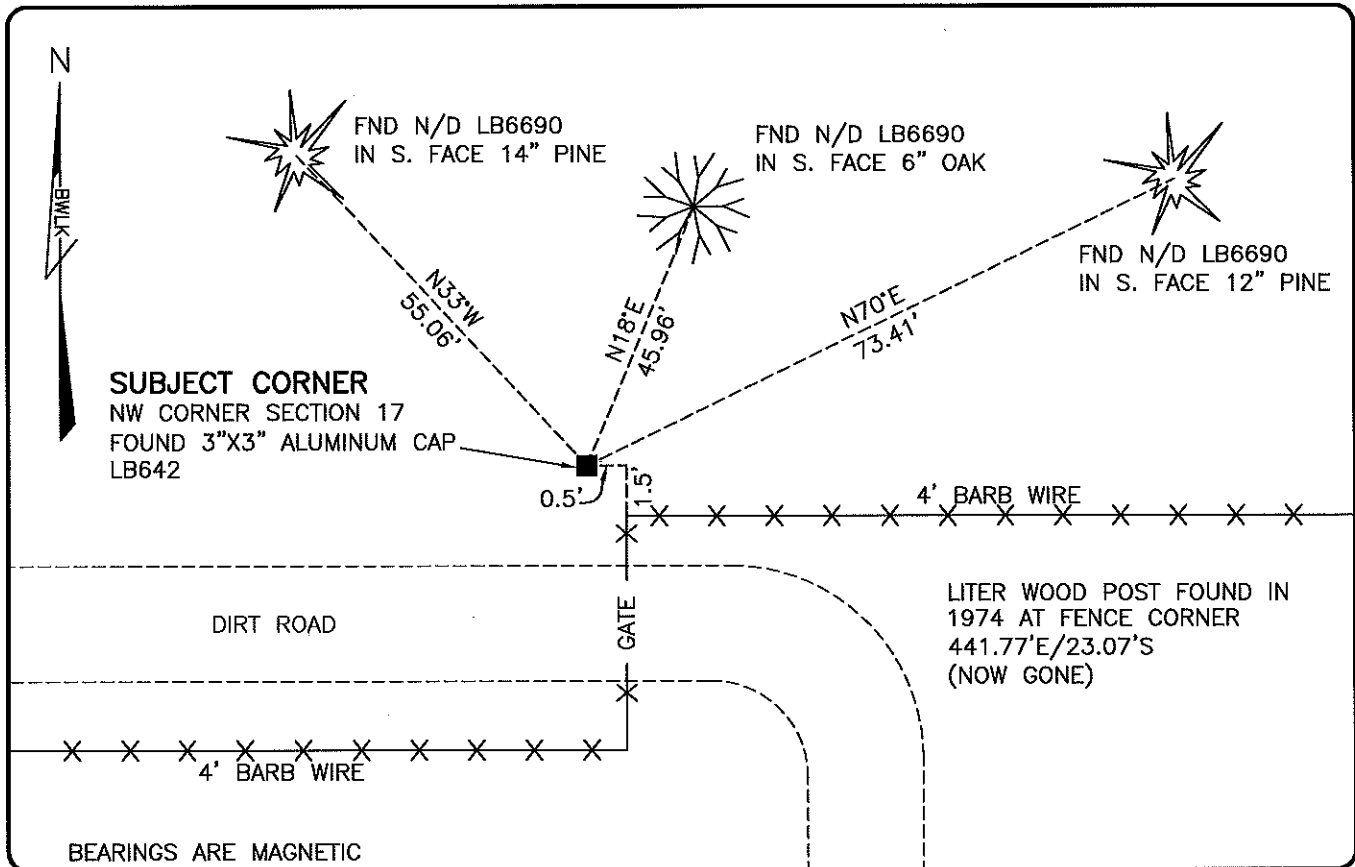


LAND CORNER RECORD

**PUBLIC WORKS
LEE COUNTY, FLORIDA**

Address - 1500 Monroe St., Ft. Myers, Fla. 33901

Phone : (239) 479-8900

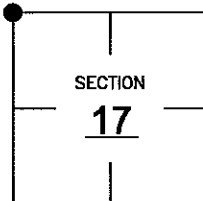


COMMENTS:

FOUND SUBJECT CORNER IN HARMONY WITH HISTORICAL RECORDS. A MULTIPLE SECTION SURVEY PREPARED BY JOHNSON ENGINEERING IN 1974 AND 1987 SHOWS THIS CORNER BEING PROVEN BY WITNESSES. FIELD AND CALCULATED DIMENSIONS TO THIS CORNER ARE IN HARMONY WITH SAID SURVEY. SEE QUIT CLAIM DESCRIPTION IN O.R. 2061 PG. 3137 AND CITY OF BONITA SPRINGS ANNEXATION DESCRIPTION IN ORDINANCE 03-09.

CORNER DESCRIPTION

NW Corner
Section 17
Township 47
Range 26



HORIZONTAL POSITION INFORMATION

Florida West Zone, NAD 1983(2007 Adjustment)
Northing(ft) 747473.08 Easting(ft) 741009.79
Latitude 26°23'23.4626" Longitude 81°44'26.9722"
Scale Factor 0.99995

EXISTING CERTIFIED CORNER RECORDS

Document No.	Date
<u>26260</u>	<u>7-20-87</u>

The above documents are based on FDEP Bureau of Surveying and Mapping Record Information.

I hereby certify the monument and accessories shown above were field located on 2-16-10.

Scott C. Whitaker
SCOTT C. WHITAKER
Professional Surveyor and Mapper
Florida Certificate No. 4324
Date Signed 4/26/10

BEAN, WHITAKER, LUTZ & KAREH, INC. (LB 4919)
13041 McGregor Boulevard
Fort Myers, Florida 33919-5910
Phone: (239) 481-1331

POINT NO. 15043

BLM REFERENCE NO. T47SR26E200500