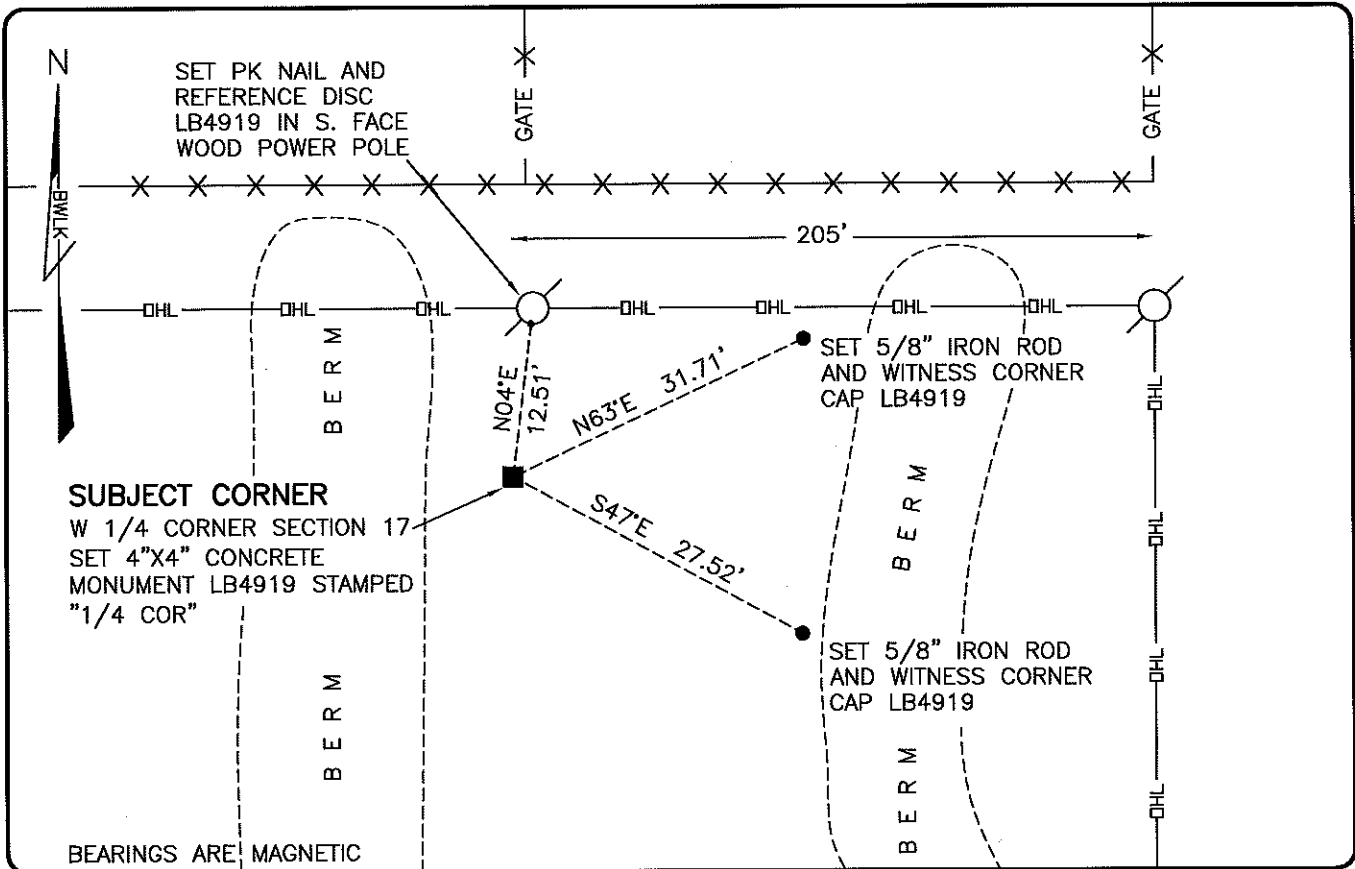


**LAND CORNER RECORD**

**PUBLIC WORKS  
LEE COUNTY, FLORIDA**

Address - 1500 Monroe St., Ft. Myers, Fla. 33901

Phone : (239) 479-8900

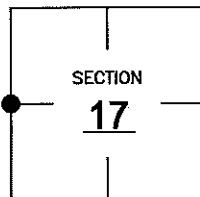


**COMMENTS:**

FOUND 5/8' IRON ROD-LAYED OVER AT CORNER. RESET SUBJECT CORNER BASED ON A MULTIPLE SECTION SURVEY PREPARED BY JOHNSON ENGINEERING DATED 1987 SHOWING THIS CORNER BEING CALCULATED ON A SPLIT (SINGLE PROPORTION). SEE QUIT CLAIM DESCRIPTION IN O.R. 2061 PG. 3137 AND CITY OF BONITA SPRINGS ANNEXATION DESCRIPTION IN ORDINANCE 03-09.

**CORNER DESCRIPTION**

W 1/4 Corner  
Section 17  
Township 47  
Range 26



**HORIZONTAL POSITION INFORMATION**

Florida West Zone, NAD 1983(2007 Adjustment)

Northing(ft) 744818.06 Easting(ft) 741224.67

Latitude 26°22'57.1623" Longitude 81°44'24.6680"

Scale Factor 0.99995

**EXISTING CERTIFIED CORNER RECORDS**

Document No.	Date
<u>NONE</u>	

The above documents are based on FDEP Bureau of Surveying and Mapping Record Information.

I hereby certify the monument and accessories shown above were field located on 4-1-10.

*Scott C. Whitaker*

**SCOTT C. WHITAKER**  
Professional Surveyor and Mapper  
Florida Certificate No. 4324  
Date Signed 4/26/10

BEAN, WHITAKER, LUTZ & KAREH, INC. (LB 4919)  
13041 McGregor Boulevard  
Fort Myers, Florida 33919-5910  
Phone: (239) 481-1331

POINT NO. 15054

BLM REFERENCE NO. T47SR26E200440