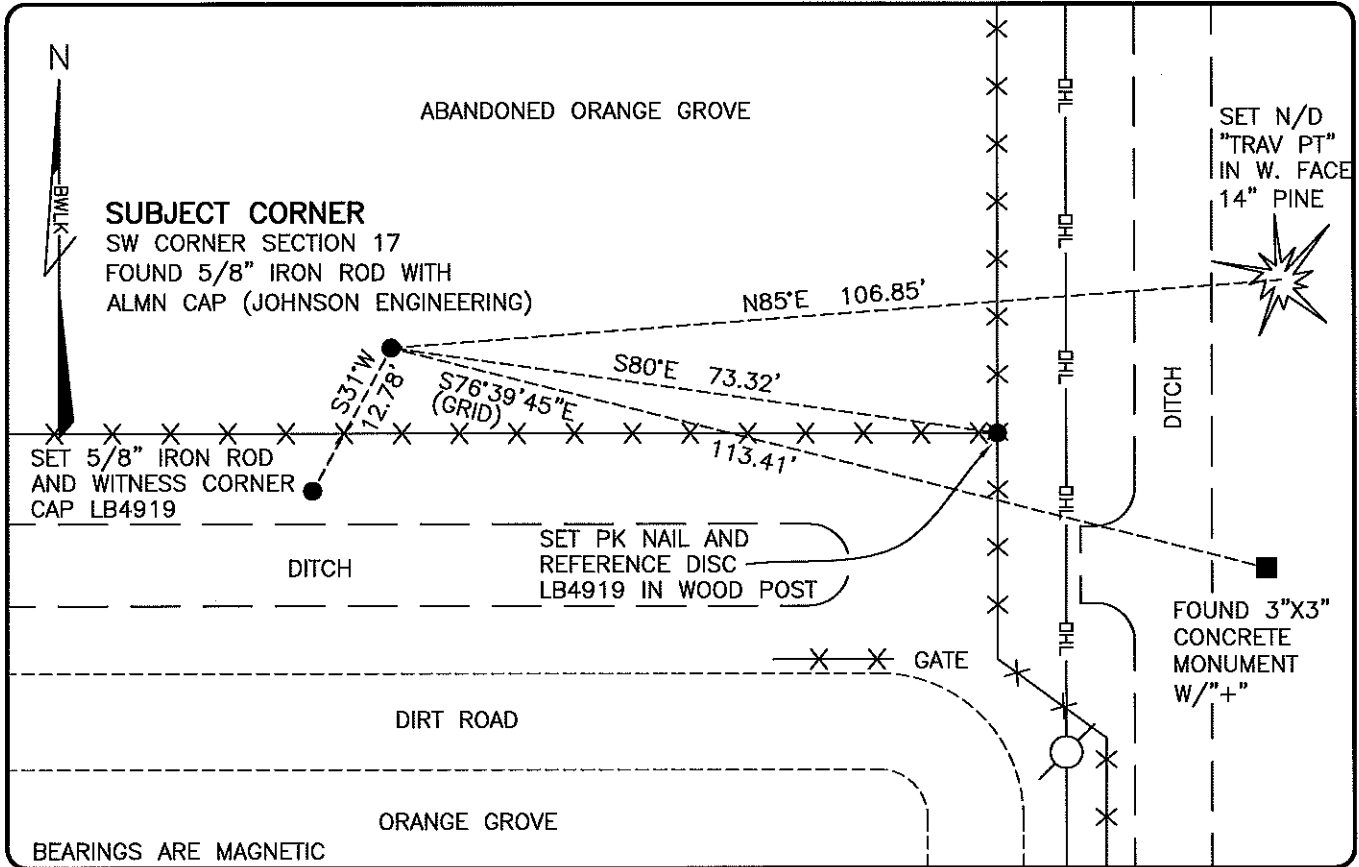


LAND CORNER RECORD

**PUBLIC WORKS
LEE COUNTY, FLORIDA**

Address - 1500 Monroe St., Ft. Myers, Fla. 33901

Phone : (239) 479-8900



BEARINGS ARE MAGNETIC

COMMENTS:

FOUND SUBJECT CORNER IN HARMONY WITH A MULTIPLE SECTION SURVEY PREPARED BY JOHNSON ENGINEERING DATED 1987 SHOWING THIS CORNER BEING LOST AND RESET BY DOUBLE PROPORTION MEASURE AFTER EXTENSIVE SEARCH. FIELD LOCATED CORNER WAS FOUND TO BE IN HARMONY WITH DIMENSIONS SHOWN ON SAID SURVEY. SEE QUIT CLAIM DESCRIPTION IN O.R. 2061 PG.3137 AND CITY OF BONITA SPRINGS ANNEXATION DESCRIPTION IN ORDINANCE 03-09.

HORIZONTAL POSITION INFORMATION

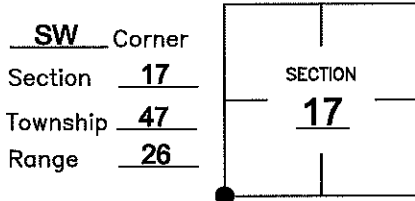
Florida West Zone, NAD 1983(2007 Adjustment)

Northing(ft) 742163.05 Easting(ft) 741439.55

Latitude 26°22'30.8619" Longitude 81°44'22.3640"

Scale Factor 0.99995

CORNER DESCRIPTION



EXISTING CERTIFIED CORNER RECORDS

Document No.	Date
<u>26264</u>	<u>7-20-87</u>

The above documents are based on FDEP Bureau of Surveying and Mapping Record Information.

I hereby certify the monument and accessories shown above were field located on 2-11-10.

Scott C. Whitaker
SCOTT C. WHITAKER
 Professional Surveyor and Mapper
 Florida Certificate No. 4324
 Date Signed 4/26/10

BEAN, WHITAKER, LUTZ & KAREH, INC. (LB 4919)
 13041 McGregor Boulevard
 Fort Myers, Florida 33919-5910
 Phone: (239) 481-1331

POINT NO. 15042

BLM REFERENCE NO. T47SR26E200400