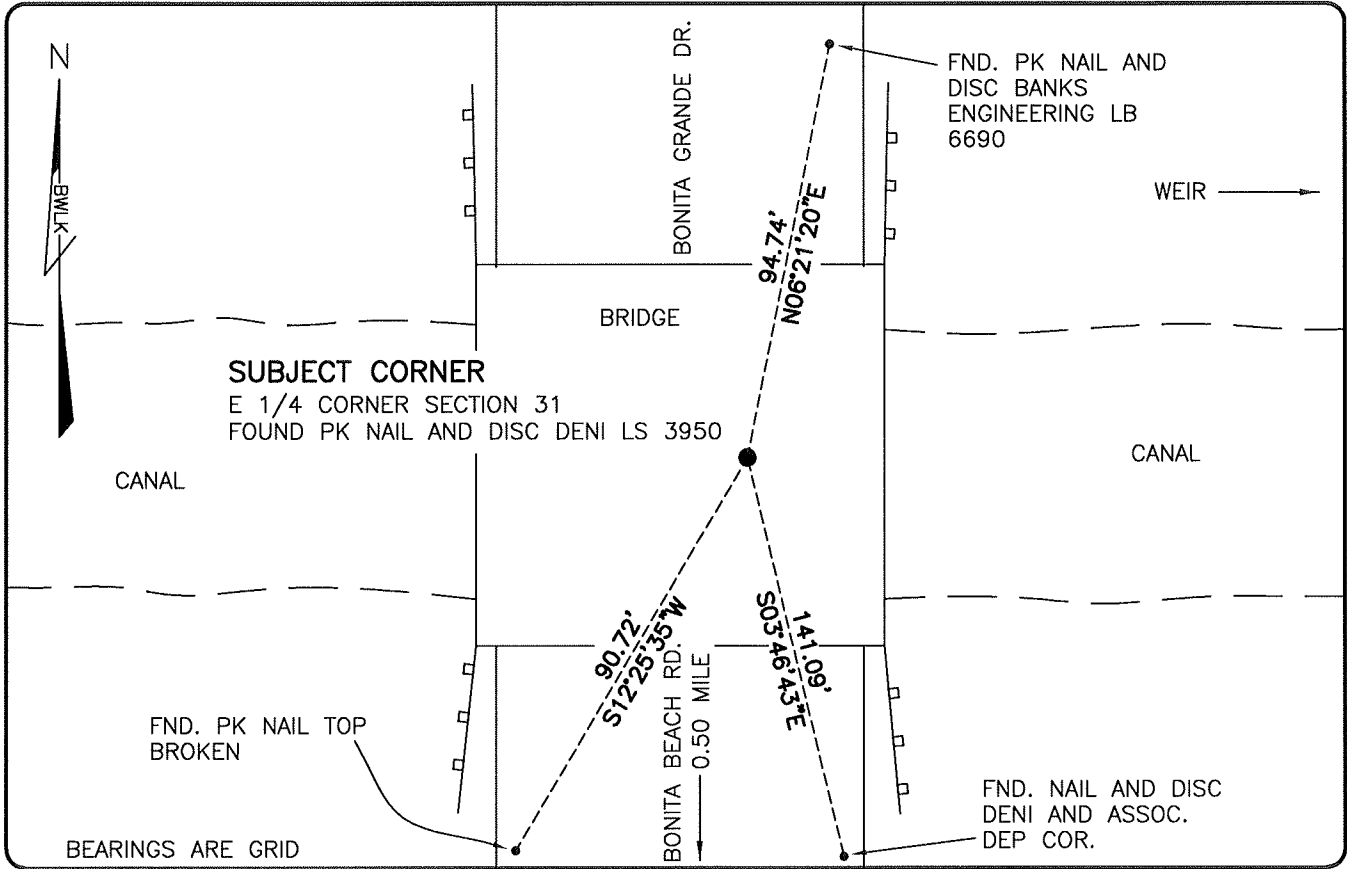


**LAND CORNER RECORD**

**PUBLIC WORKS  
LEE COUNTY, FLORIDA**

Address - 1500 Monroe St., Ft. Myers, Fla. 33901

Phone : (239) 479-8900

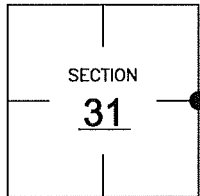


**COMMENTS:**

FOUND SUBJECT CORNER IN HARMONY WITH HISTORICAL RECORDS. A MULTIPLE SECTION SURVEY PREPARED BY JOHN AMEY IN 1961 SHOWS CALCULATED DIMENSIONS TO THIS CORNER, ALTHOUGH A MONUMENT WAS NOT SET AT THAT TIME. FIELD LOCATED CORNER WAS FOUND TO BE IN HARMONY WITH DIMENSIONS SHOWN ON 1961 SURVEY.

**CORNER DESCRIPTION**

E1/4 Corner  
Section 31  
Township 47  
Range 26



**HORIZONTAL POSITION INFORMATION**

Florida West Zone, NAD 1983(2007 Adjustment)

Northing(ft) 728947.45 Easting(ft) 741786.39

Latitude 26°20'19.9633" Longitude 81°44'18.8447"

Scale Factor 0.99995

**EXISTING CERTIFIED CORNER RECORDS**

Document No.	Date
<u>81784</u>	<u>10-15-03</u>
<u>69227</u>	<u>9-28-00</u>
<u>64262</u>	<u>10-17-97</u>
<u>40087</u>	<u>8-23-91</u>

The above documents are based on FDEP Bureau of Surveying and Mapping Record Information.

I hereby certify the monument and accessories shown above were field located on 1-13-09.

*Scott C. Whitaker*  
**SCOTT C. WHITAKER**  
Professional Surveyor and Mapper  
Florida Certificate No. 4324  
Date Signed 2-12-09

BEAN, WHITAKER, LUTZ & KAREH, INC. (LB 4919)  
13041 McGregor Boulevard  
Fort Myers, Florida 33919-5910  
Phone: (239) 481-1331

POINT NO. 15018

BLM REFERENCE NO. T47SR26E200140