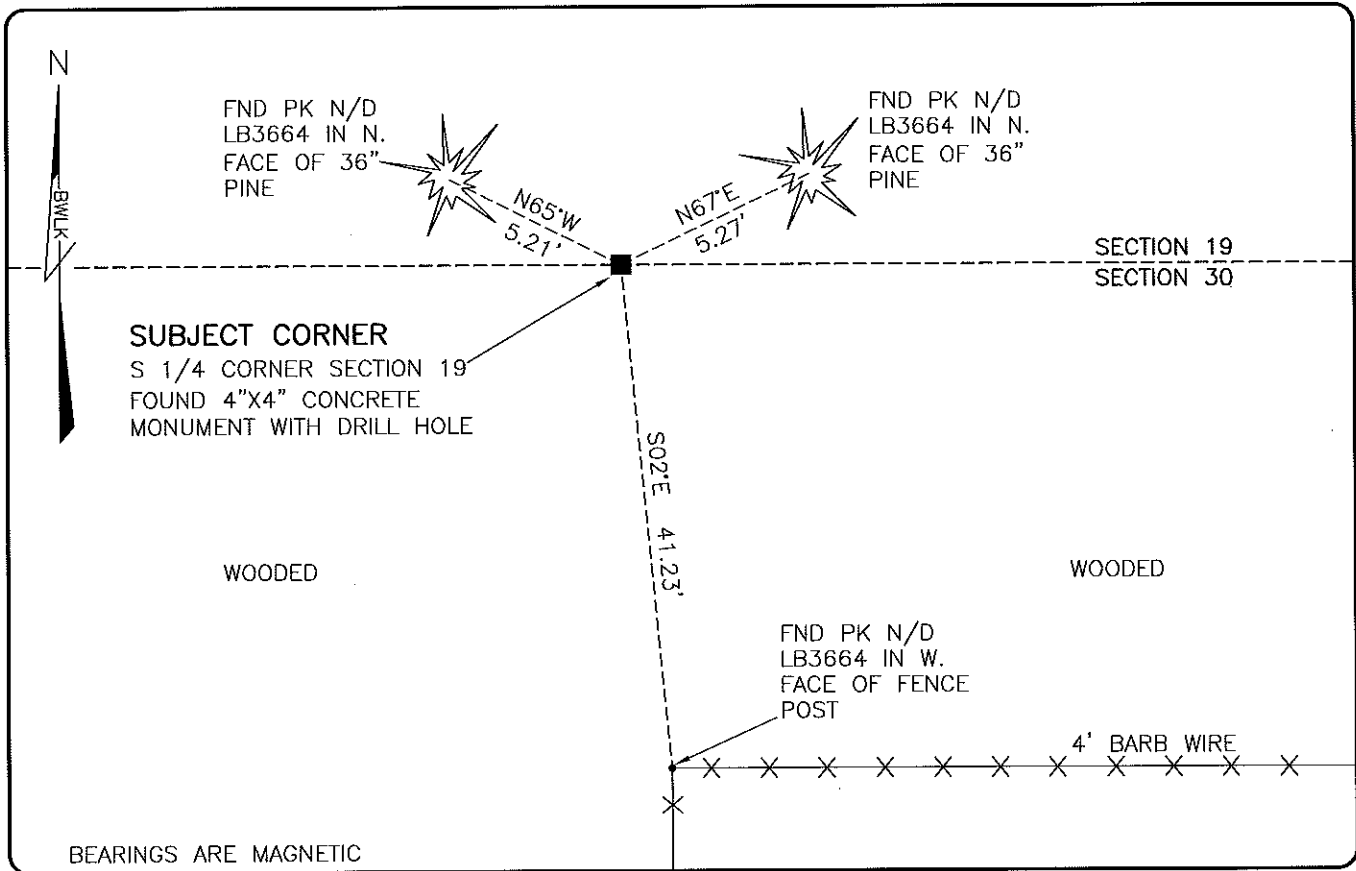


**LAND CORNER RECORD**

**PUBLIC WORKS  
LEE COUNTY, FLORIDA**

Address - 1500 Monroe St., Ft. Myers, Fla. 33901

Phone : (239) 479-8900



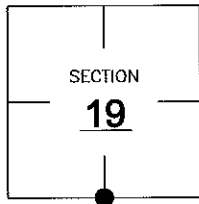
BEARINGS ARE MAGNETIC

**COMMENTS:**

FOUND SUBJECT CORNER IN HARMONY WITH HISTORICAL RECORDS AND CCR'S ON FILE.

**CORNER DESCRIPTION**

**S 1/4** Corner  
Section **19**  
Township **47**  
Range **26**



**HORIZONTAL POSITION INFORMATION**

Florida West Zone, NAD 1983(2007 Adjustment)  
 Northing(ft) 736810.50 Easting(ft) 739006.54  
 Latitude 26°21'37.8965" Longitude 81°44'49.2319"  
 Scale Factor 0.99995

**EXISTING CERTIFIED CORNER RECORDS**

Document No.	Date
<u>81777</u>	<u>10-17-03</u>
<u>64253</u>	<u>4-8-98</u>
<u>40081</u>	<u>8-23-91</u>
<u>15285</u>	<u>10-25-82</u>

The above documents are based on FDEP Bureau of Surveying and Mapping Record Information.

I hereby certify the monument and accessories shown above were field located on 3-4-10

*Scott C. Whitaker*  
**SCOTT C. WHITAKER**  
 Professional Surveyor and Mapper  
 Florida Certificate No. 4324  
 Date Signed 4/26/10

BEAN, WHITAKER, LUTZ & KAREH, INC. (LB 4919)  
 13041 McGregor Boulevard  
 Fort Myers, Florida 33919-5910  
 Phone: (239) 481-1331

POINT NO. 15053

BLM REFERENCE NO. T47SR26E140300