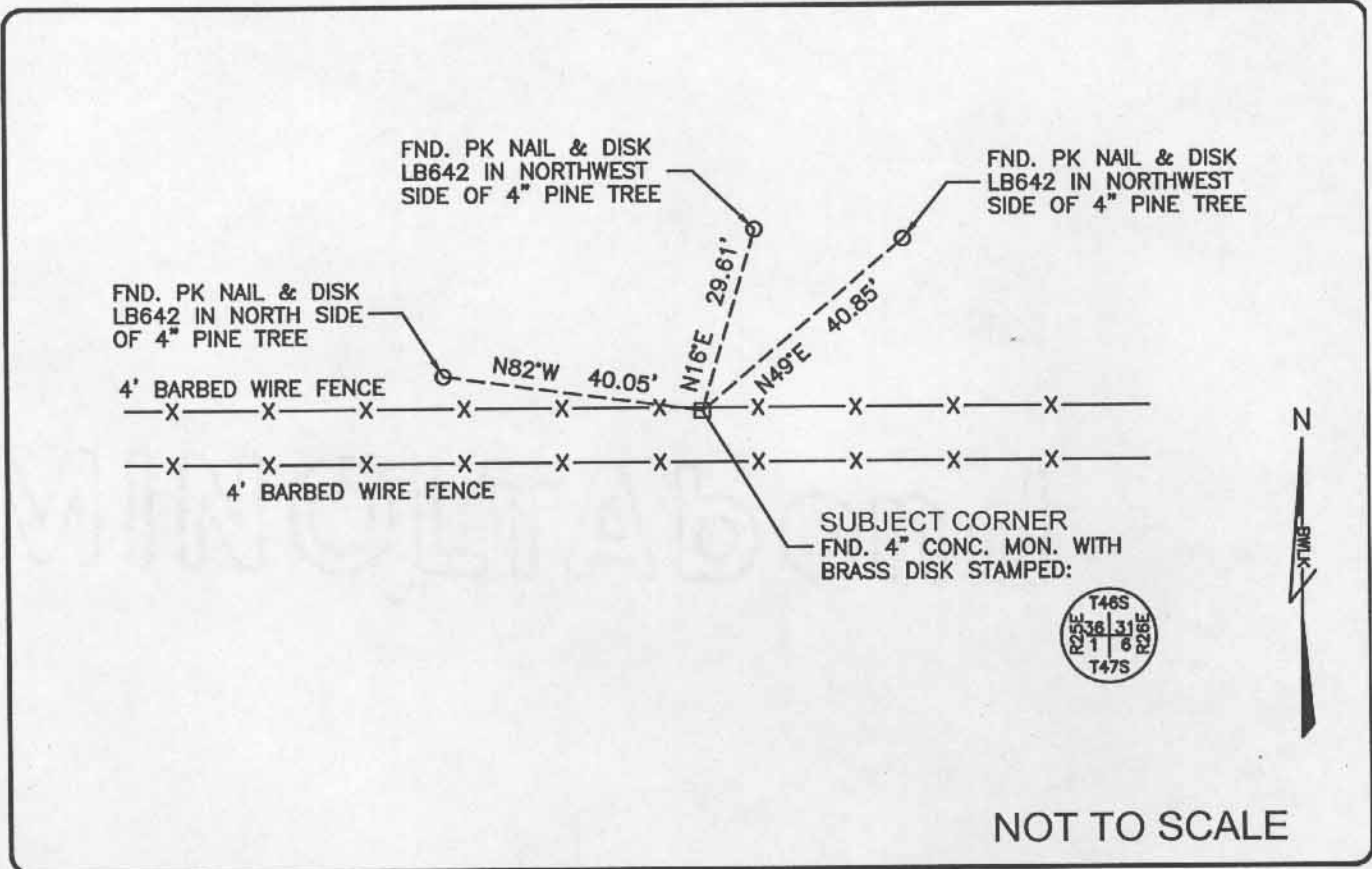


LAND CORNER RECORD

PUBLIC WORKS
LEE COUNTY, FLORIDA

Address - 1500 Monroe St., Ft. Myers, Fla. 33901

Phone : (239) 479-8900

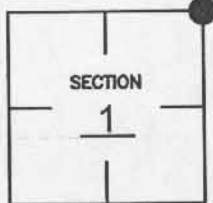


COMMENTS:

Recovered corner and 3 references as described on CCR #81648.

CORNER DESCRIPTION

NE Corner
Section 1
Township 47
Range 25



HORIZONTAL POSITION INFORMATION

Florida West Zone, NAD 1983(1990 Adjustment)

Northing(ft) 758567.141 Easting(ft) 735937.529

Latitude 26°25'13.43924" N Longitude 81°45'22.52110" W

Scale Factor 0.999948473

EXISTING CERTIFIED CORNER RECORDS

Document No.	Date
<u>35247</u>	<u>MAY, 1990</u>
<u>81648</u>	<u>5-12-04</u>

The above documents are based on FDEP Bureau of Surveying and Mapping Record Information.

I hereby certify the monument and accessories shown above were field located on 8-17-04.

[Signature]

JAMES R. COLEMAN
Registered Land Surveyor
Florida Certificate No. 3205
Date Signed 8-26-04

BEAN, WHITAKER, LUTZ & KAREH, INC. (LB 4919)
13041 McGregor Boulevard
Fort Myers, Florida 33919-5910
Phone: (239) 481-1331

COORDINATE NO. 8374

BLM REFERENCE NO. T47SR25E700700