

# CERTIFIED CORNER RECORD

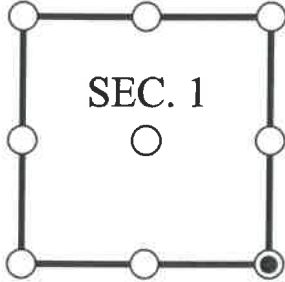
DOC. # \_\_\_\_\_

SE Corner of Section 1, Township 47, Range 25, LEE County

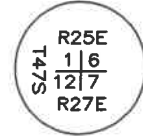
- GLO CORNER (PROVEN)  
  LAND GRANT CORNER  
  HISTORIC CORNER  
  OTHER CORNER

CORNER DESCRIPTION:      MONUMENT DESCRIPTION (EVIDENCE FOUND OR METHOD USED TO SET)

Depict corner with



FOUND 4x4" CONCRETE MONUMENT POST WITH STAMPED DISK CONSISTENT WITH CORNER RECORD 081650, STAMPED AS SHOWN.



HORIZONTAL POSITION INFORMATION ( if determined ):

Latitude: N26° 24' 21.0991"      Longitude: W81° 45' 21.3323"

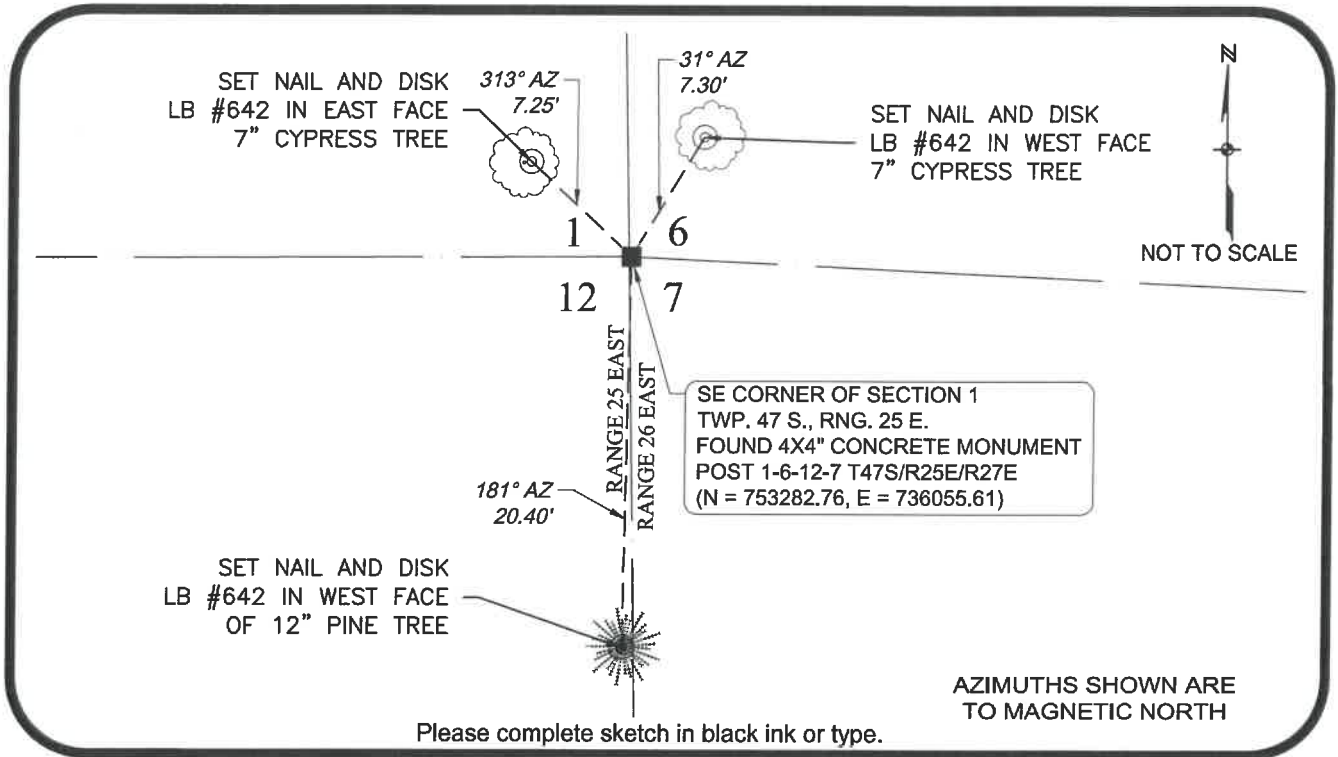
Y(NORTHING-Ft.) 753282.761      X(EASTING-Ft.) 736055.613      Zone FL West

Horizontal datum: NAD83(2011)

Source: \_\_\_\_\_

Determined by: GPS (VRS)

- EXISTING  
 OBLITERATED  
 LOST



**SURVEYORS CERTIFICATE:**

I certify the monument and accessories indicated above were field located on 10/05/2017

\_\_\_\_\_  
 SIGNATURE      4912  
 Johnson Engineering, Inc.      PSM NO.  
 FIRM OR AGENCY      642  
 2122 Johnson Street      LB NO.  
 ADDRESS  
 Fort Myers      Florida      33901  
 CITY      STATE      ZIP  
 866-367-4400  
 PHONE NUMBER      DATE

SEND ORIGINAL TO:  
 Department of Environmental Protection  
 Bureau of Surveying and Mapping  
 3900 Commonwealth Boulevard  
 Mail Station 105  
 Tallahassee, Florida 32399

NOTE: Do not make changes to this form

D.E.P. USE ONLY

Processed: \_\_\_\_\_  
 B.L.M. - I.D. \_\_\_\_\_  
 QUAD - I.D. \_\_\_\_\_

EMBOSSSED SEAL OVER SIGNATURE