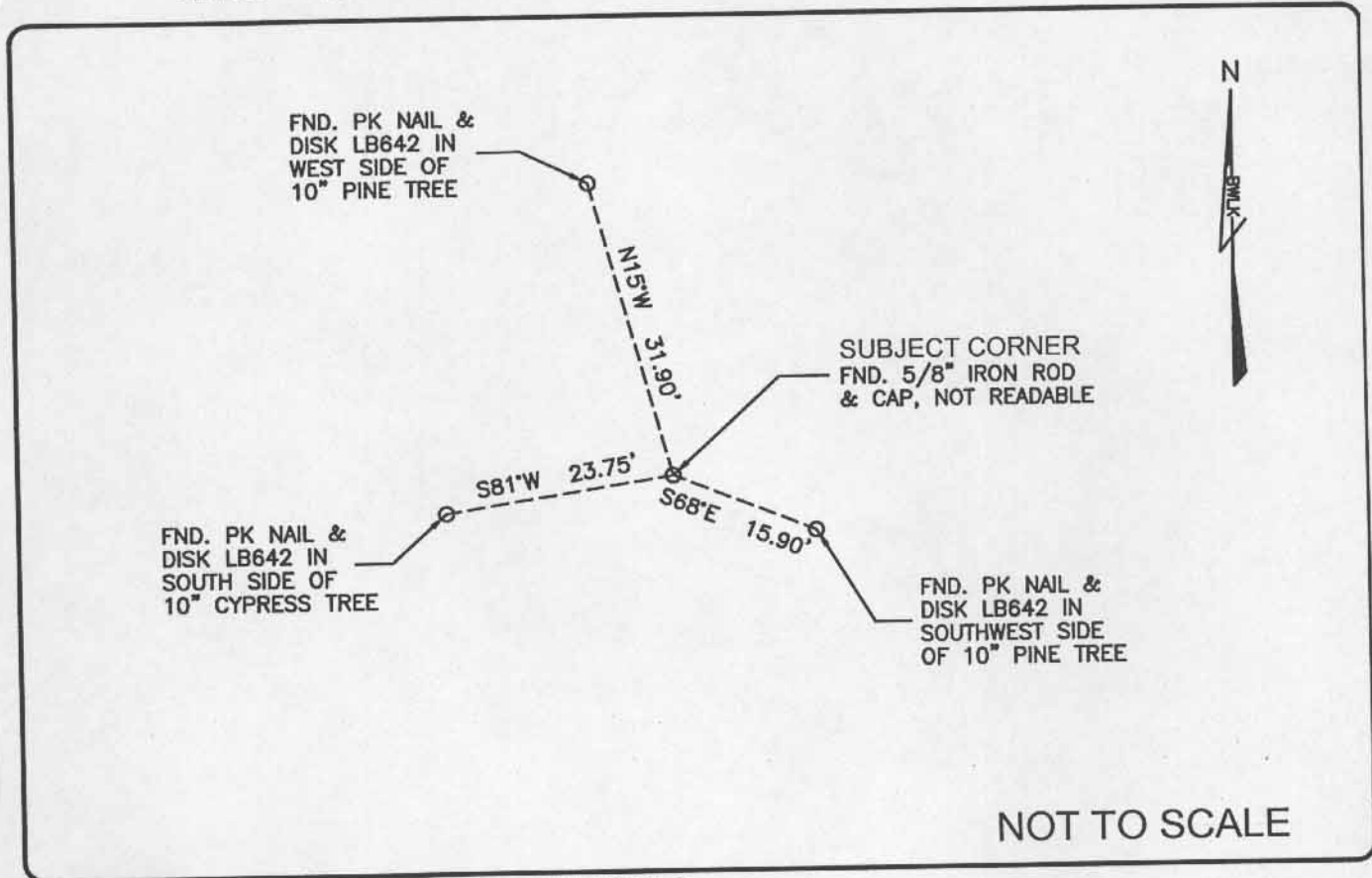


LAND CORNER RECORD

PUBLIC WORKS  
LEE COUNTY, FLORIDA

Address - 1500 Monroe St., Ft. Myers, Fla. 33901

Phone : (239) 479-8900

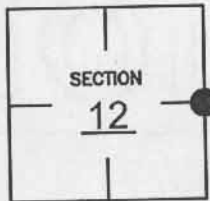


COMMENTS:

Recovered corner and 3 references as described on CCR #81743.

CORNER DESCRIPTION

E 1/4 Corner  
Section 12  
Township 47  
Range 25



HORIZONTAL POSITION INFORMATION

Florida West Zone, NAD 1983(1990 Adjustment)

Northing(ft) 750312.613 Easting(ft) 736111.476

Latitude 26°23'51.68089" N Longitude 81°45'20.77985" W

Scale Factor 0.999948505

EXISTING CERTIFIED CORNER RECORDS

Document No.	Date
81743	5-17-04

The above documents are based on FDEP Bureau of Surveying and Mapping Record Information.

I hereby certify the monument and accessories shown above were field located on 8-11-04.

*[Signature]*

JAMES R. COLEMAN  
Registered Land Surveyor  
Florida Certificate No. 3205  
Date Signed 8-26-04

BEAN, WHITAKER, LUTZ & KAREH, INC. (LB 4919)  
13041 McGregor Boulevard  
Fort Myers, Florida 33919-5910  
Phone: (239) 481-1331

COORDINATE NO. 8377

BLM REFERENCE NO. T47SR25E700540