

FLORIDA DEPARTMENT OF ENVIRONMENTAL PROTECTION CERTIFIED CORNER RECORD

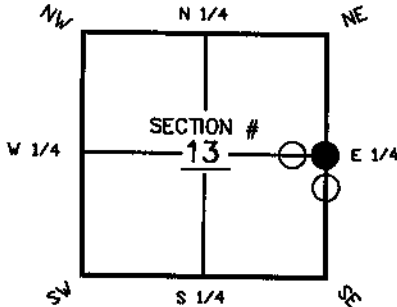
DOC. # 083759

L-25

CORNER DESCRIPTION: MONUMENTATION DESCRIPTION (EVIDENCE FOUND OR METHOD TO SET)

Depict corner with

LARGE BANYAN TREE AT EAST 1/4 CORNER
CORNER NOT FOUND OR SET

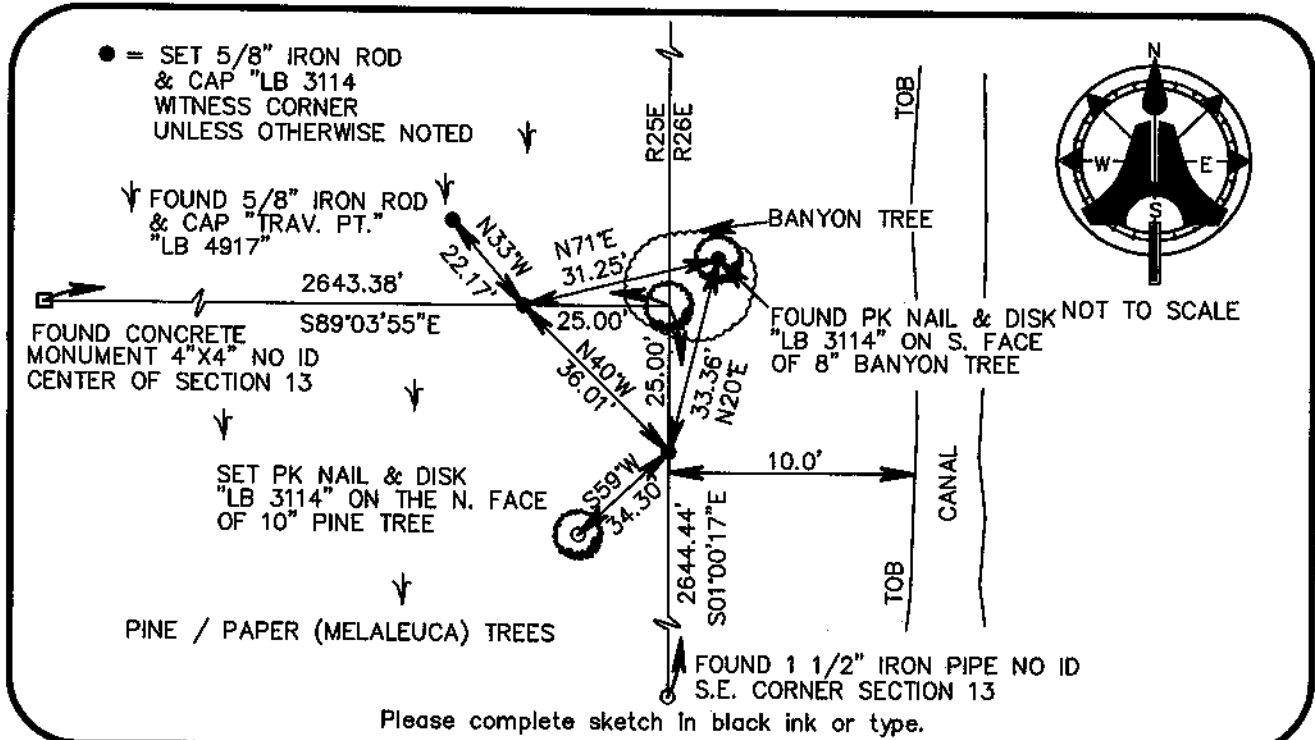


SET 2 WITNESS CORNERS
25.00' WEST ON LINE AND
25.00' SOUTH ON LINE

HORIZONTAL POSITION INFORMATION (if determined)

Latitude 26° 22' 51.8856" N Longitude 81° 16' 41.8883" W
 Y(NORTHING-Ft.) 744698.32 X(EASTING -Ft.) 736213.88 Zone FL WEST
 Convergence 00° 19' 14.2" Scale factor 1.00000515
 Coordinate determination (circle one): Field traverse GPS
 Horizontal datum (circle one): NAD27 NAD83(1986) NAD83(1990) other (explain)
 Accuracy (circle one): 1st 2nd 3rd other

E 1/4 corner of Section 13
 Twp. 47 S, Rge 25 E
 Tallahassee Base Meridian,
LEE County(s), Florida



SURVEYORS CERTIFICATE:

I certify the monument and accessories indicated above were field located on NOVEMBER 11, 2004

[Signature]
 SIGNATURE
5688
 PSM NO.
AIM ENGINEERING & SURVEYING, INC. LB 3114
 FIRM OR AGENCY LB NO.
5300 LEE BOULEVARD
 ADDRESS
LEHIGH ACRES, STATE OF FLORIDA 33971-1026
 CITY STATE ZIP
(239) 332-4569 Date 11/31/04
 PHONE NUMBER DATE
EMBOSSSED SEAL OVER SIGNATURE

SEND ORIGINAL TO:
 Department of Environmental Protection
 Bureau of Surveying and Mapping
 3900 Commonwealth Boulevard
 Mail Station 105
 Tallahassee, Florida 32399

D.E.P. USE ONLY
 Processed: 2-8-05 S.M.
 B.L.M. - I.D. 700440
 QUAD - I.D. 2015 Estero