

# CERTIFIED CORNER RECORD

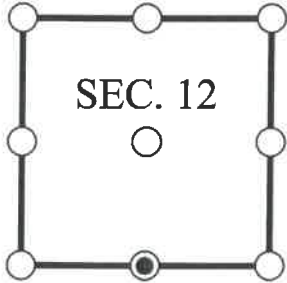
DOC. # \_\_\_\_\_

S 1/4 Corner of Section 12, Township 47, Range 25, LEE County

- GLO CORNER (PROVEN)  
  LAND GRANT CORNER  
  HISTORIC CORNER  
  OTHER CORNER

CORNER DESCRIPTION:                      MONUMENT DESCRIPTION (EVIDENCE FOUND OR METHOD USED TO SET)

Depict corner with



FOUND 4x4" CONCRETE MONUMENT POST WITH BROKEN TOP, CONSISTENT WITH CORNER RECORD 081747.

HORIZONTAL POSITION INFORMATION ( if determined ):

Latitude: N26° 23' 21.7615"                      Longitude: W81° 45' 49.2920"

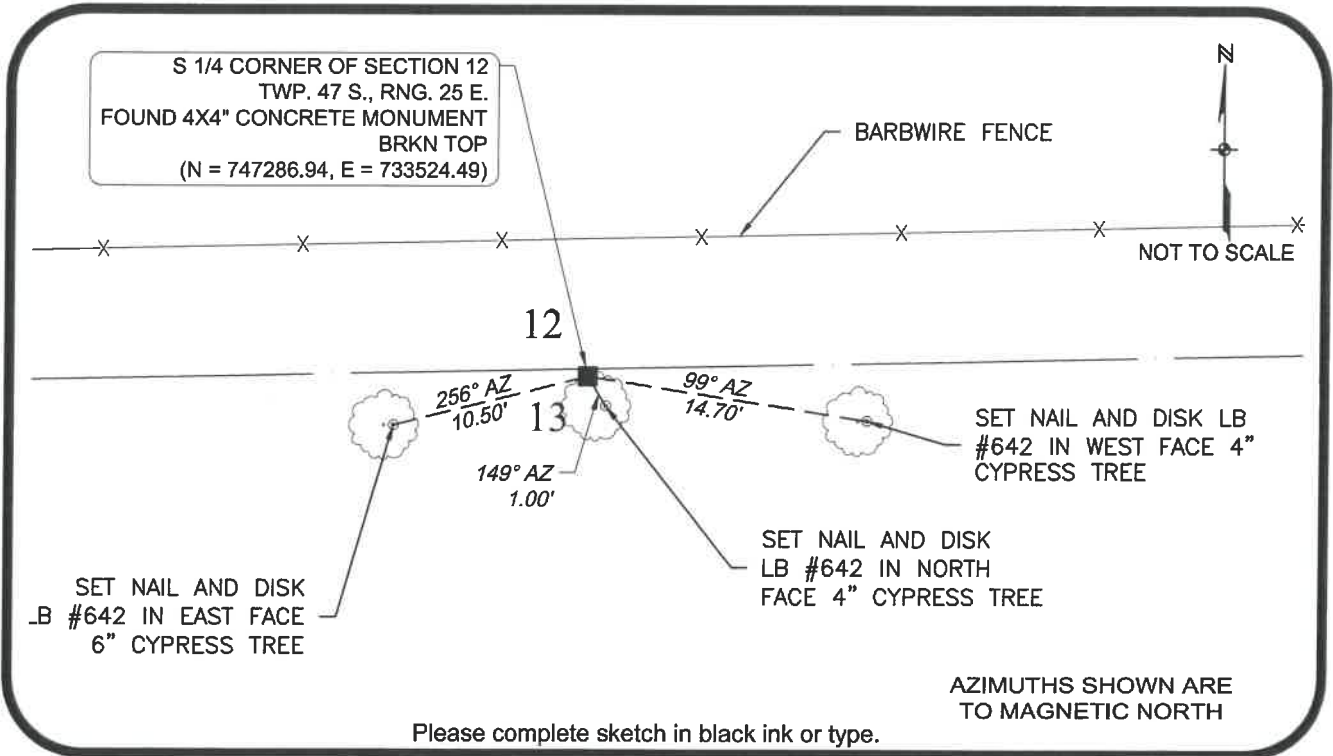
Y(NORTHING-Ft.) 747286.937    X(EASTING-Ft.) 733524.486    Zone FL West

Horizontal datum: NAD83(2011)

Source: \_\_\_\_\_

Determined by: GPS (VRS)

- EXISTING  
 OBLITERATED  
 LOST



SURVEYORS CERTIFICATE:

I certify the monument and accessories indicated above were field located on 10/07/2017

\_\_\_\_\_ 4912  
SIGNATURE PSM NO.  
 Johnson Engineering, Inc. 642  
FIRM OR AGENCY LB NO.  
 2122 Johnson Street  
ADDRESS  
 Fort Myers Florida 33901  
CITY STATE ZIP  
 866-367-4400  
PHONE NUMBER DATE

SEND ORIGINAL TO:  
 Department of Environmental Protection  
 Bureau of Surveying and Mapping  
 3900 Commonwealth Boulevard  
 Mail Station 105  
 Tallahassee, Florida 32399

**NOTE: Do not make changes to this form**

D.E.P. USE ONLY

Processed: \_\_\_\_\_

B.L.M. - I.D. \_\_\_\_\_

QUAD - I.D. \_\_\_\_\_

**EMBOSSSED SEAL OVER SIGNATURE**