

FLORIDA DEPARTMENT OF ENVIRONMENTAL PROTECTION CERTIFIED CORNER RECORD

083763

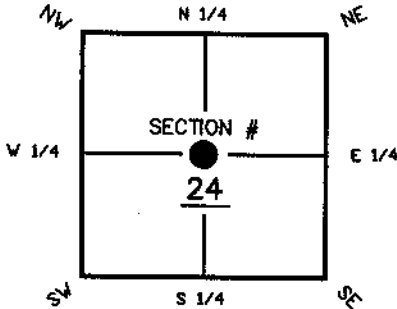
DOC. # _____

P-23

CORNER DESCRIPTION: MONUMENTATION DESCRIPTION (EVIDENCE FOUND OR METHOD TO SET)

Depict corner with

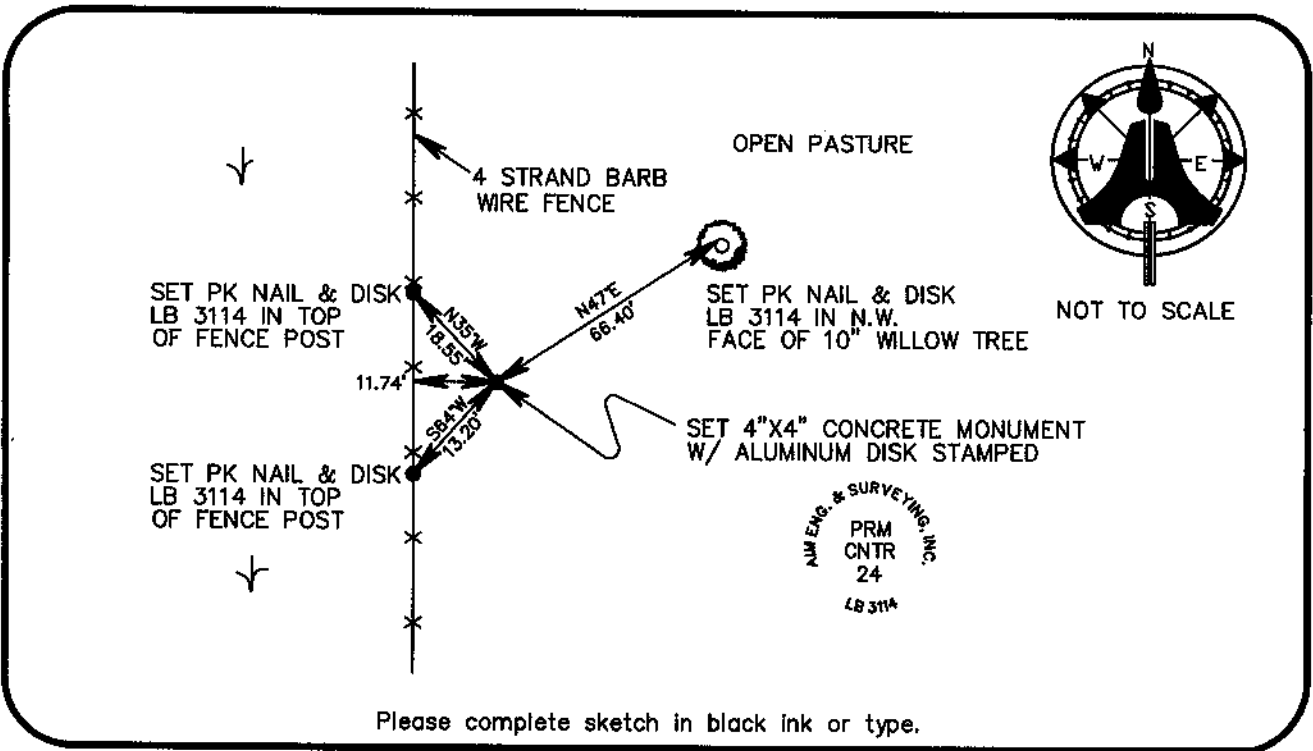
SET 4"X4" CONCRETE MONUMENT
W/ ALUMINUM DISK STAMPED



CENT. corner of Section 24
Twp 47 S, Rge 25 E
Tallahassee Base Meridian,
LEE County(s), Florida

HORIZONTAL POSITION INFORMATION (if determined):

Latitude 26° 22' 05.7157" N Longitude 81° 45' 47.9278" W
Y(NORTHING-Ft.) 739609.15 X(ESTING -Ft.) 733862.63 Zone FL WEST
Convergence 00°08'18.4" Scale factor 0.99994806
Coordinate determination (circle one): Field traverse GPS
Horizontal datum (circle one): NAD27 NAD83(1986) NAD83(1990) other (explain) _____
Accuracy (circle one): 1st 2nd 3rd other _____



Please complete sketch in black ink or type.

SURVEYORS CERTIFICATE:

I certify the monument and accessories indicated above were field located on FEBRUARY 11, 2004

[Signature]
5688
AIM ENGINEERING & SURVEYING, INC. PSM NO. LB 3114
5300 LEE BOULEVARD
LEHIGH ACRES, FLORIDA 33971-1026
(239) 332-4569
EMBOSSSED SEAL OVER SIGNATURE

SEND ORIGINAL TO:
Department of Environmental Protection
Bureau of Surveying and Mapping
3900 Commonwealth Boulevard
Mail Station 105
Tallahassee, Florida 32399

D.E.P. USE ONLY
Processed: 2-8-05 S.M.
B.L.M. - I.D. 640340
QUAD - I.D. 1915 Bonita Springs