

CERTIFIED CORNER RECORD

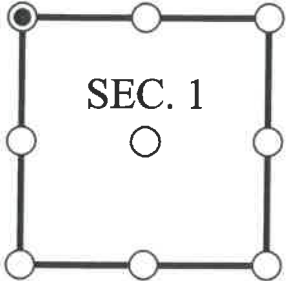
DOC. # _____

NW Corner of Section 1, Township 47, Range 25, LEE County

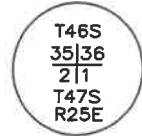
- GLO CORNER (PROVEN)
 LAND GRANT CORNER
 HISTORIC CORNER
 OTHER CORNER

CORNER DESCRIPTION: MONUMENT DESCRIPTION (EVIDENCE FOUND OR METHOD USED TO SET)

Depict corner with



FOUND 4x4" CONCRETE MONUMENT POST WITH STAMPED DISK CONSISTENT WITH CORNER RECORD 079091, STAMPED AS SHOWN.



HORIZONTAL POSITION INFORMATION (if determined):

Latitude: N26° 25' 13.8571" Longitude: W81° 46' 20.4735"

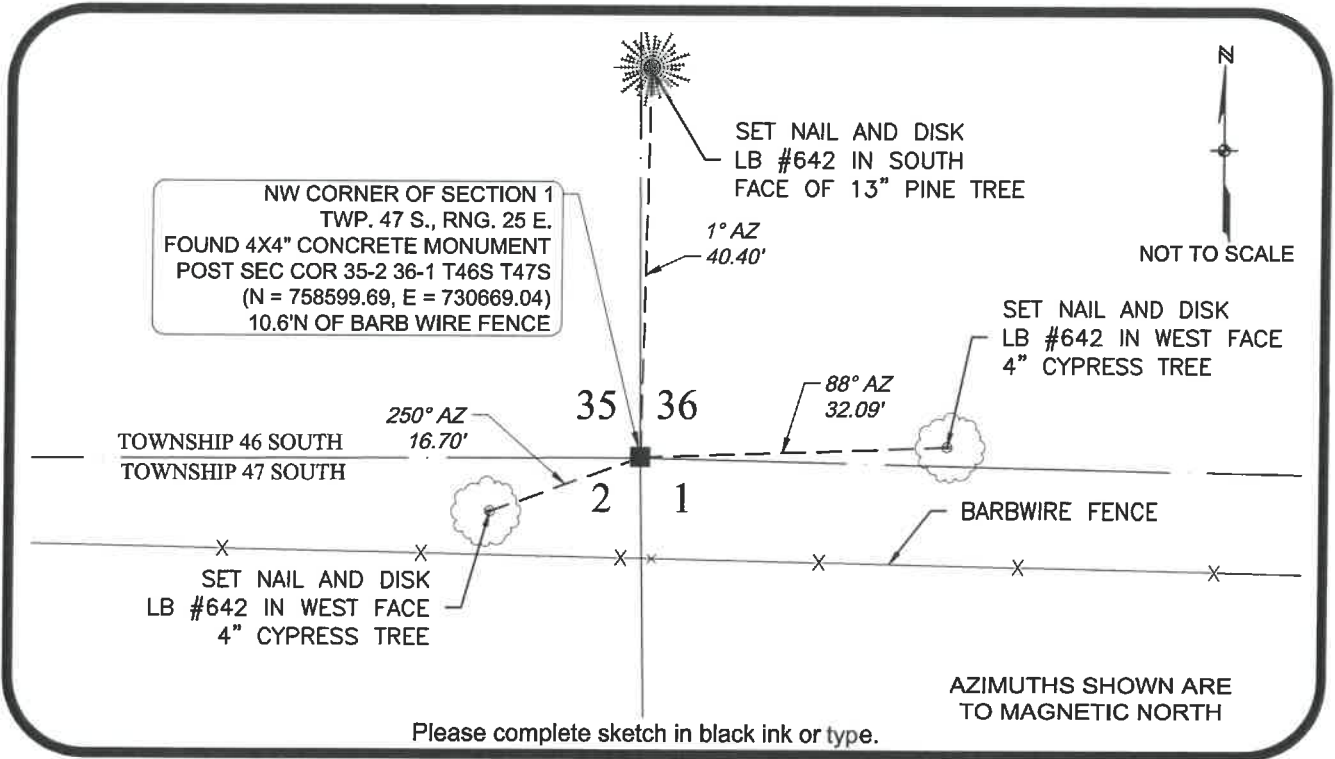
Y(NORTHING-Ft.) 758599.687 X(EASTING-Ft.) 730669.036 Zone FL West

Horizontal datum: NAD83(2011)

Source: _____

Determined by: GPS (VRS)

- EXISTING
 OBLITERATED
 LOST



SURVEYORS CERTIFICATE:

I certify the monument and accessories indicated above were field located on 10/06/2017

SIGNATURE _____ 4912 PSM NO.
 Johnson Engineering, Inc. 642
 FIRM OR AGENCY LB NO.
 2122 Johnson Street
 ADDRESS
 Fort Myers Florida 33901
 CITY STATE ZIP
 866-367-4400
 PHONE NUMBER DATE

SEND ORIGINAL TO:
 Department of Environmental Protection
 Bureau of Surveying and Mapping
 3900 Commonwealth Boulevard
 Mail Station 105
 Tallahassee, Florida 32399

NOTE: Do not make changes to this form

D.E.P. USE ONLY

Processed: _____

B.L.M. - I.D. _____

QUAD - I.D. _____

EMBOSSSED SEAL OVER SIGNATURE