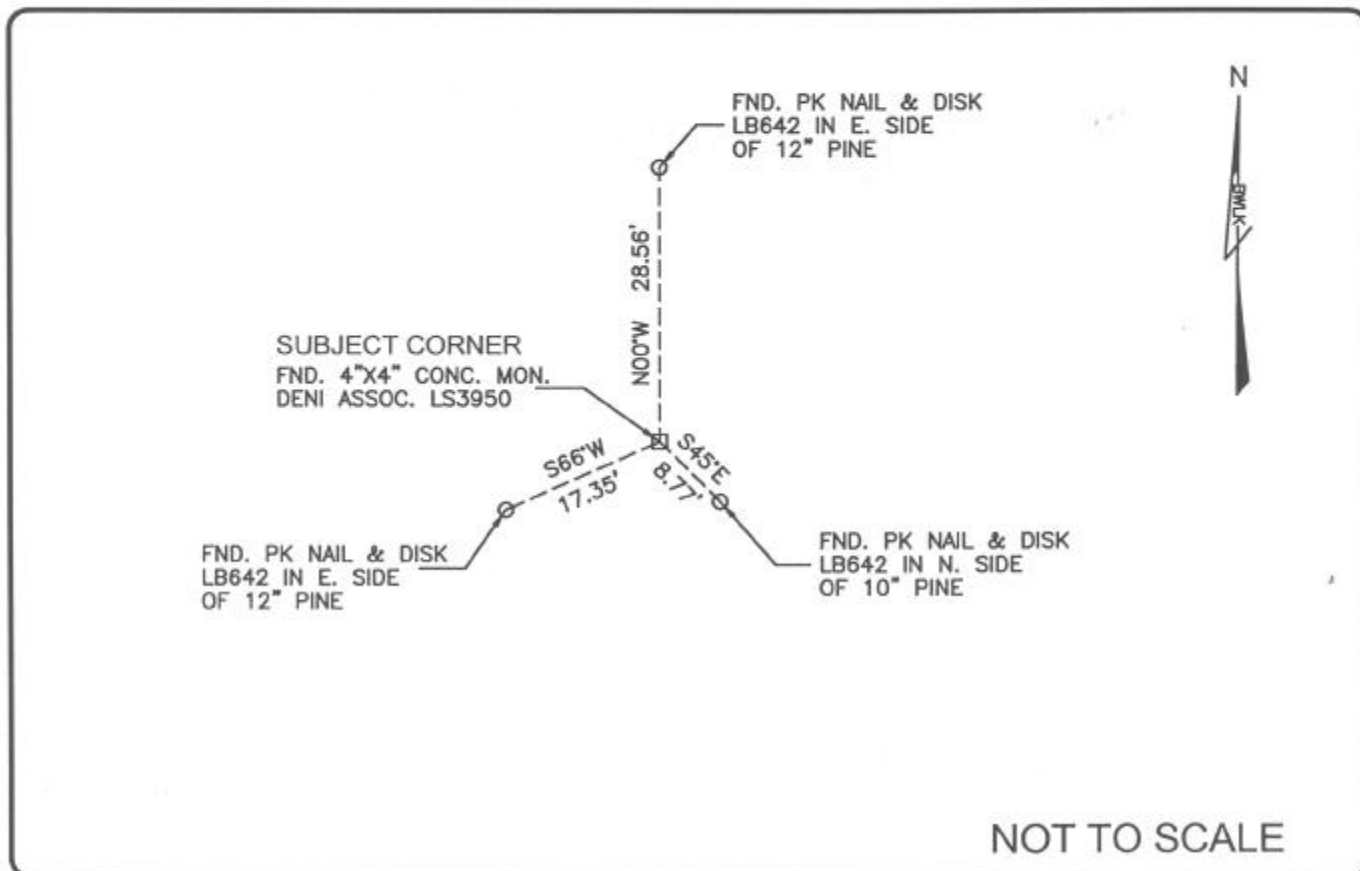


LAND CORNER RECORD

PUBLIC WORKS
LEE COUNTY, FLORIDA

Address - 1500 Monroe St., Ft. Myers, Fla. 33901

Phone : (239) 479-8900



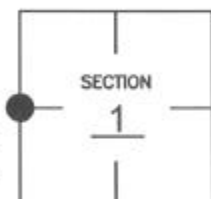
NOT TO SCALE

COMMENTS:

Recovered corner and 3 references as described on CCR #81652.

CORNER DESCRIPTION

W 1/4 Corner
Section 1
Township 47
Range 25



HORIZONTAL POSITION INFORMATION

Florida West Zone, NAD 1983(1990 Adjustment)
 Northing(ft) 755921.830 Easting(ft) 730726.095
 Latitude 26°24'47.33387" N Longitude 81°46'19.89793" W
 Scale Factor 0.999947550

EXISTING CERTIFIED CORNER RECORDS

Document No.	Date
<u>24950</u>	<u>2-02-87</u>
<u>81652</u>	<u>5-12-04</u>

The above documents are based on FDEP Bureau of Surveying and Mapping Record Information.

I hereby certify the monument and accessories shown above were field located on 7-06-04

James R. Coleman

JAMES R. COLEMAN
Registered Land Surveyor
Florida Certificate No. 3205
Date Signed 8-04-04

BEAN, WHITAKER, LUTZ & KAREH, INC. (LB 4919)
13041 McGregor Boulevard
Fort Myers, Florida 33919-5910
Phone: (239) 481-1331

COORDINATE NO. 8345

BLM REFERENCE NO. T47SR25E600640