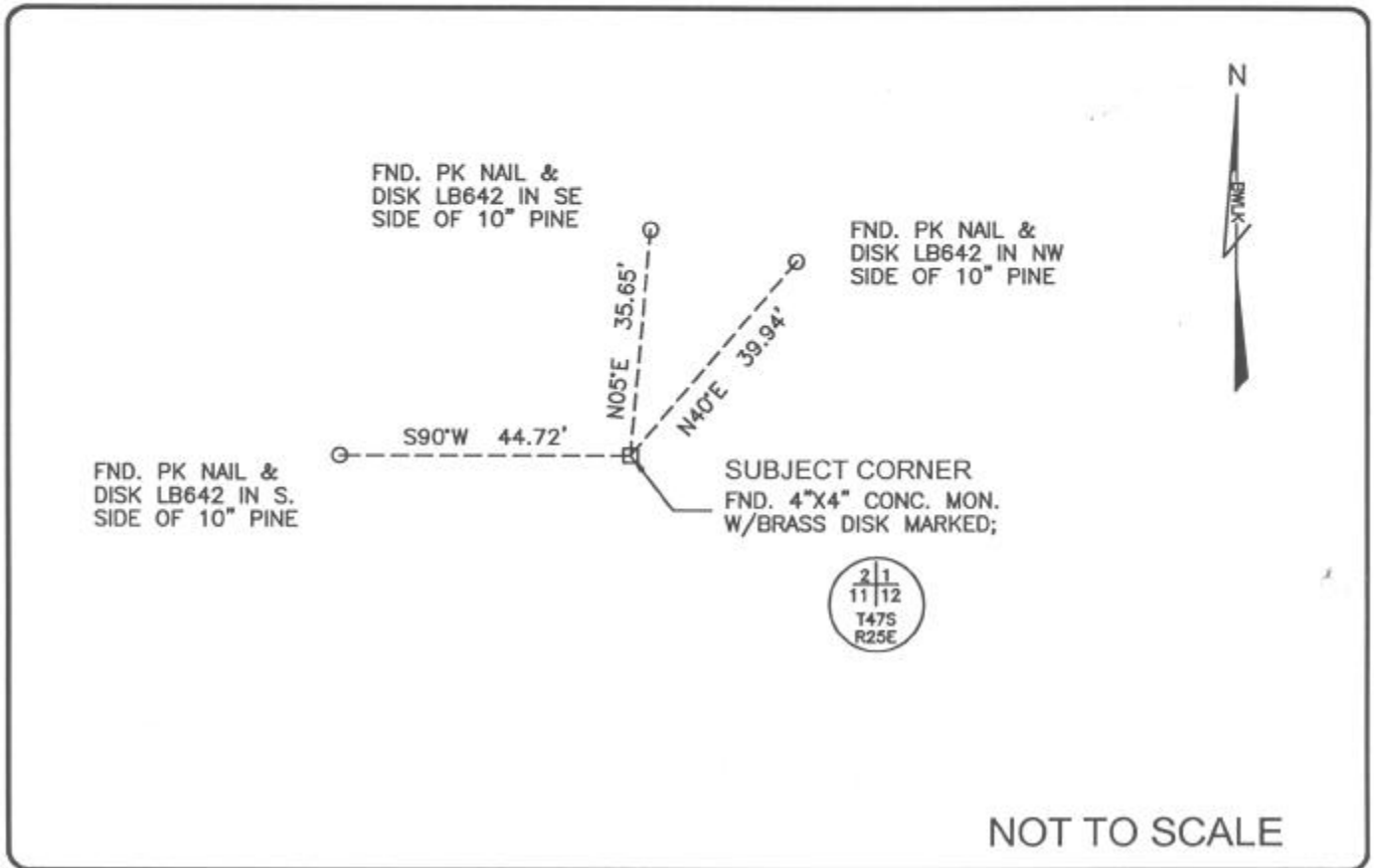


LAND CORNER RECORD

PUBLIC WORKS  
LEE COUNTY, FLORIDA

Address - 1500 Monroe St., Ft. Myers, Fla. 33901

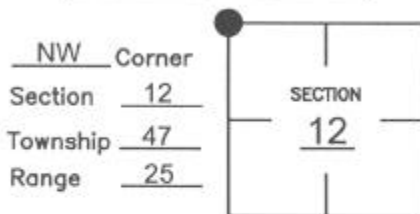
Phone : (239) 479-8900



COMMENTS:

Recovered corner as described on CCR #18964 and CCR #81742.  
Recovered 3 references described on CCR #81742.

CORNER DESCRIPTION



HORIZONTAL POSITION INFORMATION

Florida West Zone, NAD 1983(1990 Adjustment)

Northing(ft) 753267.143      Easting(ft) 730782.890

Latitude 26°24'21.04011" N      Longitude 81°46'19.32491" W

Scale Factor 0.999947560

EXISTING CERTIFIED CORNER RECORDS

Document No.	Date
18964	5-15-84
81742	5-17-04

The above documents are based on FDEP Bureau of Surveying and Mapping Record Information.

I hereby certify the monument and accessories shown above were field located on 7-06-04

*James R. Coleman*  
 JAMES R. COLEMAN  
 Registered Land Surveyor  
 Florida Certificate No. 3205  
 Date Signed 8-04-04

BEAN, WHITAKER, LUTZ & KAREH, INC. (LB 4919)  
 13041 McGregor Boulevard  
 Fort Myers, Florida 33919-5910  
 Phone: (239) 481-1331



COORDINATE NO. 8343

BLM REFERENCE NO. T47SR25E600600