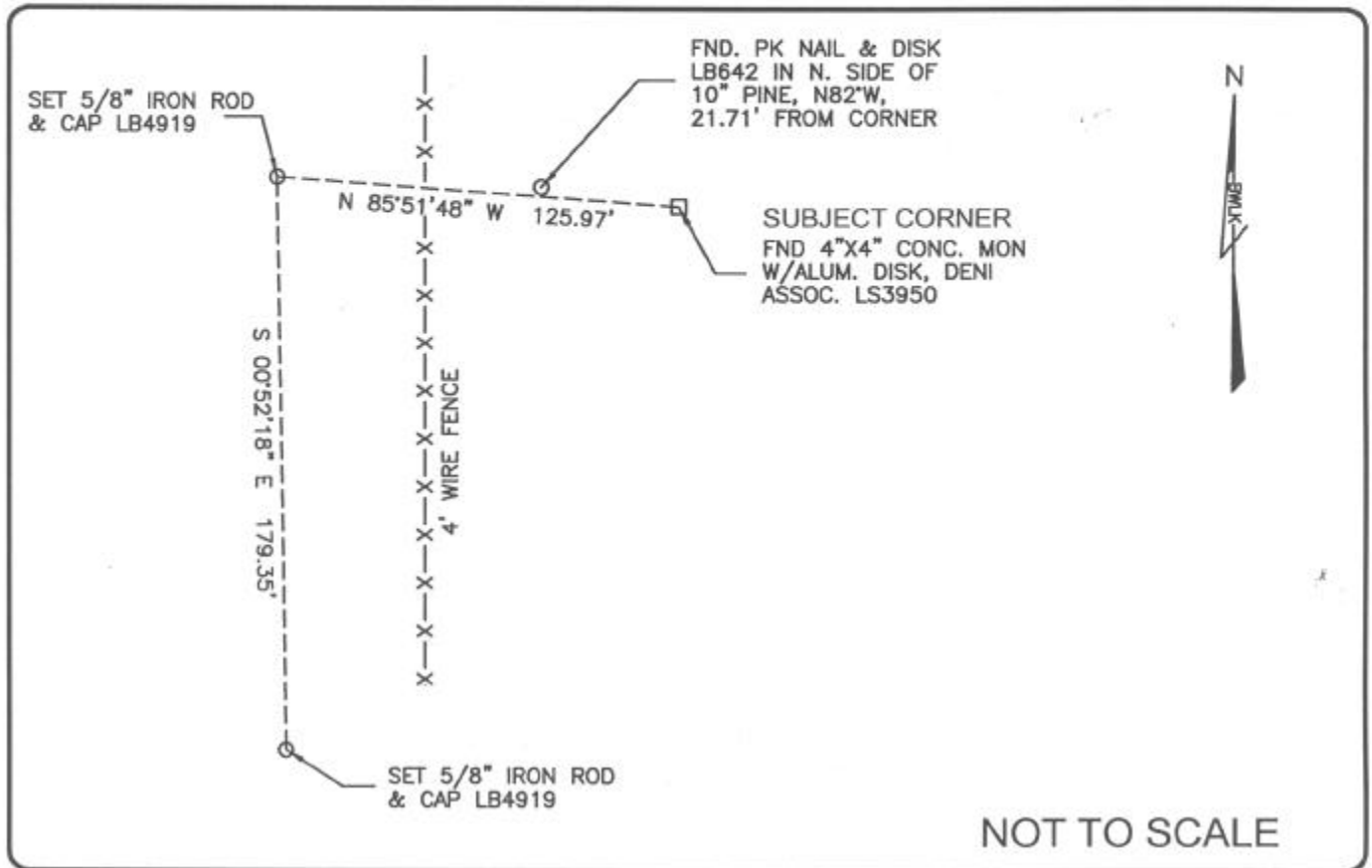


LAND CORNER RECORD

PUBLIC WORKS  
LEE COUNTY, FLORIDA

Address - 1500 Monroe St., Ft. Myers, Fla. 33901

Phone : (239) 479-8900



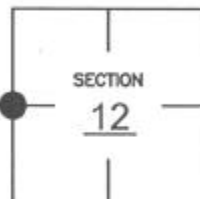
NOT TO SCALE

COMMENTS:

Recovered corner as described on CCR #24946 and CCR #81744 and 1 reference described on CCR #81744.

CORNER DESCRIPTION

W 1/4 Corner  
Section 12  
Township 47  
Range 25



HORIZONTAL POSITION INFORMATION

Florida West Zone, NAD 1983(1990 Adjustment)

Northing(ft) 750249.534 Easting(ft) 730831.603

Latitude 26°23'51.15235\" N Longitude 81°46'18.85565\" W

Scale Factor 0.999947568

EXISTING CERTIFIED CORNER RECORDS

Document No.	Date
<u>21946</u>	<u>2-02-87</u>
<u>81744</u>	<u>5-17-04</u>

The above documents are based on FDEP Bureau of Surveying and Mapping Record Information.

I hereby certify the monument and accessories shown above were field located on 6-29-04.

*James R. Coleman*  
JAMES R. COLEMAN  
Registered Land Surveyor  
Florida Certificate No. 3206  
Date Signed 8-04-04

BEAN, WHITAKER, LUTZ & KAREH, INC. (LB 4919)  
13041 McGregor Boulevard  
Fort Myers, Florida 33919-5910  
Phone: (239) 481-1331

COORDINATE NO. 8342

BLM REFERENCE NO. T47SR25E600540