

CERTIFIED CORNER RECORD

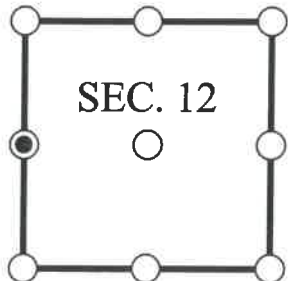
DOC. # _____

W 1/4 Corner of Section 12, Township 47, Range 25, LEE County

- GLO CORNER (PROVEN)
 LAND GRANT CORNER
 HISTORIC CORNER
 OTHER CORNER

CORNER DESCRIPTION: MONUMENT DESCRIPTION (EVIDENCE FOUND OR METHOD USED TO SET)

Depict corner with



FOUND 4x4" CONCRETE MONUMENT POST WITH STAMPED DISK CONSISTENT WITH CORNER RECORD 081744, STAMPED DENI LS3950 11/12.

HORIZONTAL POSITION INFORMATION (if determined):

Latitude: N26° 23' 51.1524" Longitude: W81° 46' 18.8480"

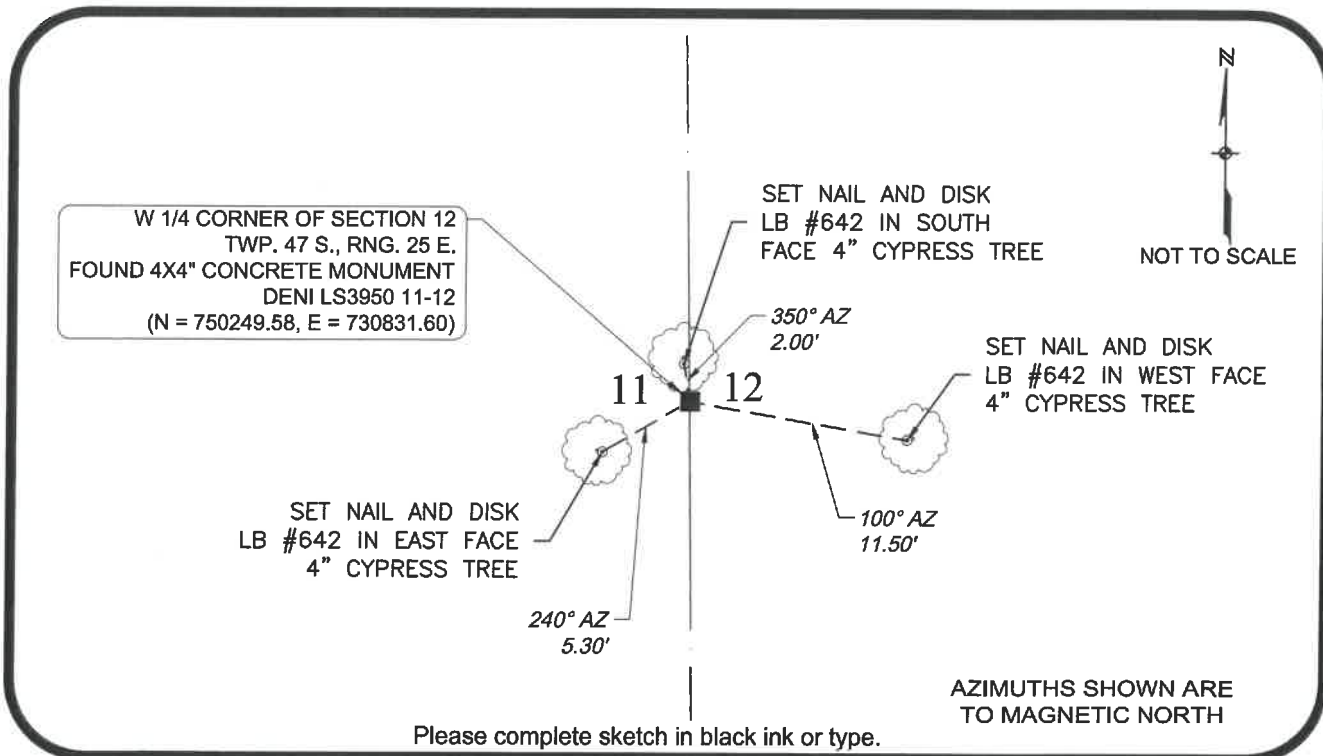
Y(NORTHING-Ft.) 750249.579 X(EASTING-Ft.) 730831.597 Zone FL West

Horizontal datum: NAD83(2011)

Source: _____

Determined by: GPS (VRS)

- EXISTING
 OBLITERATED
 LOST



SURVEYORS CERTIFICATE:

I certify the monument and accessories indicated above were field located on 10/07/2017

SIGNATURE _____ 4912 PSM NO.
 Johnson Engineering, Inc. 642
 FIRM OR AGENCY LB NO.
 2122 Johnson Street
 ADDRESS
 Fort Myers Florida 33901
 CITY STATE ZIP
 866-367-4400
 PHONE NUMBER DATE

SEND ORIGINAL TO:
 Department of Environmental Protection
 Bureau of Surveying and Mapping
 3900 Commonwealth Boulevard
 Mail Station 105
 Tallahassee, Florida 32399

NOTE: Do not make changes to this form

D.E.P. USE ONLY

Processed: _____

B.L.M. - I.D. _____

QUAD - I.D. _____

EMBOSSSED SEAL OVER SIGNATURE