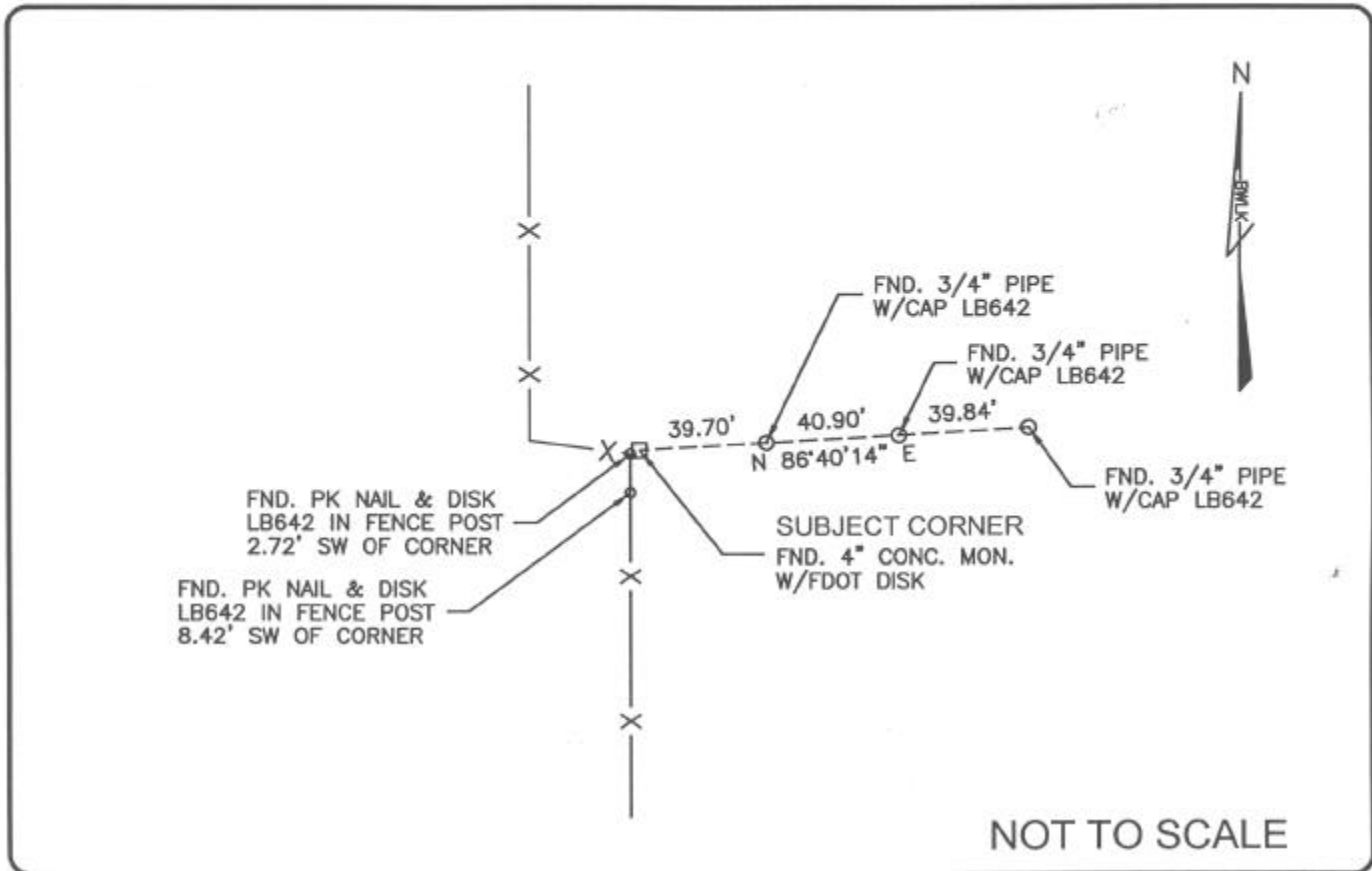


LAND CORNER RECORD

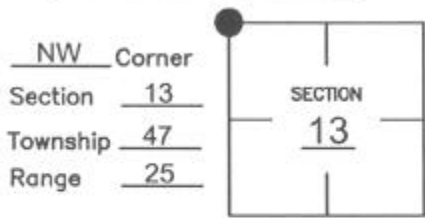
PUBLIC WORKS
 LEE COUNTY, FLORIDA
 Address - 1500 Monroe St., Ft. Myers, Fla. 33901 Phone : (239) 479-8900



COMMENTS:

Recovered corner and three references as described on CCR #74960.

CORNER DESCRIPTION



HORIZONTAL POSITION INFORMATION

Florida West Zone, NAD 1983(1990 Adjustment)
 Northing(ft) 747231.900 Easting(ft) 730880.321
 Latitude 26°23'21.26355" N Longitude 81°46'18.37087" W
 Scale Factor 0.999947577

EXISTING CERTIFIED CORNER RECORDS

Document No.	Date
24948	2-02-87
74960	4-16-02

The above documents are based on FDEP Bureau of Surveying and Mapping Record Information.

I hereby certify the monument and accessories shown above were field located on 6-24-04.

James R. Coleman
 JAMES R. COLEMAN
 Registered Land Surveyor
 Florida Certificate No. 3205
 Date Signed 8-04-04

BEAN, WHITAKER, LUTZ & KAREH, INC. (LB 4919)
 13041 McGregor Boulevard
 Fort Myers, Florida 33919-5910
 Phone: (239) 481-1331

COORDINATE NO. 8350

BLM REFERENCE NO. T47SR25E600500