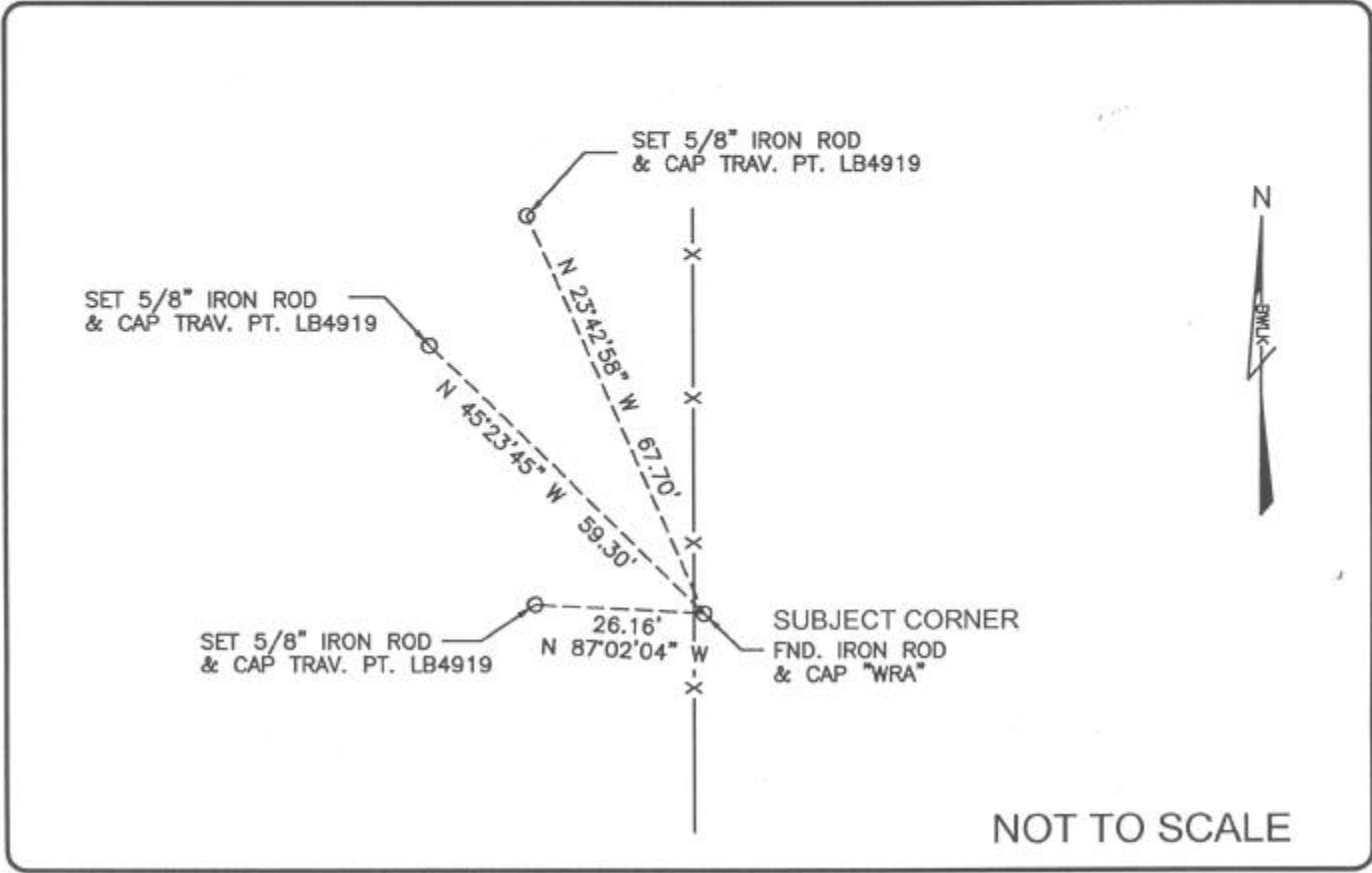


LAND CORNER RECORD

PUBLIC WORKS  
 LEE COUNTY, FLORIDA  
 Address - 1500 Monroe St., Ft. Myers, Fla. 33901 Phone : (239) 479-8900

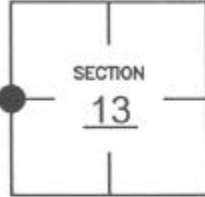


COMMENTS:

CORNER DESCRIPTION

Recovered corner as described on CCR #74961.

W 1/4 Corner  
 Section 13  
 Township 47  
 Range 25



HORIZONTAL POSITION INFORMATION

Florida West Zone, NAD 1983(1990 Adjustment)  
 Northing(ft) 744777.524 Easting(ft) 730927.043  
 Latitude 26°22'56.95382" N Longitude 81°46'17.90487" W  
 Scale Factor 0.999947585

EXISTING CERTIFIED CORNER RECORDS

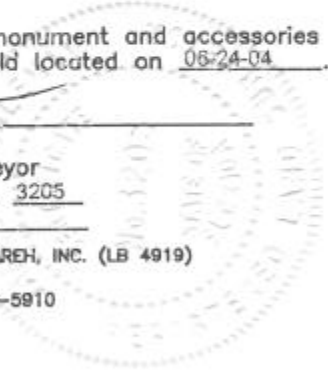
Document No.	Date
<u>74961</u>	<u>04-16-02</u>

The above documents are based on FDEP Bureau of Surveying and Mapping Record Information.

I hereby certify the monument and accessories shown above were field located on 06-24-04.

*[Signature]*  
 JAMES R. COLEMAN  
 Registered Land Surveyor  
 Florida Certificate No. 3205  
 Date Signed 08-03-04

BEAN, WHITAKER, LUTZ & KAREH, INC. (LB 4919)  
 13041 McGregor Boulevard  
 Fort Myers, Florida 33919-5910  
 Phone: (239) 481-1331



COORDINATE NO. 8349

BLM REFERENCE NO. T47SR25E600440