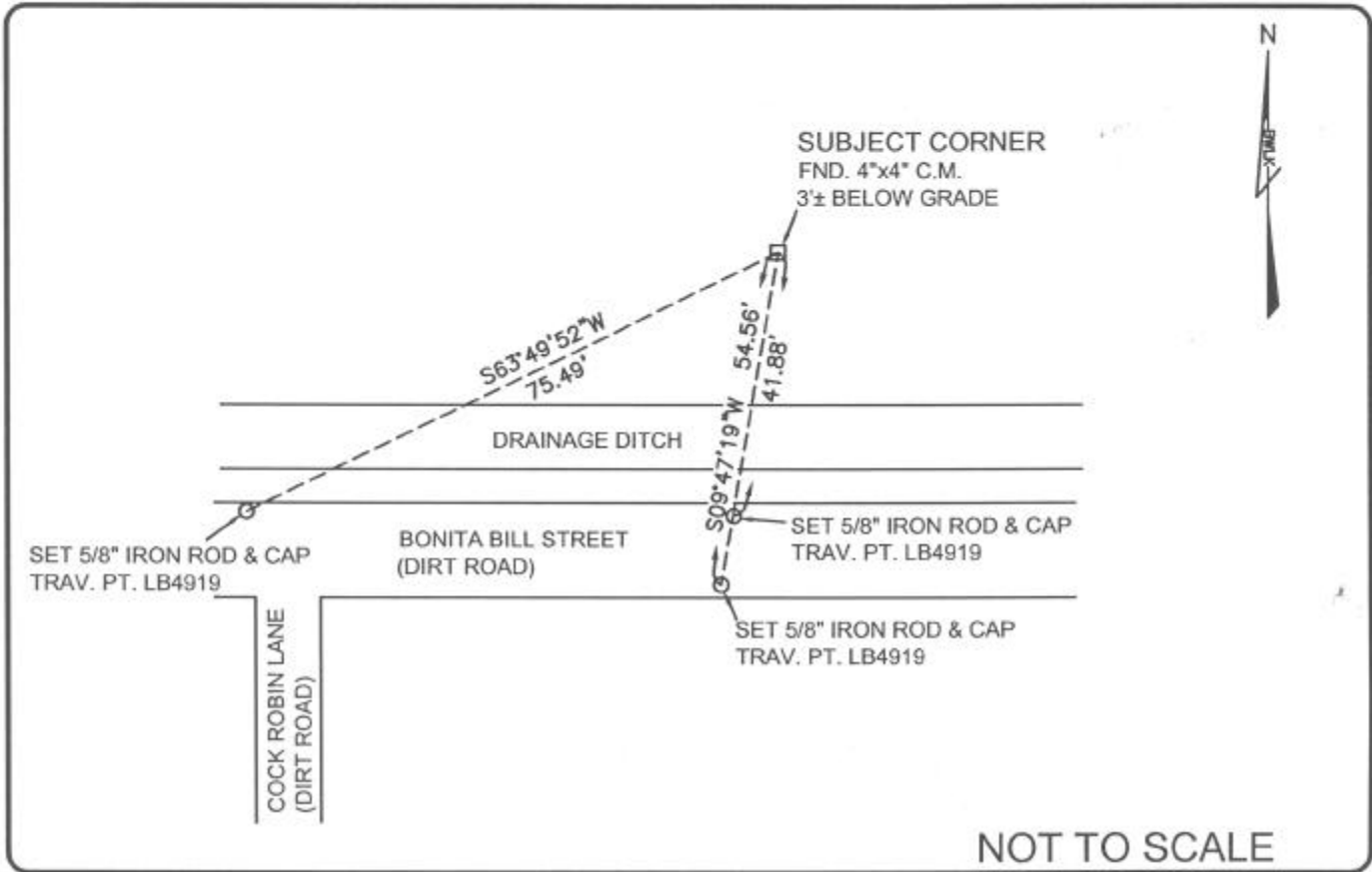


LAND CORNER RECORD

PUBLIC WORKS
LEE COUNTY, FLORIDA

Address - 1500 Monroe St., Ft. Myers, Fla. 33901

Phone : (239) 479-8900



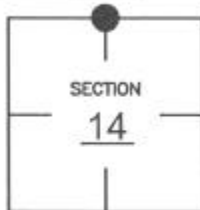
NOT TO SCALE

COMMENTS:

Recovered corner as described on CCR# 74959.

CORNER DESCRIPTION

N 1/4 Corner
Section 14
Township 47
Range 25



HORIZONTAL POSITION INFORMATION

Florida West Zone, NAD 1983(1990 Adjustment)
Northing(ft) 747572.226 Easting(ft) 728279.028
Latitude 26°23'24.6791\"N Longitude 81°46'46.9708\"W
Scale Factor .999947139

EXISTING CERTIFIED CORNER RECORDS

Document No.	Date
<u>74959</u>	<u>04-16-02</u>
<u>24951</u>	<u>02-02-87</u>

The above documents are based on FDEP Bureau of Surveying and Mapping Record Information.

I hereby certify the monument and accessories shown above were field located on 06-17-04.

James R. Coleman

JAMES R. COLEMAN
Registered Land Surveyor
Florida Certificate No. 3205
Date Signed 07-29-04

BEAN, WHITAKER, LUTZ & KAREH, INC. (LB 4919)
13041 McGregor Boulevard
Fort Myers, Florida 33919-5910
Phone: (239) 481-1331

CO-ORDINATE NO. 8333

BLM REFERENCE NO. T47SR25E540500