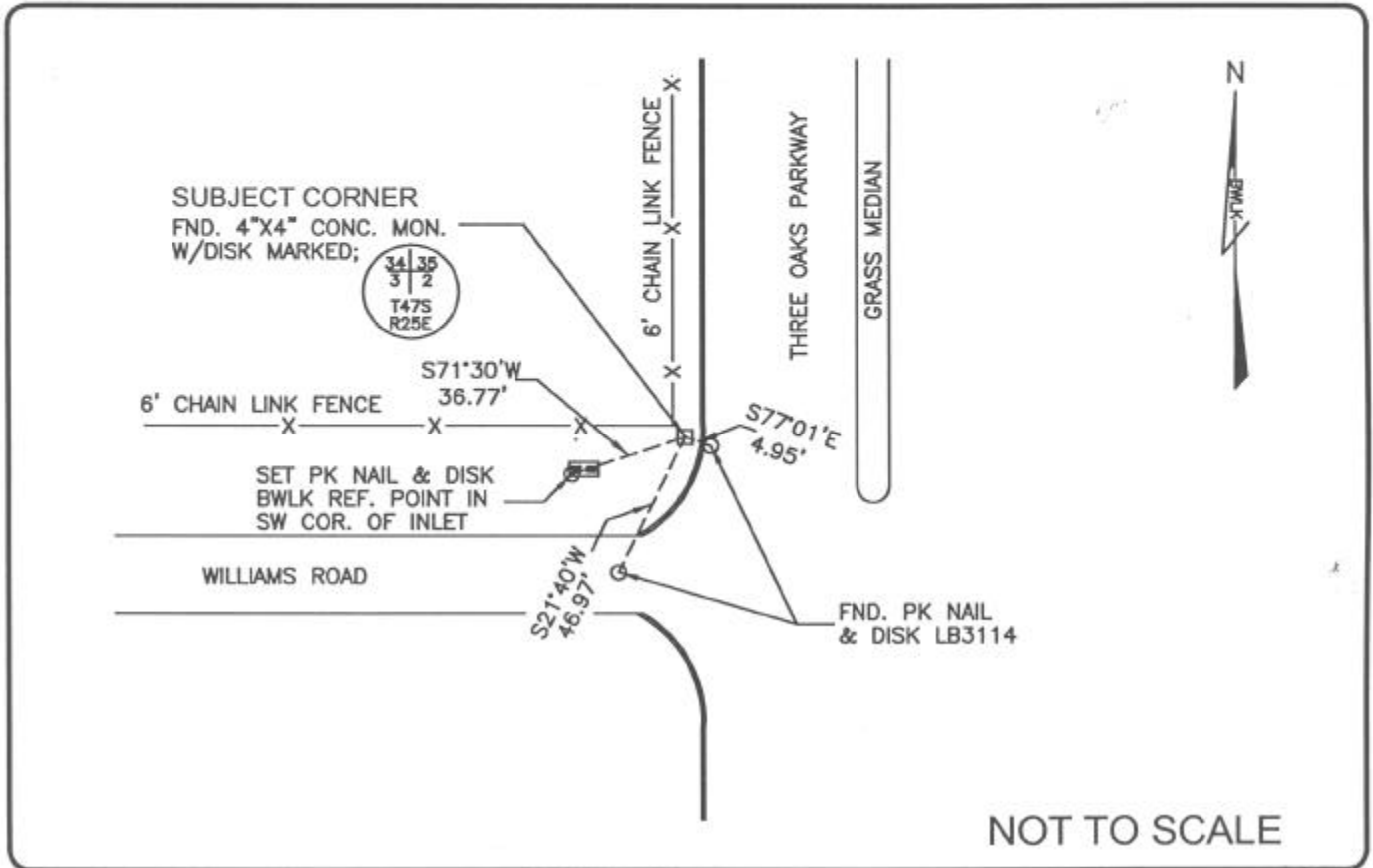


LAND CORNER RECORD

PUBLIC WORKS
LEE COUNTY, FLORIDA

Address - 1500 Monroe St., Ft. Myers, Fla. 33901

Phone : (239) 479-8900

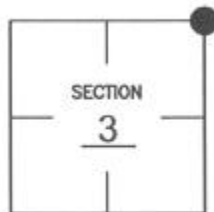


COMMENTS:

Recovered corner and 2 references as described on CCR #79093.

CORNER DESCRIPTION

NE Corner
Section 3
Township 47
Range 25



HORIZONTAL POSITION INFORMATION

Florida West Zone, NAD 1983(1990 Adjustment)

Northing(ft) 758584.772 Easting(ft) 725387.755

Latitude 26°25'13.79857" N Longitude 81°47'18.56754" W

Scale Factor 0.999946670

EXISTING CERTIFIED CORNER RECORDS

Document No.	Date
18970	5-14-84
79093	7-23-04

The above documents are based on FDEP Bureau of Surveying and Mapping Record Information.

I hereby certify the monument and accessories shown above were field located on 6-24-04

James R. Coleman
JAMES R. COLEMAN
Registered Land Surveyor
Florida Certificate No. 3205
Date Signed 08-04-04

BEAN, WHITAKER, LUTZ & KAREH, INC. (LB 4919)
13041 McGregor Boulevard
Fort Myers, Florida 33919-5910
Phone: (239) 481-1331

COORDINATE NO. 8355

BLM REFERENCE NO. T47SR25E500700