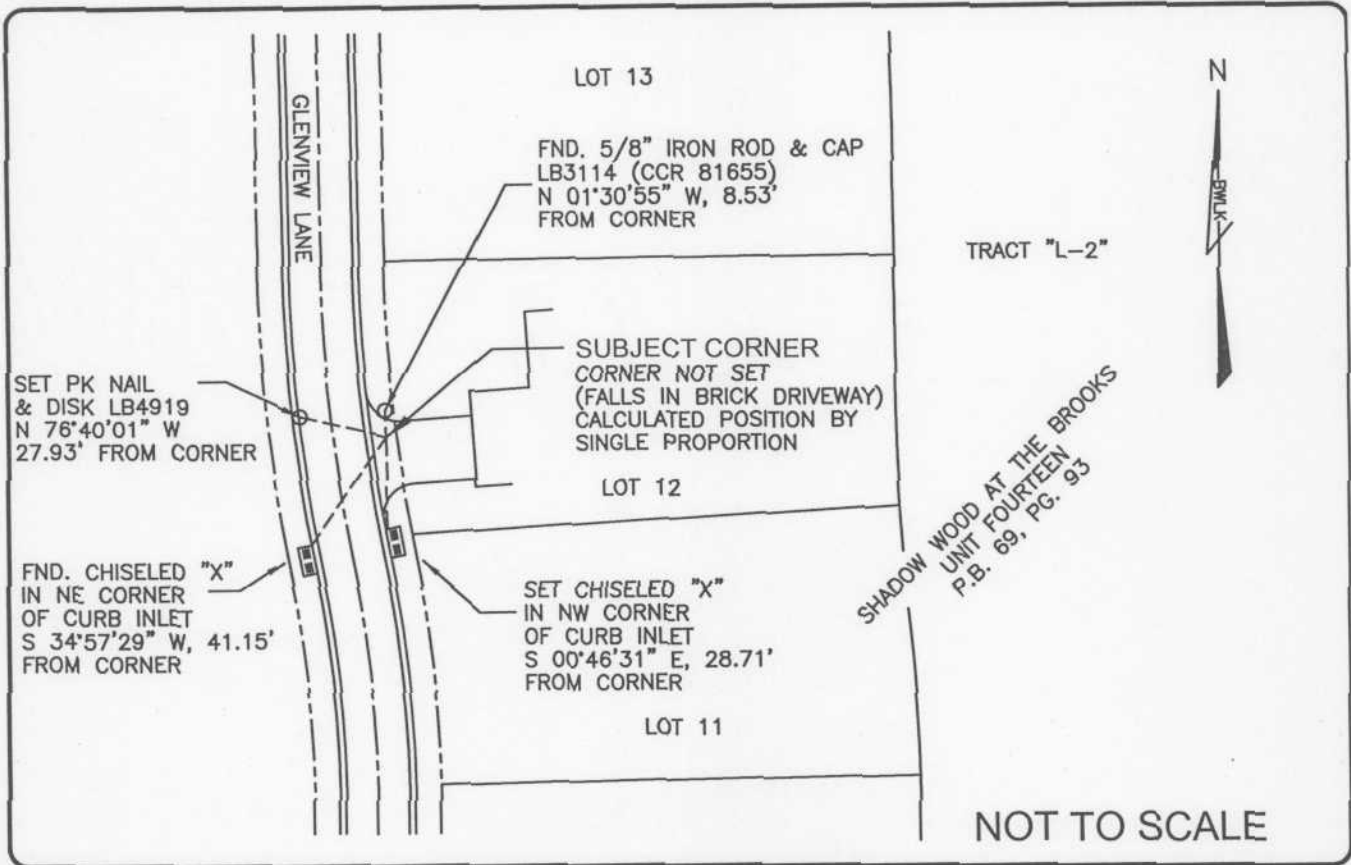


LAND CORNER RECORD

PUBLIC WORKS
LEE COUNTY, FLORIDA

Address - 1500 Monroe St., Ft. Myers, Fla. 33901

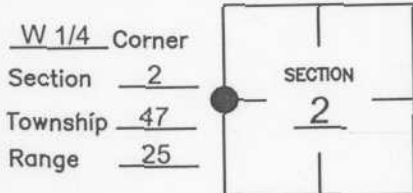
Phone : (239) 479-8900



COMMENTS:

Aim Engineering set this corner (CCR #81655) at the midpoint between SW the corner and the NW corner of Section 2-47-25. BWLK calculated the position for this corner by single proportion. The BWLK position compares favorably with the Deni Associates position (CCR #19824).

CORNER DESCRIPTION



HORIZONTAL POSITION INFORMATION

Florida West Zone, NAD 1983(1990 Adjustment)
 Northing(ft) 755911.779 Easting(ft) 725444.996
 Latitude 26°24'47.32356" N Longitude 81°47'17.98622 W
 Scale Factor 0.999946679

EXISTING CERTIFIED CORNER RECORDS

Document No.	Date
<u>19824</u>	<u>10-24-84</u>
<u>81655</u>	<u>5-12-04</u>
_____	_____
_____	_____

The above documents are based on FDEP Bureau of Surveying and Mapping Record Information.

I hereby certify the monument and accessories shown above were field located on 8-09-04

JAMES R. COLEMAN
 Registered Land Surveyor
 Florida Certificate No. 3205
 Date Signed 8-20-04

BEAN, WHITAKER, LUTZ & KAREH, INC. (LB 4919)
 13041 McGregor Boulevard
 Fort Myers, Florida 33919-5910
 Phone: (239) 481-1331

COORDINATE NO. 8360

BLM REFERENCE NO. T47SR25E500640