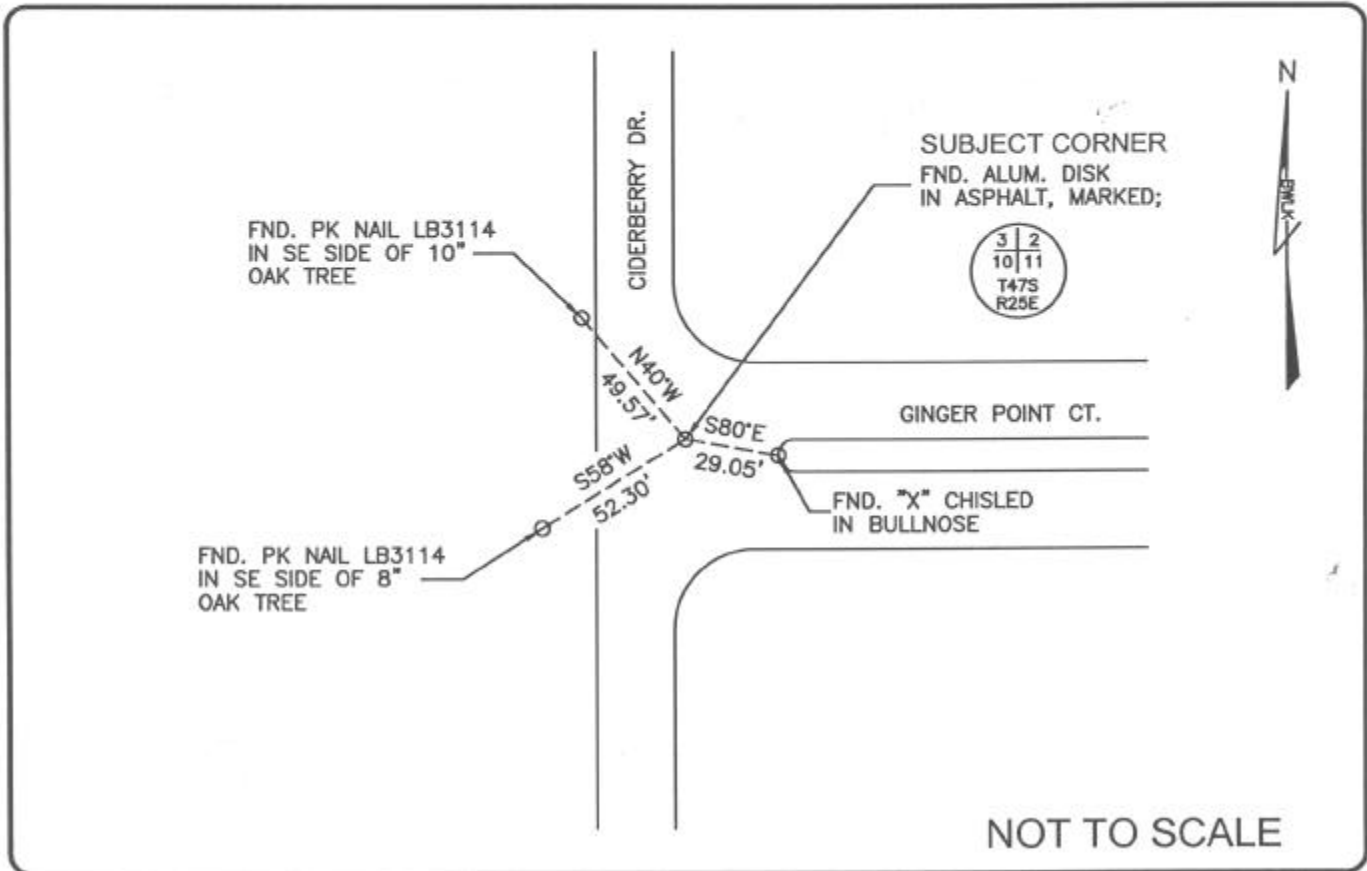


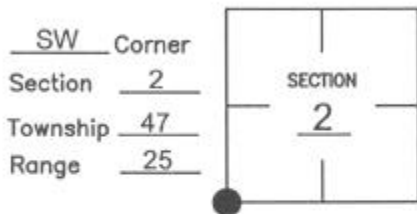
LAND CORNER RECORD

PUBLIC WORKS
 LEE COUNTY, FLORIDA
 Address - 1500 Monroe St., Ft. Myers, Fla. 33901 Phone : (239) 479-8900



COMMENTS:
 Recovered corner and 3 references as described on CCR #81657.

CORNER DESCRIPTION



HORIZONTAL POSITION INFORMATION

Florida West Zone, NAD 1983(1990 Adjustment)
 Northing(ft) 753256.059 Easting(ft) 725501.868
 Latitude 26°24'21.01960" N Longitude 81°47'17.40870" W
 Scale Factor 0.999946689

EXISTING CERTIFIED CORNER RECORDS

Document No.	Date
18969	5-14-84
81657	5-12-04

The above documents are based on FDEP Bureau of Surveying and Mapping Record Information.

I hereby certify the monument and accessories shown above were field located on 7-09-04.

James R. Coleman
 JAMES R. COLEMAN
 Registered Land Surveyor
 Florida Certificate No. 3205
 Date Signed 8-04-04

BEAN, WHITAKER, LUTZ & KAREH, INC. (LB 4919)
 13041 McGregor Boulevard
 Fort Myers, Florida 33919-5910
 Phone: (239) 481-1331

COORDINATE NO. 8357

BLM REFERENCE NO. T47SR25E500600