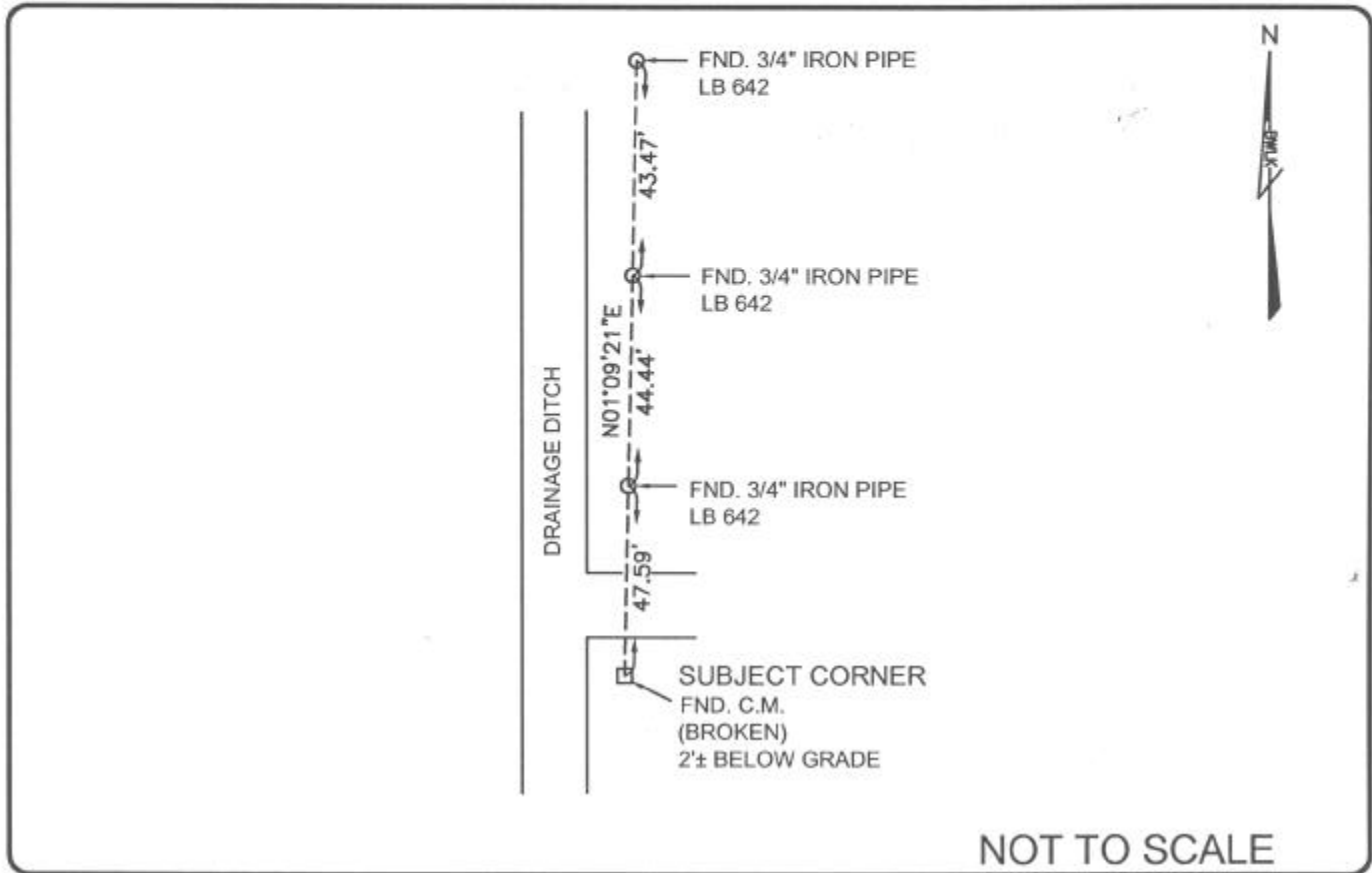


LAND CORNER RECORD

PUBLIC WORKS
LEE COUNTY, FLORIDA

Address - 1500 Monroe St., Ft. Myers, Fla. 33901

Phone : (239) 479-8900

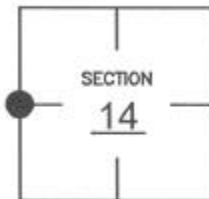


COMMENTS:

Recovered corner and 3 references as described on CCR# 74965.

CORNER DESCRIPTION

W 1/4 Corner
Section 14
Township 47
Range 25



HORIZONTAL POSITION INFORMATION

Florida West Zone, NAD 1983(1990 Adjustment)

Northing(ft) 744666.710 Easting(ft) 725616.207

Latitude 26°22'55.9461"N Longitude 81°47'16.3066"W

Scale Factor .999946707

EXISTING CERTIFIED CORNER RECORDS

Document No.	Date
<u>74965</u>	<u>04-16-02</u>

The above documents are based on FDEP Bureau of Surveying and Mapping Record Information.

I hereby certify the monument and accessories shown above were field located on 06-17-04.

James R. Coleman

JAMES R. COLEMAN
Registered Land Surveyor
Florida Certificate No. 3205
Date Signed 07-29-04

BEAN, WHITAKER, LUTZ & KAREH, INC. (LB 4919)
13041 McGregor Boulevard
Fort Myers, Florida 33919-5910
Phone: (239) 481-1331

CO-ORDINATE NO. 8334

BLM REFERENCE NO. T47SR25E500440