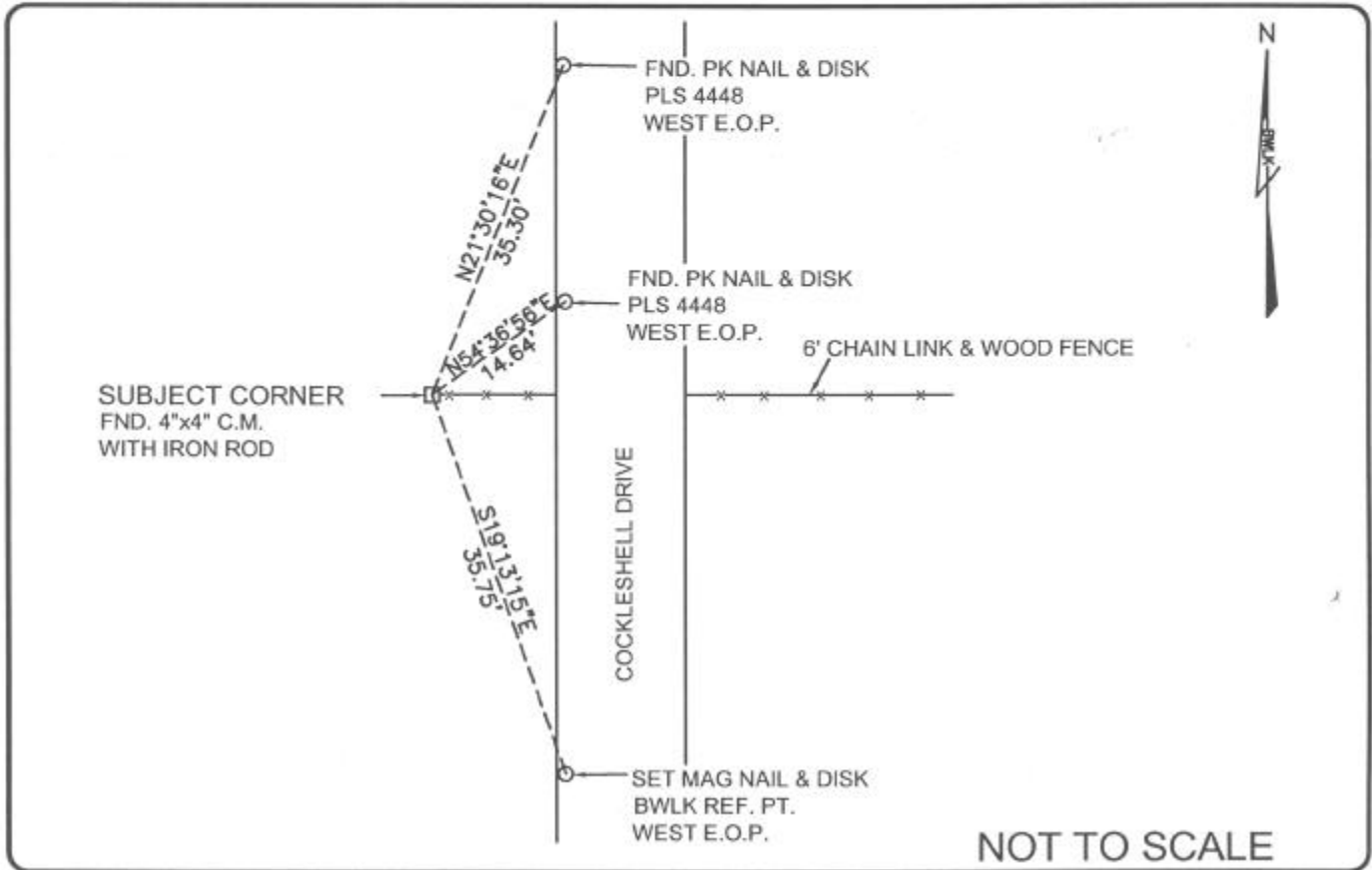


LAND CORNER RECORD

PUBLIC WORKS
 LEE COUNTY, FLORIDA
 Address — 1500 Monroe St., Ft. Myers, Fla. 33901 Phone : (239) 479-8900



NOT TO SCALE

COMMENTS:
 Recovered corner and 3 references as described on CCR #74964.

CORNER DESCRIPTION

NW Corner
 Section 23
 Township 47
 Range 25



HORIZONTAL POSITION INFORMATION

Florida West Zone, NAD 1983(1990 Adjustment)
 Northing(ft) 742000.479 Easting(ft) 725627.009
 Latitude 26°22'29.5387\"N Longitude 81°47'16.2361\"W
 Scale Factor .999946708

EXISTING CERTIFIED CORNER RECORDS

Document No.	Date
74964	04-16-02

The above documents are based on FDEP Bureau of Surveying and Mapping Record Information.

I hereby certify the monument and accessories shown above were field located on 06-14-04.

James R. Coleman
 JAMES R. COLEMAN
 Registered Land Surveyor
 Florida Certificate No. 3205
 Date Signed 07-29-04

BEAN, WHITAKER, LUTZ & KAREN, INC. (LB 4919)
 13041 McGregor Boulevard
 Fort Myers, Florida 33919-5910
 Phone: (239) 481-1331

CO-ORDINATE NO. 8339

BLM REFERENCE NO. T47SR25E500400