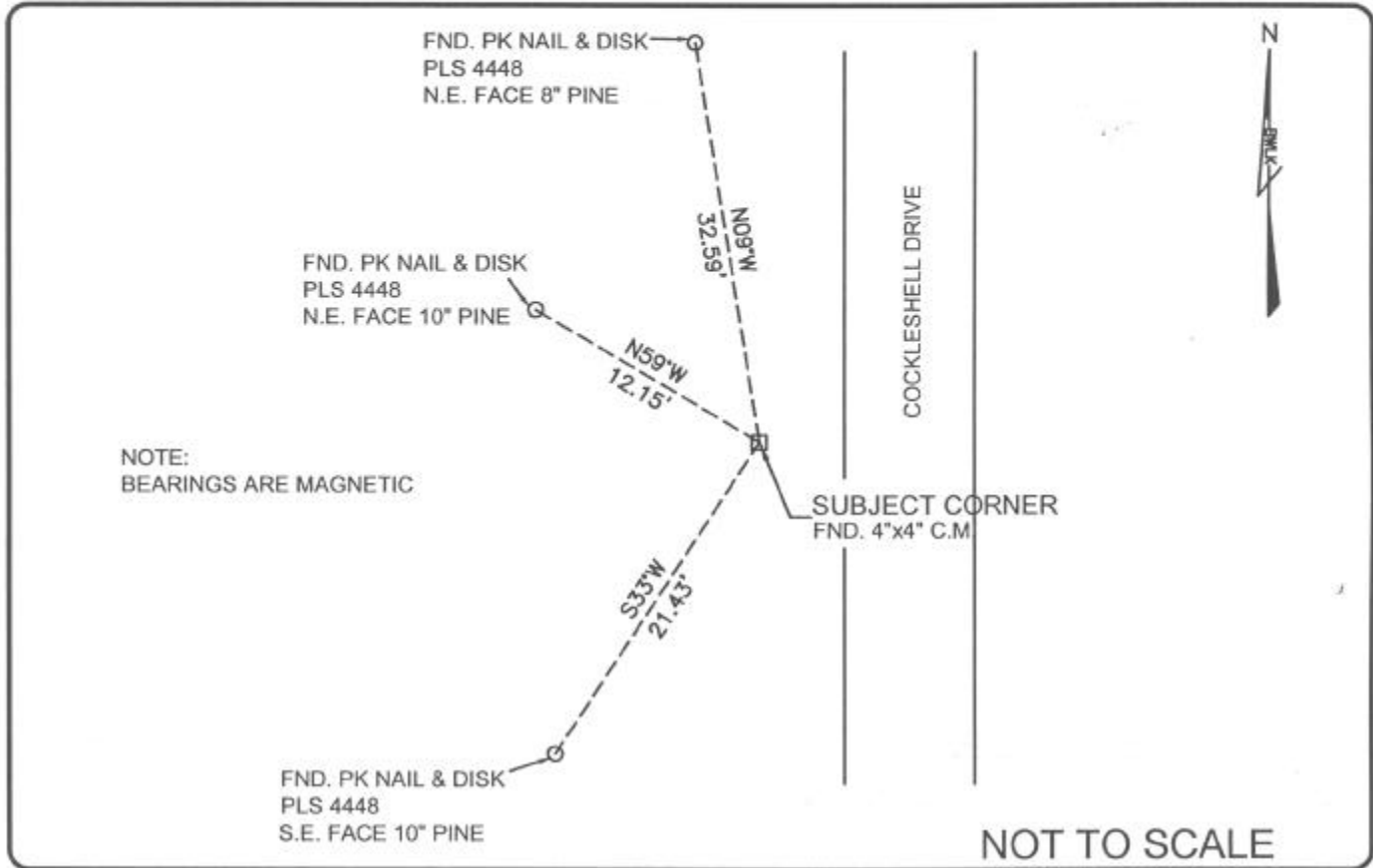


LAND CORNER RECORD

PUBLIC WORKS
 LEE COUNTY, FLORIDA
 Address - 1500 Monroe St., Ft. Myers, Fla. 33901 Phone : (239) 479-8900

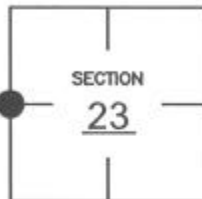


NOTE:
 BEARINGS ARE MAGNETIC

COMMENTS:
 Corner and 3 references found as described on CCR #74970.

CORNER DESCRIPTION

W 1/4 Corner
 Section 23
 Township 47
 Range 25



HORIZONTAL POSITION INFORMATION

Florida West Zone, NAD 1983(1990 Adjustment)
 Northing(ft) 739330.389 Easting(ft) 725687.879
 Latitude 26°22'03.0922"N Longitude 81°47'15.6151"W
 Scale Factor .999946718

EXISTING CERTIFIED CORNER RECORDS

Document No.	Date
<u>74970</u>	<u>04-16-02</u>

The above documents are based on FDEP Bureau of Surveying and Mapping Record Information.

I hereby certify the monument and accessories shown above were field located on 06-14-04.

James R. Coleman
 JAMES R. COLEMAN
 Registered Land Surveyor
 Florida Certificate No. 3205
 Date Signed 07-29-04

BEAN, WHITAKER, LUTZ & KAREH, INC. (LB 4919)
 13041 McGregor Boulevard
 Fort Myers, Florida 33919-5910
 Phone: (239) 481-1331

CO-ORDINATE NO. 8338

BLM REFERENCE NO. T47SR25E500340