

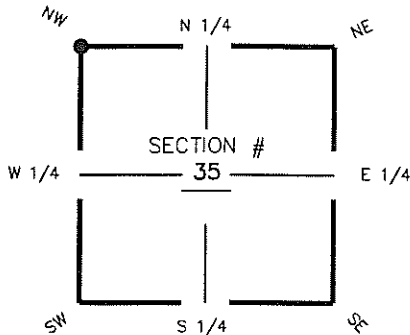
FLORIDA DEPARTMENT OF ENVIRONMENTAL PROTECTION CERTIFIED CORNER RECORD

DOC. # _____

V-17

CORNER DESCRIPTION: MONUMENTATION DESCRIPTION (EVIDENCE FOUND OR METHOD TO SET)

Depict corner with

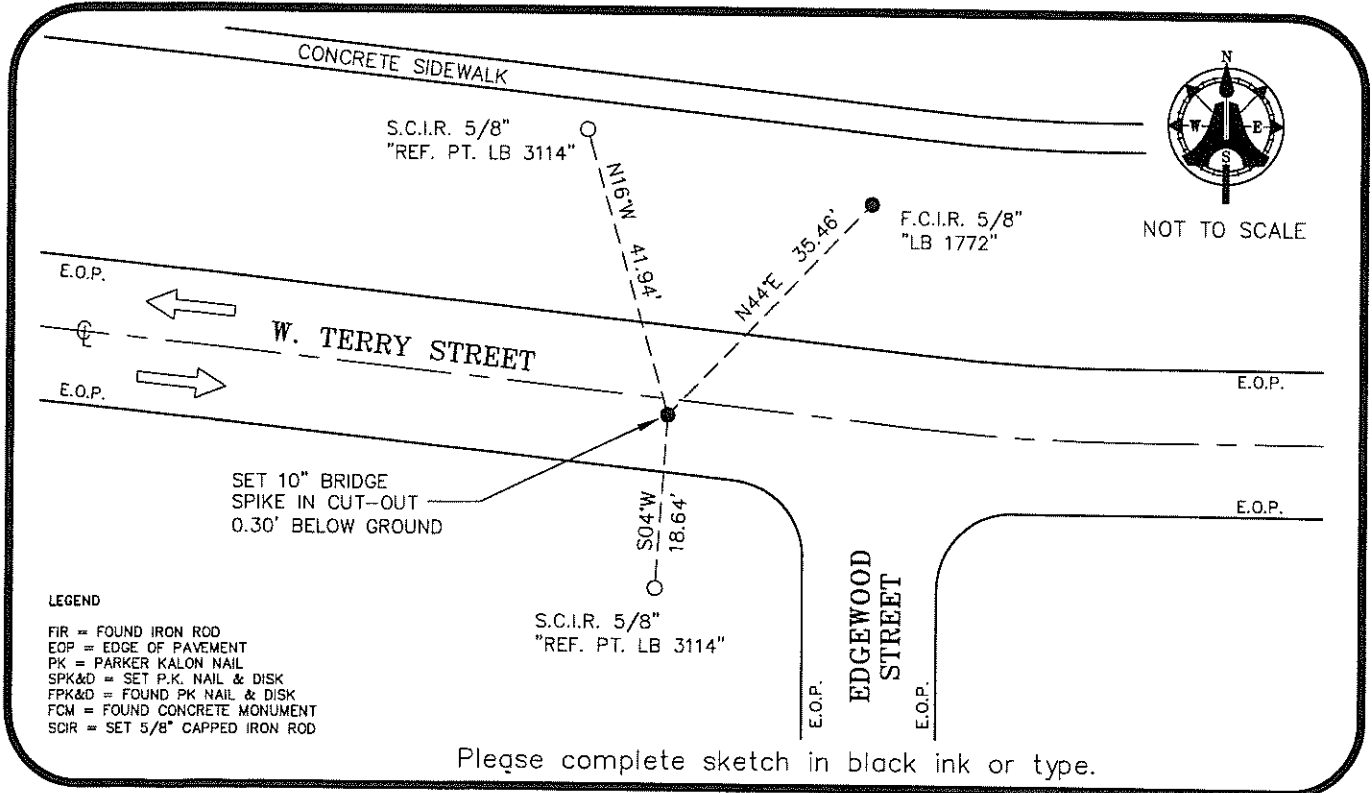


SET 10" BRIDGE SPIKE IN CUT-OUT,
0.30' BELOW ASPHALT,
USING COORDINATE VALUES
PER CCR # 084082

HORIZONTAL POSITION INFORMATION (if determined):

Latitude 26° 20' 43.6214" N Longitude 81° 47' 14.0092" W
 Y(NORTHING-Ft.) 731306.84 X(EASTING-Ft.) 725847.16 Zone FL W
 Convergence 00° 05' 39.9" Scale factor 0.99994674
 Coordinate determination (circle one): Field traverse GPS
 Horizontal datum (circle one): NAD27 NAD83(1986) NAD83(1999) other (explain) _____
 Accuracy (circle one): 1st 2nd 3rd other _____

NW corner of Section 35
 Twp 47 S Rge 25 E
 Tallahassee Base Meridian,
LEE County(s), Florida



- LEGEND**
- FIR = FOUND IRON ROD
 - EOP = EDGE OF PAVEMENT
 - PK = PARKER KALON NAIL
 - SPK&D = SET P.K. NAIL & DISK
 - FPK&D = FOUND PK NAIL & DISK
 - FCM = FOUND CONCRETE MONUMENT
 - SCIR = SET 5/8" CAPPED IRON ROD

Please complete sketch in black ink or type.

SURVEYORS CERTIFICATE:

I certify the monument and accessories indicated above were field located on AUGUST 07, 2008

 SIGNATURE
AIM ENGINEERING & SURVEYING, INC.
 FIRM OR AGENCY
5300 LEE BOULEVARD
 ADDRESS
LEHIGH ACRES, FLORIDA 33971-1026
 CITY STATE ZIP
(239) 332-4569 03-20-09
 PHONE NUMBER DATE

SEND ORIGINAL TO:
 Department of Environmental Protection
 Bureau of Surveying and Mapping
 3900 Commonwealth Boulevard
 Mail Station 105
 Tallahassee, Florida 32399

D.E.P. USE ONLY	
Processed: _____	_____
B.L.M. - I.D. _____	_____
QUAD - I.D. _____	_____

EMBOSSSED SEAL OVER SIGNATURE