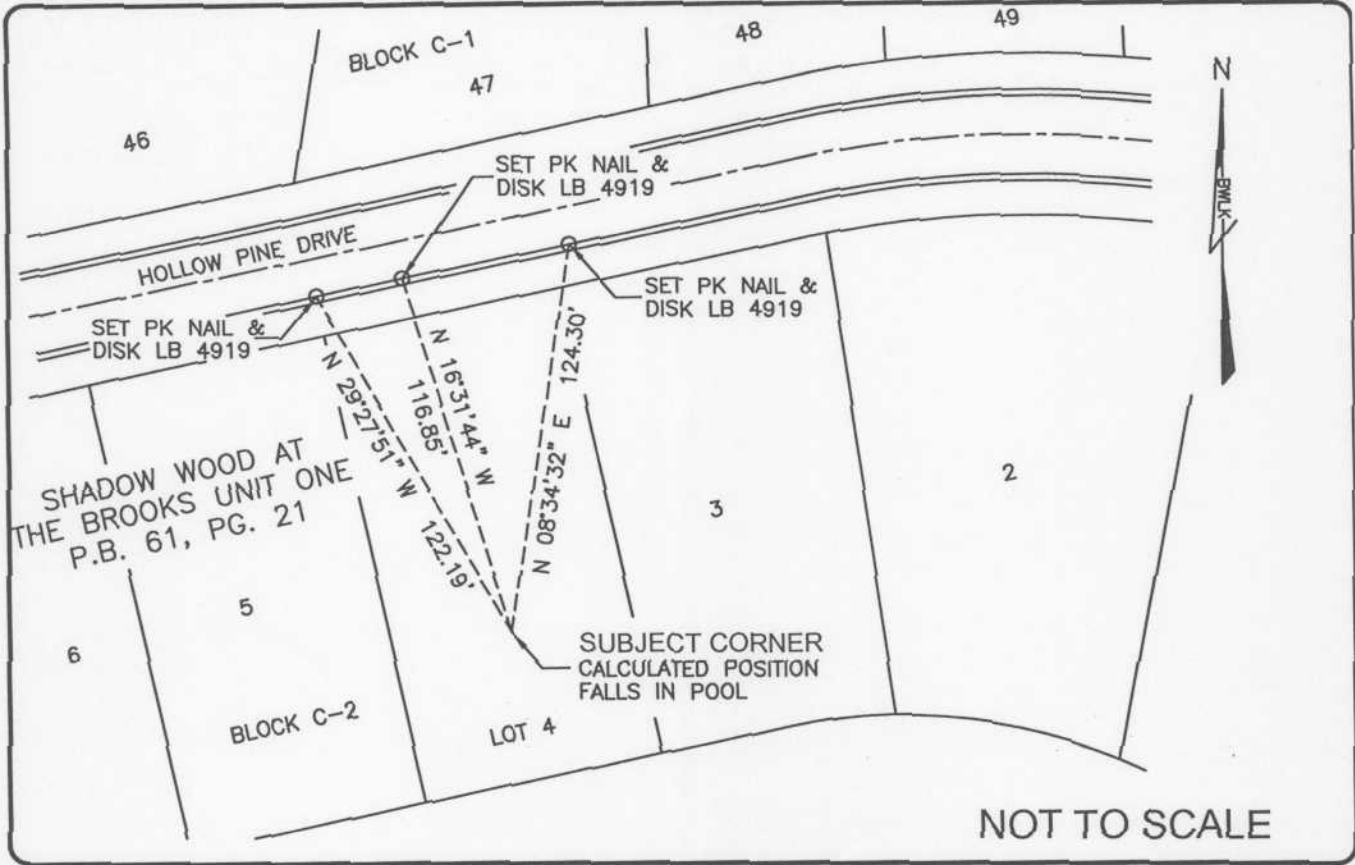


LAND CORNER RECORD

PUBLIC WORKS
LEE COUNTY, FLORIDA

Address ~ 1500 Monroe St., Ft. Myers, Fla. 33901

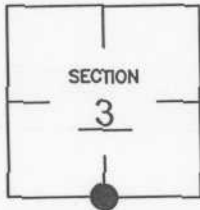
Phone : (239) 479-8900



COMMENTS:

CORNER DESCRIPTION

S 1/4 Corner
Section 3
Township 47
Range 25



Subject corner falls in residential pool area at 9275 Hollow Pine Drive. BLMK calculated the position by single proportion and set three reference points in the south edge of pavement of Hollow Pine Drive.

HORIZONTAL POSITION INFORMATION

Florida West Zone, NAD 1983(1990 Adjustment)
Northing(ft) 753206.758 Easting(ft) 722837.604
Latitude 26°24'20.57387" N Longitude 81°47'46.71263" W
Scale Factor 0.999946273

EXISTING CERTIFIED CORNER RECORDS

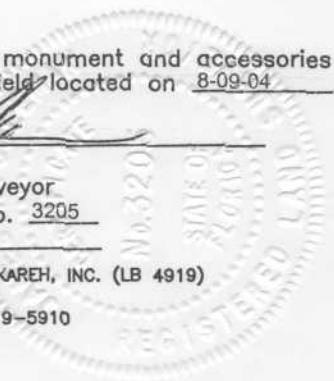
Document No.	Date
19822	10-24-84

The above documents are based on FDEP Bureau of Surveying and Mapping Record Information.

I hereby certify the monument and accessories shown above were field located on 8-09-04

James R. Coleman
JAMES R. COLEMAN
Registered Land Surveyor
Florida Certificate No. 3205
Date Signed 8-12-04

BEAN, WHITAKER, LUTZ & KAREH, INC. (LB 4919)
13041 McGregor Boulevard
Fort Myers, Florida 33919-5910
Phone: (239) 481-1331



COORDINATE NO. 8366

BLM REFERENCE NO. T47SR25E440600