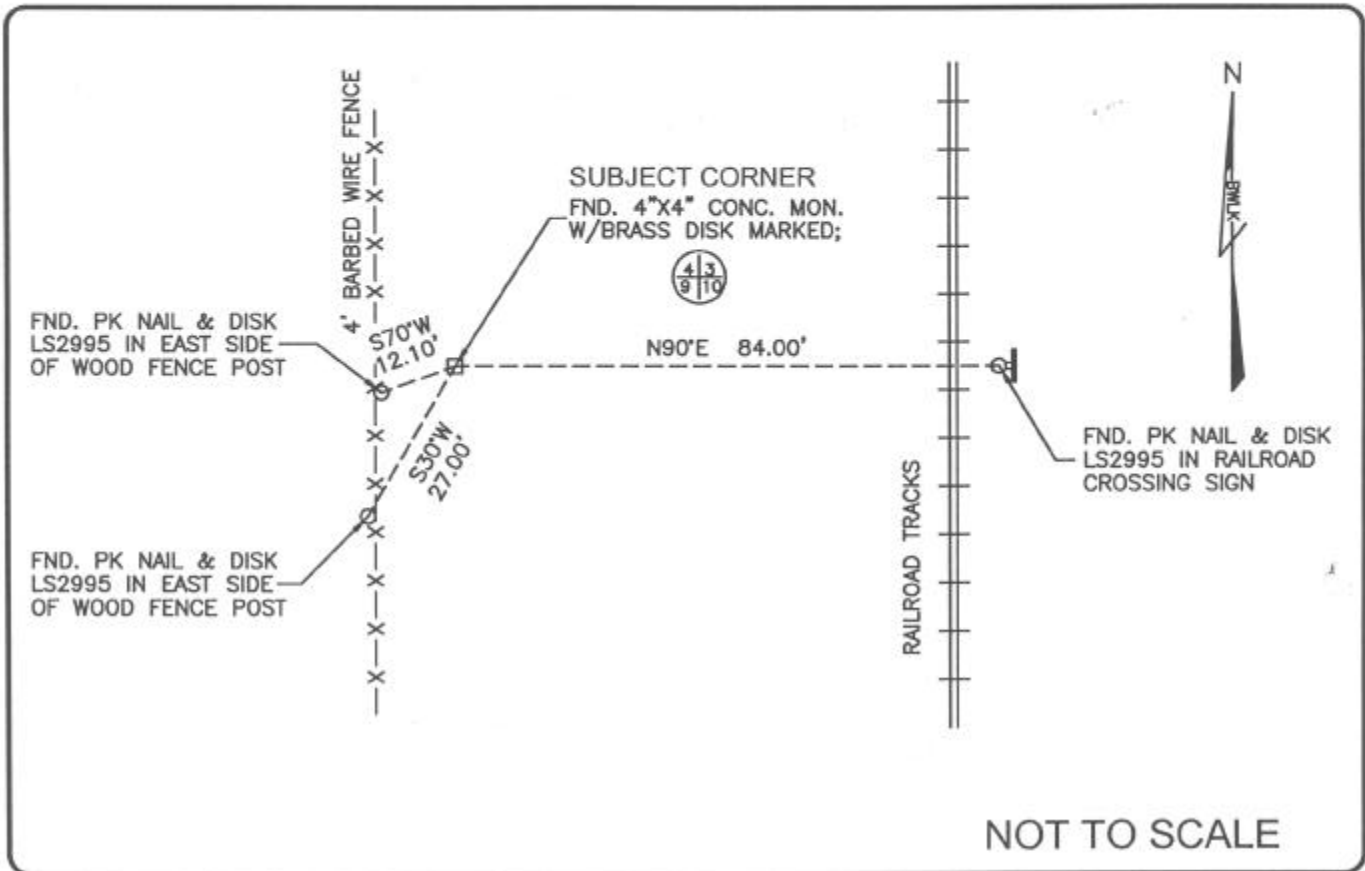


LAND CORNER RECORD

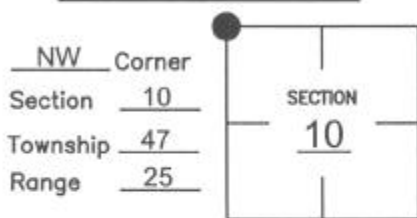
PUBLIC WORKS  
 LEE COUNTY, FLORIDA  
 Address - 1500 Monroe St., Ft. Myers, Fla. 33901 Phone : (239) 479-8900



COMMENTS:

Recovered corner and 3 references as described on CCR #65566.

CORNER DESCRIPTION



HORIZONTAL POSITION INFORMATION

Florida West Zone, NAD 1983(1990 Adjustment)  
 Northing(ft) 753157.456 Easting(ft) 720173.340  
 Latitude 26°24'20.12645" N Longitude 81°48'16.01650" W  
 Scale Factor 0.999945874

EXISTING CERTIFIED CORNER RECORDS

Document No.	Date
18965	5-15-84
65566	11-01-99

The above documents are based on FDEP Bureau of Surveying and Mapping Record Information.

I hereby certify the monument and accessories shown above were field located on 7-13-04.

*James R. Coleman*  
 JAMES R. COLEMAN  
 Registered Land Surveyor  
 Florida Certificate No. 3205  
 Date Signed 8-04-04

BEAN, WHITAKER, LUTZ & KAREH, INC. (LB 4919)  
 13041 McGregor Boulevard  
 Fort Myers, Florida 33919-5910  
 Phone: (239) 481-1331

COORDINATE NO. 8364

BLM REFERENCE NO. T47SR25E400600