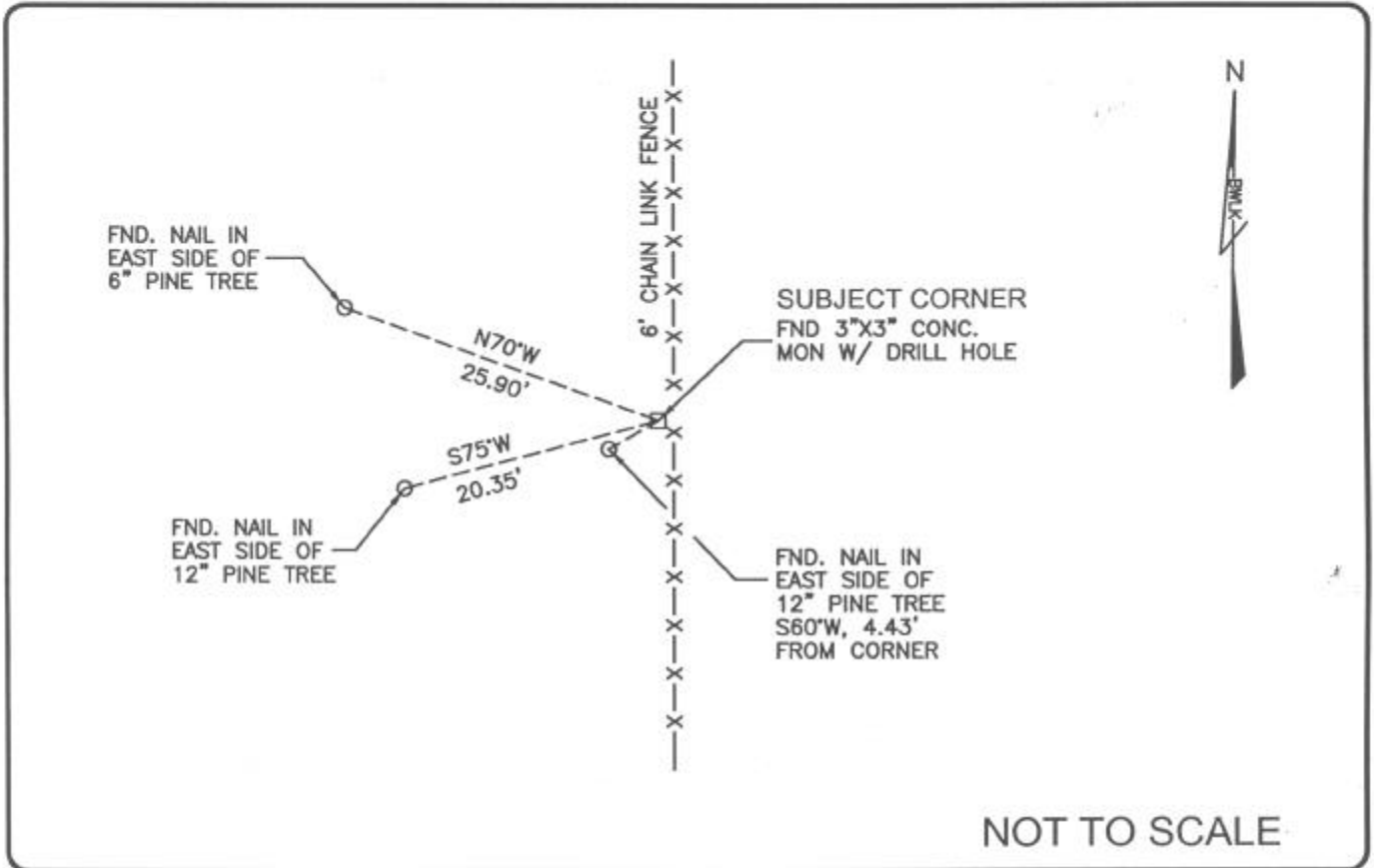


LAND CORNER RECORD

PUBLIC WORKS  
LEE COUNTY, FLORIDA

Address - 1500 Monroe St., Ft. Myers, Fla. 33901

Phone : (239) 479-8900



COMMENTS:

Recovered corner and 3 references as described on CCR #61596.

CORNER DESCRIPTION

W 1/4 Corner  
Section 27  
Township 47  
Range 25



HORIZONTAL POSITION INFORMATION

Florida West Zone, NAD 1983(1990 Adjustment)

Northing(ft) 734587.495 Easting(ft) 720472.727

Latitude 26°21'16.19867" N Longitude 81°48'13.03472" W

Scale Factor 0.999945918

EXISTING CERTIFIED CORNER RECORDS

Document No.	Date
61596	3-01-98

The above documents are based on FDEP Bureau of Surveying and Mapping Record Information.

I hereby certify the monument and accessories shown above were field located on 7-13-04.

*James R. Coleman*

JAMES R. COLEMAN  
Registered Land Surveyor  
Florida Certificate No. 3205  
Date Signed 8-04-04

BEAN, WHITAKER, LUTZ & KAREH, INC. (LB 4919)  
13041 McGregor Boulevard  
Fort Myers, Florida 33919-5910  
Phone: (239) 481-1331

COORDINATE NO. 8368

BLM REFERENCE NO. T47SR25E400240