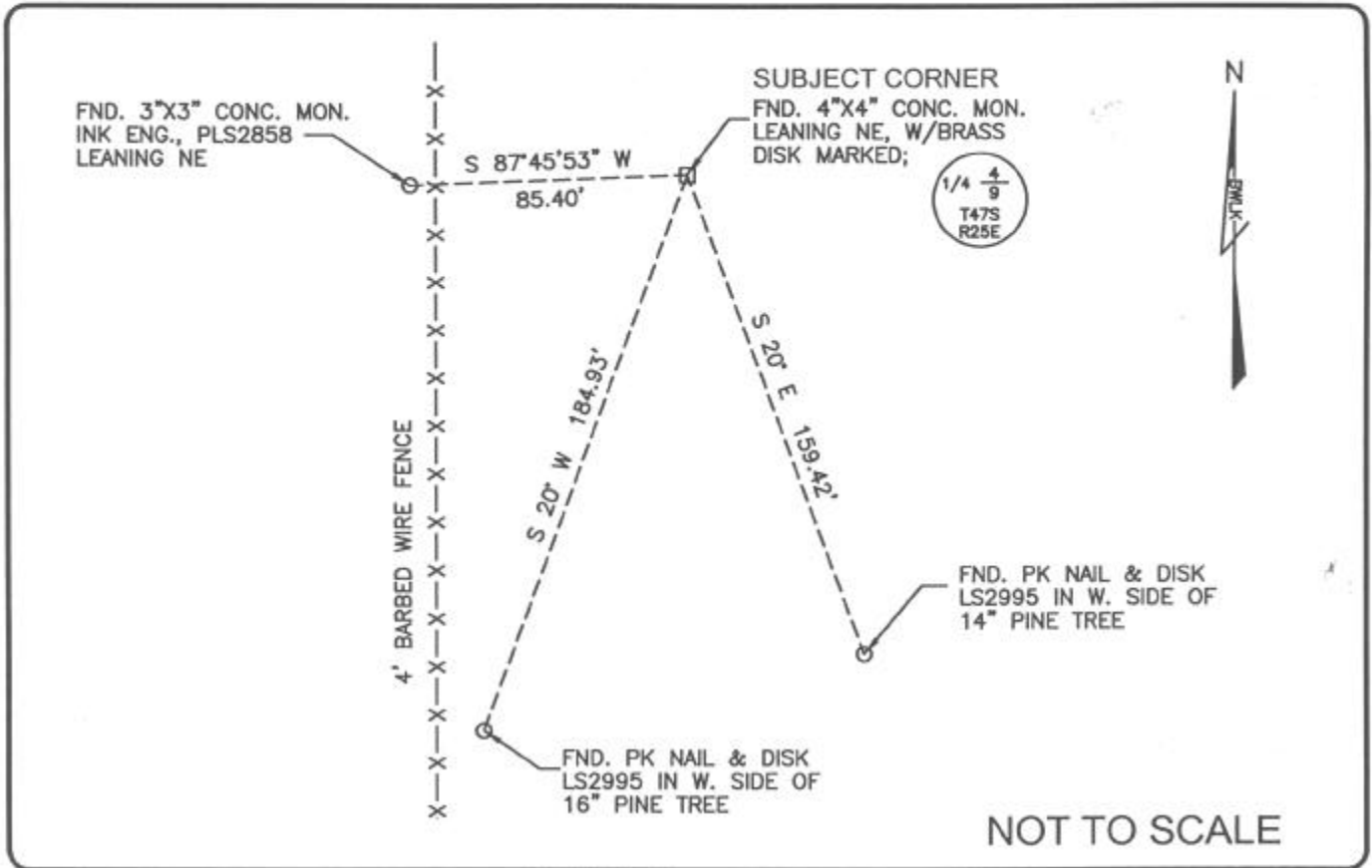


LAND CORNER RECORD

PUBLIC WORKS
LEE COUNTY, FLORIDA

Address - 1500 Monroe St., Ft. Myers, Fla. 33901

Phone : (239) 479-8900



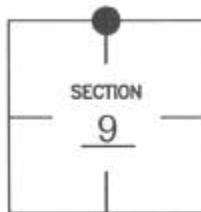
NOT TO SCALE

COMMENTS:

Recovered corner and 3 references as described on CCR #65568.

CORNER DESCRIPTION

N 1/4 Corner
Section 9
Township 47
Range 25



HORIZONTAL POSITION INFORMATION

Florida West Zone, NAD 1983(1990 Adjustment)

Northing(ft) 753076.883 Easting(ft) 717491.962

Latitude 26°24'19.36790" N Longitude 81°48'45.50905" W

Scale Factor 0.999945489

EXISTING CERTIFIED CORNER RECORDS

Document No.	Date
<u>18968</u>	<u>5-15-84</u>
<u>65568</u>	<u>11-01-99</u>

The above documents are based on FDEP Bureau of Surveying and Mapping Record Information.

I hereby certify the monument and accessories shown above were field located on 7-13-04.

James R. Coleman

JAMES R. COLEMAN
Registered Land Surveyor
Florida Certificate No. 3295
Date Signed 8-04-04

BEAN, WHITAKER, LUTZ & KAREH, INC. (LB 4919)
13041 McGregor Boulevard
Fort Myers, Florida 33919-5910
Phone: (239) 481-1331

COORDINATE NO. 8363

BLM REFERENCE NO. T47SR25E340600