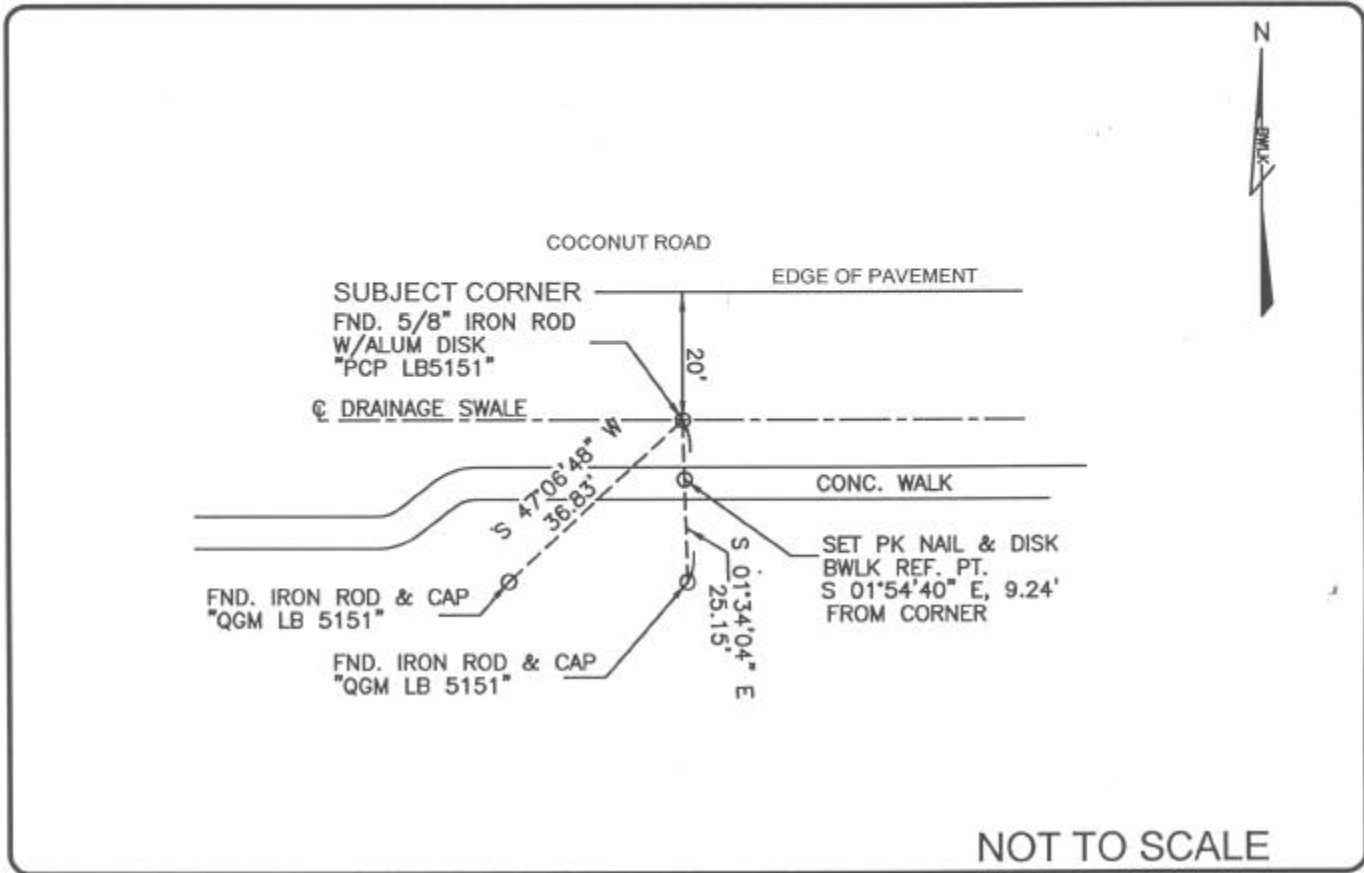


LAND CORNER RECORD

PUBLIC WORKS  
 LEE COUNTY, FLORIDA  
 Address - 1500 Monroe St., Ft. Myers, Fla. 33901 Phone : (239) 479-8900

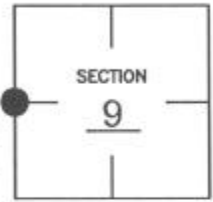


NOT TO SCALE

COMMENTS:  
 Corner appears to have been reset. CCR #19820 calls 4"x4" conc. mon. with brinze disk. CCR #65569 calls 3"x3" conc. mon. with aluminum disk.

CORNER DESCRIPTION

W 1/4 Corner  
 Section 9  
 Township 47  
 Range 25



HORIZONTAL POSITION INFORMATION

Florida West Zone, NAD 1983(1990 Adjustment)  
 Northing(ft) 750352.412 Easting(ft) 714899.384  
 Latitude 26°23'52.4204"N Longitude 81°49'14.0653"W  
 Scale Factor .999945132

EXISTING CERTIFIED CORNER RECORDS

Document No.	Date
<u>19820</u>	<u>10-24-84</u>
<u>65569</u>	<u>11-01-99</u>

The above documents are based on FDEP Bureau of Surveying and Mapping Record Information.

I hereby certify the monument and accessories shown above were field located on 07-06-04

*James R. Coleman*  
 JAMES R. COLEMAN  
 Registered Land Surveyor  
 Florida Certificate No. 3205  
 Date Signed 08-02-04

BEAN, WHITAKER, LUTZ & KAREH, INC. (LB 4919)  
 13041 McGregor Boulevard  
 Fort Myers, Florida 33919-5910  
 Phone: (239) 481-1331

CO-ORDINATE NO. 8346

BLM REFERENCE NO. T47SR25E300540