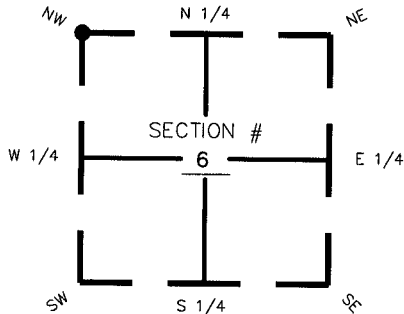


FLORIDA DEPARTMENT OF ENVIRONMENTAL PROTECTION CERTIFIED CORNER RECORD

DOC. # 082970

CORNER DESCRIPTION: MONUMENTATION DESCRIPTION (EVIDENCE FOUND OR METHOD TO SET)

Depict corner with

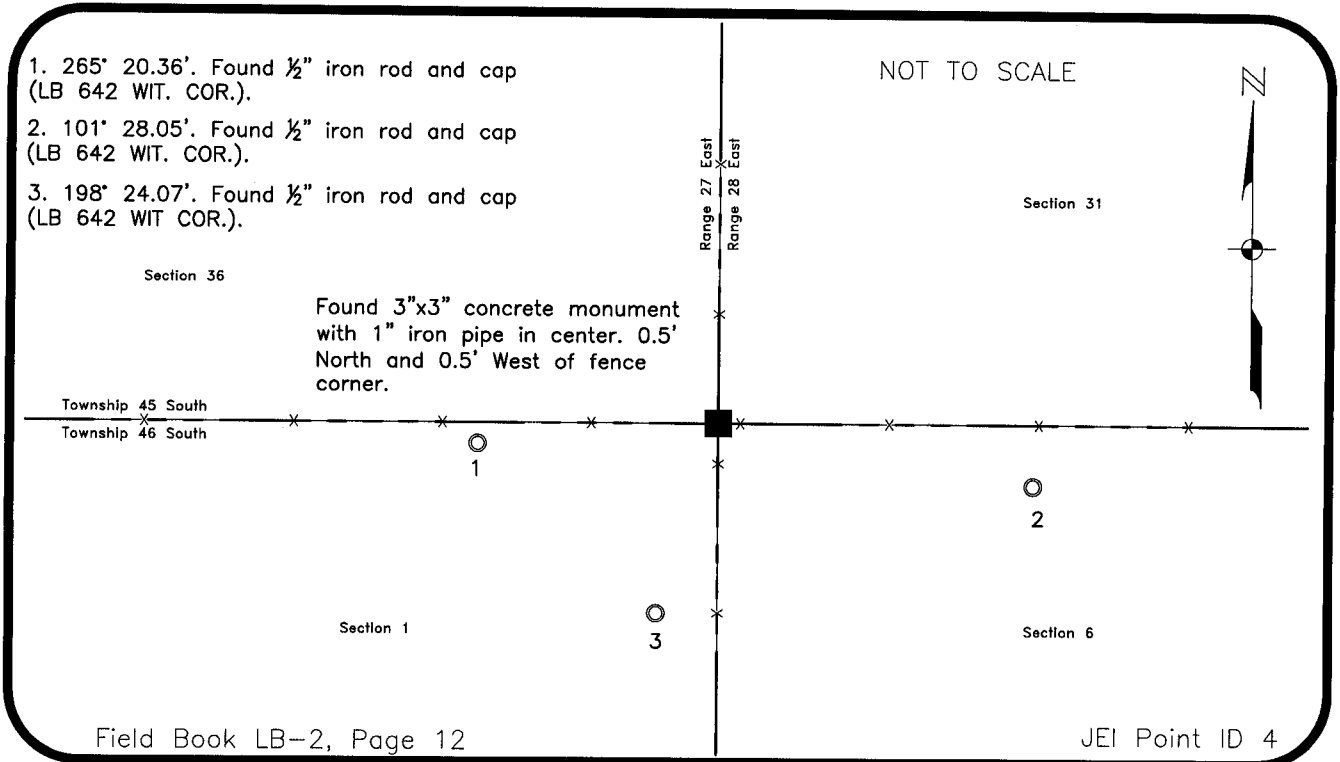


Found 3"x3" concrete monument with 1" iron pipe in center. 0.5' North and 0.5' West of fence corner.

NW corner of Section 6
Twp 46 South, Rge 28 East
Tallahassee Base Meridian,
Collier County(s), Florida

HORIZONTAL POSITION INFORMATION (if determined):

Latitude 26 30 47.62467 N Longitude 81 33 49.74766 W
Y(NORTHING-Ft.) 792638.130 X(EASTING-Ft.) 471790.545 Zone FL83-EF
Convergence -00 15 06.11215 Scale factor 0.99998015
Coordinate determination (circle one): Field traverse GPS
Horizontal datum (circle one): NAD27 NAD83(1986) NAD83(1990) other (explain)
Accuracy (circle one): 1st 2nd 3rd other NAD83(1999)



SURVEYORS CERTIFICATE:

I certify the monument and accessories indicated above were field located on May 21, 2004

[Signature]
SIGNATURE
Johnson Engineering, Inc.
FIRM OR AGENCY
2158 Johnson Street
Fort Myers, FL 33902-1550
P.O. Box 1550
Florida 33902-1550
STATE OF FLORIDA
June 3, 2004
DATE

SEND ORIGINAL TO:
Department of Environmental Protection
Bureau of Surveying and Mapping
3900 Commonwealth Boulevard
Mail Station 105
Tallahassee, Florida 32399

D.E.P. USE ONLY
Processed: 8-2-04
B.L.M. - I.D. 100 700
QUAD - I.D. 2112 Felda

EMBOSSSED SEAL OVER SIGNATURE