

FLORIDA DEPARTMENT OF ENVIRONMENTAL PROTECTION CERTIFIED CORNER RECORD

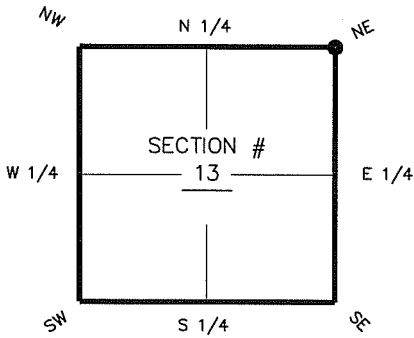
DOC. # _____

J-25

CORNER DESCRIPTION: MONUMENTATION DESCRIPTION (EVIDENCE FOUND OR METHOD TO SET)

Depict corner with ●

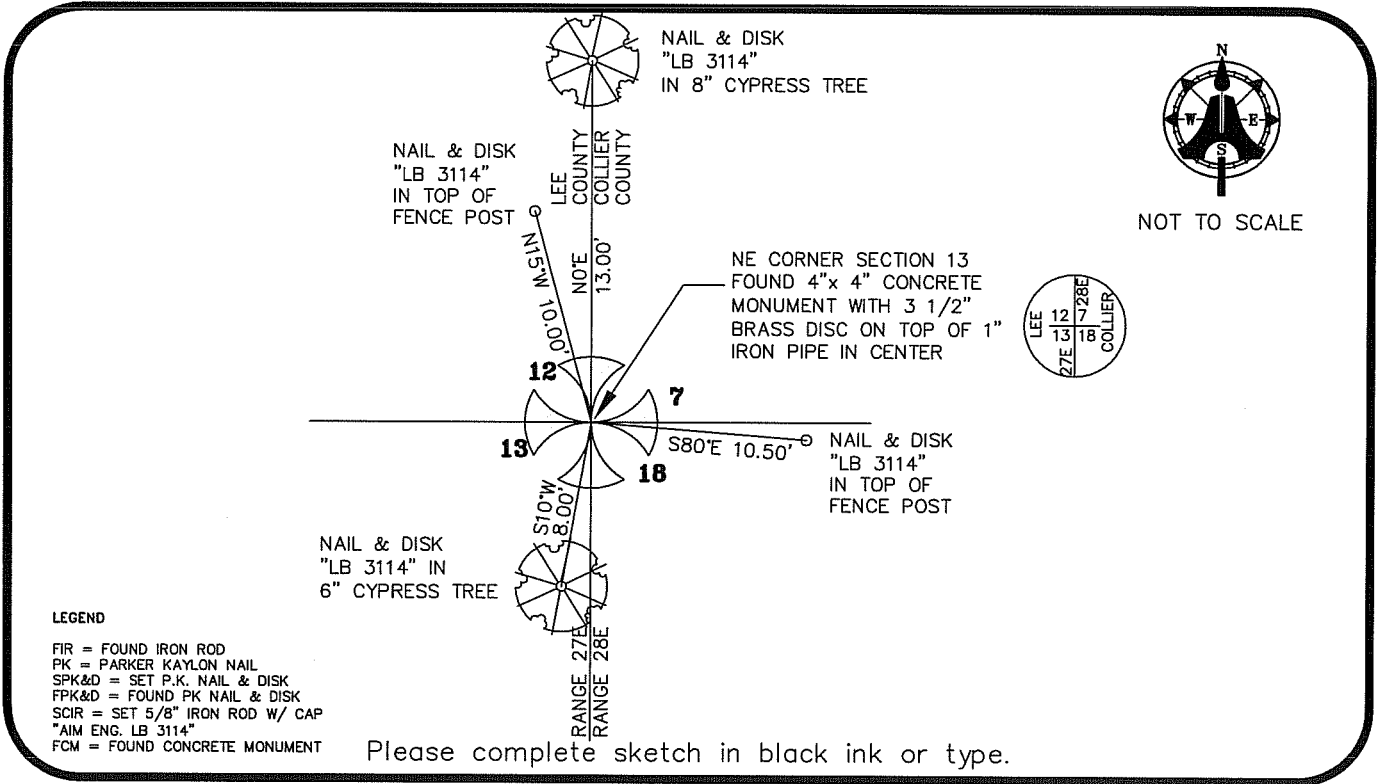
FOUND 4" x 4" CONCRETE MONUMENT WITH 3 1/2" BRASS DISC ON TOP OF 1" IRON PIPE IN CENTER



NE corner of Section 13
Twp 46 S, Rge 27 E
Tallahassee Base Meridian,
LEE County(s), Florida

HORIZONTAL POSITION INFORMATION (if determined):

Latitude 26° 28' 49.9428" N Longitude 81° 34' 47.7352" W
Y(NORTHING-Ft.) 780593.97 X(EASTING-Ft.) 799026.29 Zone FL W
Convergence 00° 11' 41.1" Scale factor 0.99996458
Coordinate determination (circle one): Field traverse GPS
Horizontal datum (circle one): NAD27 NAD83(1986) NAD83(1986) other (explain)
Accuracy (circle one): 1st 2nd 3rd other NAD83(1999)



LEGEND

- FIR = FOUND IRON ROD
- PK = PARKER KAYLON NAIL
- SPK&D = SET P.K. NAIL & DISK
- FPK&D = FOUND PK NAIL & DISK
- SCIR = SET 5/8" IRON ROD W/ CAP
- *AIM ENG. LB 3114*
- FCM = FOUND CONCRETE MONUMENT

Please complete sketch in black ink or type.

SURVEYORS CERTIFICATE:

I certify the monument and accessories indicated above were field located on MARCH 9, 2007

[Signature] 5688
SIGNATURE PSM NO.
AIM ENGINEERING & SURVEYING, INC. LB 3114
FIRM OR AGENCY LB NO.
5300 LEE BOULEVARD
ADDRESS
LEHIGH ACRES, FLORIDA 33971-1026
CITY STATE ZIP
(239) 332-4569 7/12/07
PHONE NUMBER DATE

SEND ORIGINAL TO:
Department of Environmental Protection
Bureau of Surveying and Mapping
3900 Commonwealth Boulevard
Mail Station 105
Tallahassee, Florida 32399

D.E.P. USE ONLY	
Processed:	_____
B.L.M. - I.D.	_____
QUAD - I.D.	_____

EMBOSSSED SEAL OVER SIGNATURE