

FLORIDA DEPARTMENT OF ENVIRONMENTAL PROTECTION CERTIFIED CORNER RECORD

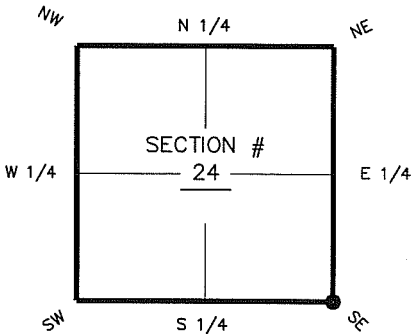
DOC. # _____

R-25

CORNER DESCRIPTION: MONUMENTATION DESCRIPTION (EVIDENCE FOUND OR METHOD TO SET)

Depict corner with

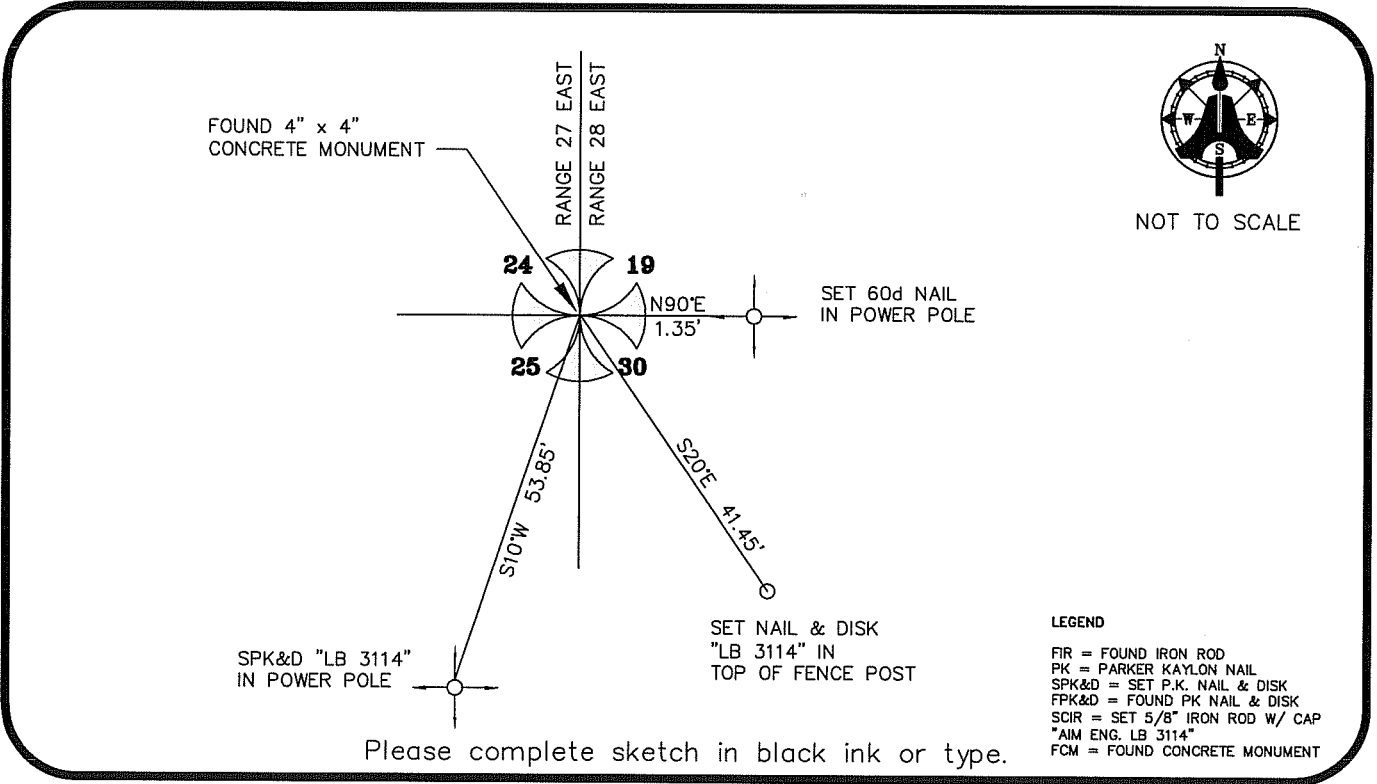
FOUND 4"x 4" CONCRETE MONUMENT



SE corner of Section 24
Twp 46 S, Rge 27 E
Tallahassee Base Meridian,
LEE County(s), Florida

HORIZONTAL POSITION INFORMATION (if determined):

Latitude 26° 27' 04.3618" N Longitude 81° 33' 45.6310" W
Y(NORTHING-Ft.) 769934.29 X(EASTING-Ft.) 799253.74 Zone FL W
Convergence 00° 11' 41.3" Scale factor 0.99996465
Coordinate determination (circle one): Field traverse GPS
Horizontal datum (circle one): NAD27 NAD83(1986) NAD83(1990) other (explain)
Accuracy (circle one): 1st 2nd 3rd other NAD83 (1999)



Please complete sketch in black ink or type.

LEGEND
FIR = FOUND IRON ROD
PK = PARKER KAYLON NAIL
SPK&D = SET P.K. NAIL & DISK
FPK&D = FOUND PK NAIL & DISK
SCIR = SET 5/8" IRON ROD W/ CAP
"AIM ENG. LB 3114"
FCM = FOUND CONCRETE MONUMENT

SURVEYORS CERTIFICATE:

I certify the monument and accessories indicated above were field located on FEBRAURY 2, 2007

SIGNATURE 5688 PSM NO.
AIM ENGINEERING & SURVEYING, INC. LB 3114
FIRM OR AGENCY LB NO.
5300 LEE BOULEVARD

SEND ORIGINAL TO:
Department of Environmental Protection
Bureau of Surveying and Mapping
3900 Commonwealth Boulevard
Mail Station 105
Tallahassee, Florida 32399

LEHIGH ACRES, FLORIDA 33971-1026
CITY STATE ZIP
(239) 332-4569 7/12/07
PHONE NUMBER DATE

D.E.P. USE ONLY	
Processed: _____	
B.L.M. - I.D. _____	
QUAD - I.D. _____	

EMBOSSSED SEAL OVER SIGNATURE